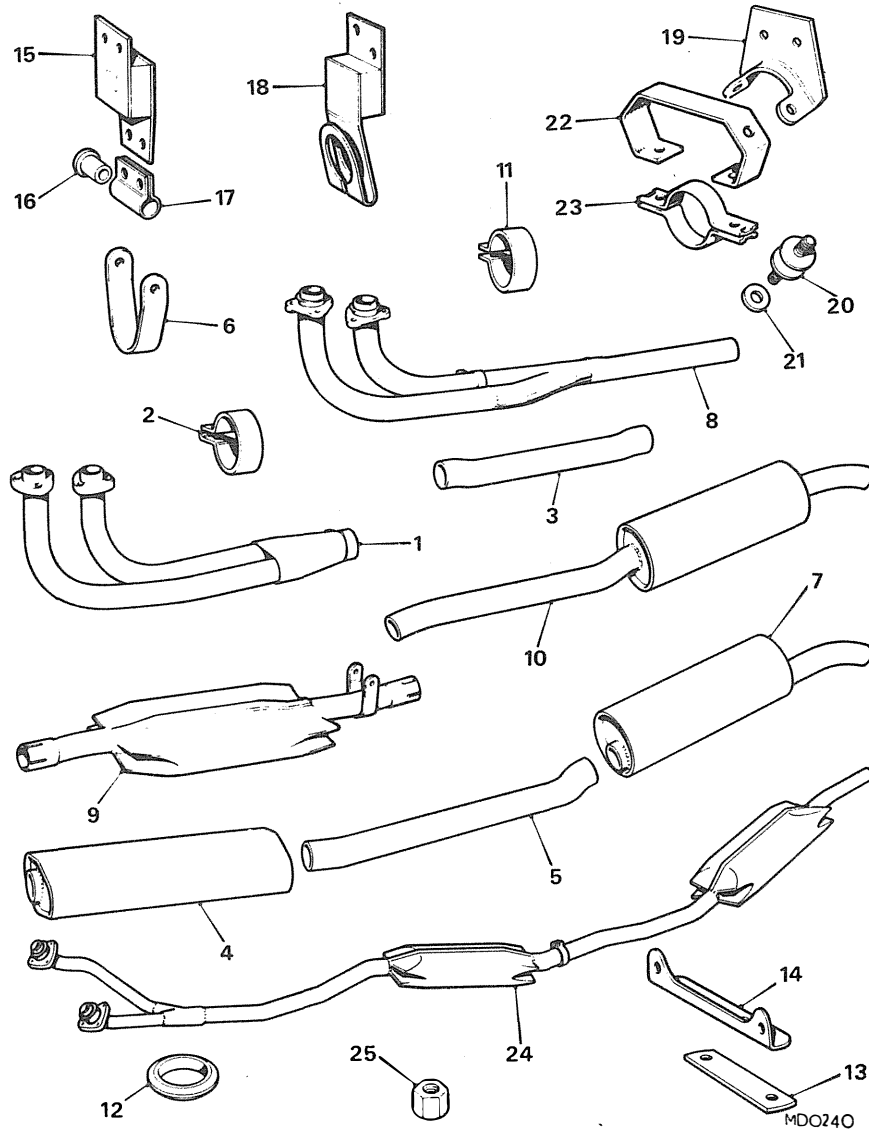


Ill. No.	Part No.	DESCRIPTION	Qty.	Change Point	REMARKS
EXHAUST SYSTEM					
1	GEX 3263	PIPE ASSEMBLY-FRONT(WITH JUNCTION).....	1	Use prior to GEX 162 and NRP 1093	Except N.America AND V8.
2	GEX 7074	Clip-pipe-front.....	1		
3	GEX 1316	Pipe-intermediate-front.....	1		
4	GEX 3393	Silencer-front.....	1		
5	GEX 1321	Pipe-intermediate-rear.....	1		
6	GEX 7191	Bracket-mounting-rear.....	1		
7	GEX 3429	Silencer and tail pipe-rear.....	1		
	GEX 162	Exhaust system complete.....	1	(C)G-HN5-360301 ON (C)G-HD5-361001 ON	Except N.America Sweden and V8 Except N.America and Switzerland Switzerland only
	NRP 1093	Exhaust system complete.....	1		
8	ARH 281	Pipe-front \$(C\$).....	1	Use prior to NRP 1057	N.America and Sweden.
9	GEX 3393	Silencer-front \$(C\$).....	1		
10	ARH 301	Silencer and tail pipe-rear \$(C\$).....	1		
	NRP 1057	Exhaust system complete \$(C\$).....	1	(C)G-HN5-360301 TO 367719 (approx) (C)G-HD5-361001 TO 367805 (approx)	Twin Carburetter. N.America
	NRP 1015	Exhaust system complete \$(C\$).....	1	(C)G-HN5-367720 ON	Single carburetter Leaded fuel N.America.
	NRP 1069	Exhaust system complete \$(C\$).....	1	(C)G-HN5-382130 ON	Single carburetter Unleaded fuel N.America. V8
24	GEX 138	Exhaust system complete.....	1	(C)G-D2D1-101 TO 2100 (C)G-D2D1-2101 ON	
24	GEX 158	Exhaust system complete.....	1		
11	GEX 7075	Clip.....	2		
	BH 605101	Bolt.....	2		
	LWZ 305	Washer-spring.....	2		
	NH 605041	Nut.....	2		
12	GEX 7193	Joint-pipe to manifold(C\$).....	2		Twin Carburetter. Was GEX 7352
	GEX 7470	Olive-flange to manifold or catalyst(C\$).....	1		
	WL 600051	Washer-spring.....	6		Single carburetter
25	AHH 8382	Nut.....	6		Twin carburetter.
25	LNZ 205	Stiffnut.....	3		Single carburetter
13	GEX 7194	Strap-mounting-front.....	1		Twin Carburetter.
	BHH 1616	Strap-mounting front.....	1		Single Carburetter
14	GEX 7189	Bracket-mounting-front.....	1	(C)G-HN3,G-HD3-101 TO 138400 (C)G-HN4,G-HD4-138401 ON (C)G-D2D1-101-ON	
14	GEX 7190	Bracket-mounting-front.....	1		

NOTE:-(C\$) These parts comply with Californian state regulations when fitted on vehicles to which this list applies.

\$ This item is subject to safety regulations.



Ill. No.	Part No.	DESCRIPTION	Qty.	Change Point	REMARKS
EXHAUST SYSTEM-continued					
	SH 605061	Screw	1		
	WA 108051	Washer-plain	1		
	WL 600051	Washer-spring	1		
	NH 605041	Nut	1		
	HZS 508	Bolt	1		
	WL 600051	Washer-spring	1		
	NH 605041	Nut	1		
15	GEX 7204	Mounting-intermediate pipe-rear	1		
16	GEX 7182	Bush	2		
17	GEX 7183	Housing	1		
	BH 605221	Bolt	1		
	WL 600051	Washer-spring	1		
	NH 605041	Nut	1		
	SH 604041	Screw	2		
	LWZ 204	Washer-spring	2		
	SH 604041	Screw	2		
	WL 600041	Washer	2		
	NH 604041	Nut	2		
18	GEX 7275	Mounting-pipe-rear	1		
	BH 604221	Bolt	1		
	WA 106041	Washer-plain	2		(C)G-HN4,G-HD4-138401 TO 167815
	WL 600041	Washer-spring	1		
	NH 604041	Nut	1		
19	GEX 7201	Bracket mounting rear	1		
	GEX 7442	Bracket mounting-rear	1		Use prior to GEX 7442 (C)G-HN5-360301 ON (C)G-HD5-361001 ON (C)G-D2D1-2101 ON (C)G-HN4-167816 TO 187210 (C)G-HN5-187211 ON (C)G-HD4-167816 TO 187840 (C)G-HD5-187841 ON (C)G-D2D1-101 ON
20	GEX 7251	Mounting(rubber) \$	2		
21	AHC 442	Washer-heat insulating	4		
	PWZ 205	Washer-plain	6		
	WL 600051	Washer-spring	6		
	NH 605041	Nut	6		
22	GEX 7202	Bracket-hanger	2		
	HZS 509	Screw	2		
23	GEX 7252	Clip-saddle rear mounting	2		
23	BHH 200	Clip-saddle-rear mounting	2		Use prior to GEX 7203 USA Types-Twin Carburetters
23	GEX 7203	Clip-saddle-rear mounting	2		Except USA types and V8. Not V8.
	SH 604041	Screw	2		
	WL 600041	Washer-spring	2		

\$ This item is subject to safety regulations.