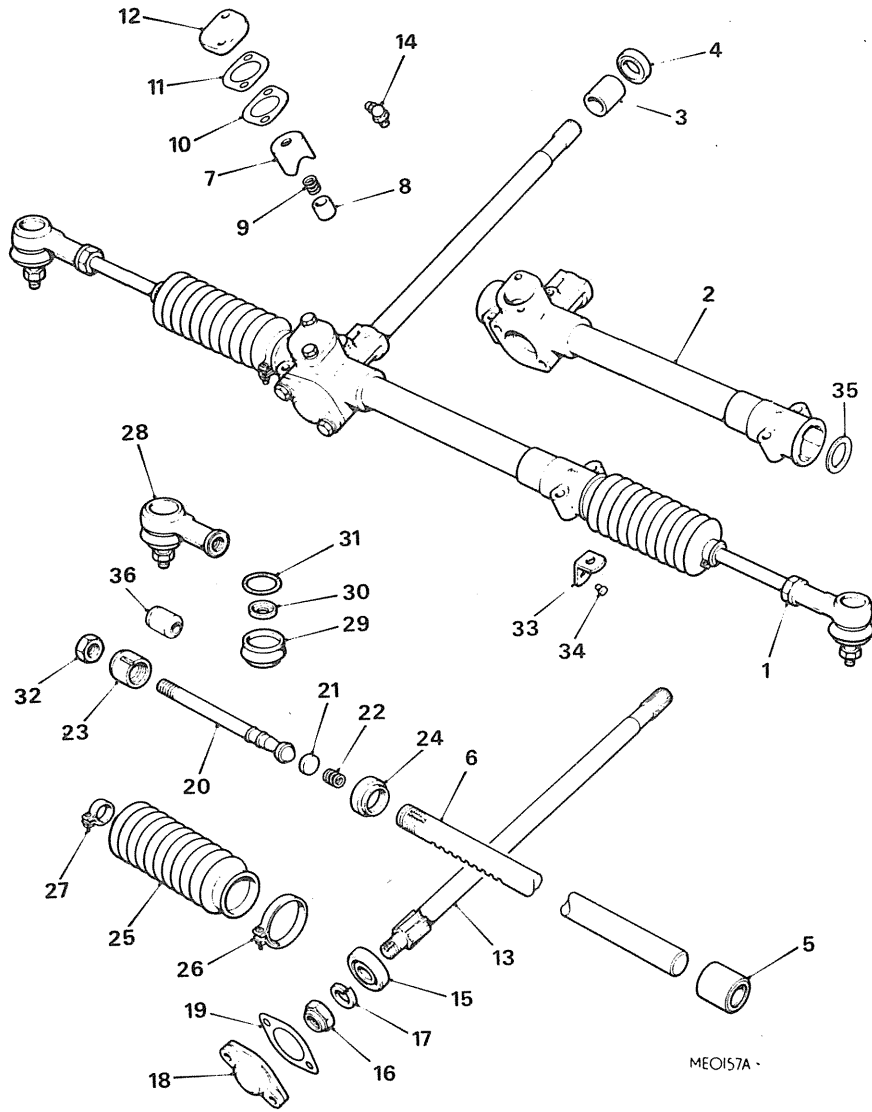


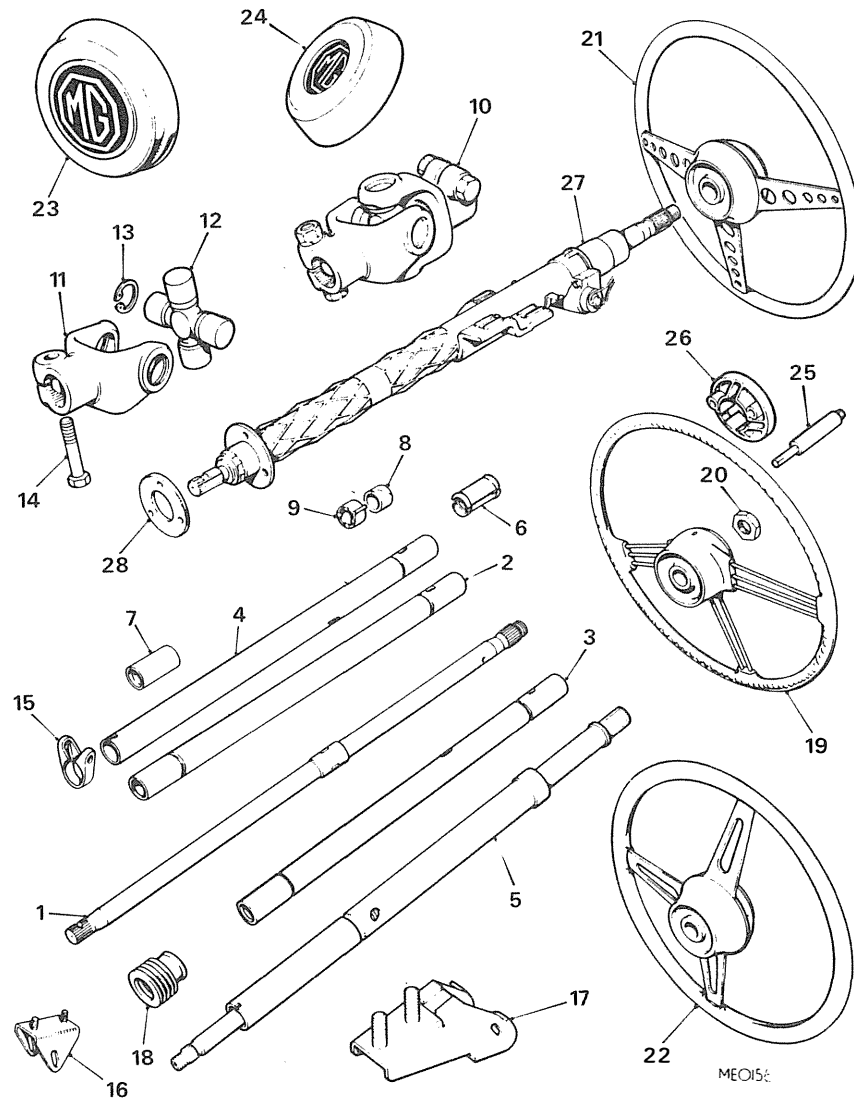
Ill. No.	Part No.	DESCRIPTION	Qty.	Change Point	REMARKS
----------	----------	-------------	------	--------------	---------

STEERING RACK.

RACK ASSEMBLY-STEERING					
1	AHH 6091	RHD \$	1	Use prior to BHH 1597] Not V8.
	AHH 6121	LHD \$	1		
1	BHH 868	RHD \$	1	Use prior to BHH 1598] V8.
1	BHH 1597	RHD \$	1	Use prior to BHH 1597	
	BHH 1598	LHD \$	1	(C)G-HN5-360301 TO 410000.] (C)G-HD5-361001 TO 410000. (C)G-D2D1-2101 TO 2903.
2	17H 6588	HOUSING ASSEMBLY-RHD \$	1		
	17H 6589	HOUSING ASSEMBLY-LHD \$	1		
3	17H 6579	Bush-pinion \$	1		
4	17H 6560	Seal-oil \$	1		
5	17H 8664	Bearing-racket-support end \$	1		
	PTZ 603	Screw	1		
35	17H 8711	Disc-backing	1] V8.
6	17H 6570	Rack \$	1		
7	17H 6582	Yoke-rack support \$	1		
8	ACA 5244	Pad-damper \$	1		
9	17H 6583	Spring-pad \$	1		
SHIM COVER PLATE					
10	17H 6566	.0609mm(.0024")\$	A/R		
10	17H 6567	.127mm(.005")\$	A/R		
10	17H 6568	.254mm(.010")\$	A/R		
11	17H 6584	Gasket-cover plate \$	1		
12	17H 6580	Plate-yoke cover \$	1		
	ZCS 507	Bolt	2		
	WL 600051	Washer-spring	2		
PINION					
13	17H 6575	RHD	1] Use prior to 37H 8769 RHD] Not V8.
	17H 6612	LHD \$	1		
13	37H 8042	RHD \$	1	37H 8770 LHD] V8.
13	37H 8769	RHD \$	1	(C)G-HN5-360301 TO 410000.	
	37H 8770	LHD \$	1	(C)G-HD5-361001 TO 410000.] (C)G-D2D1-2101 TO 2903.
14	UHN 205	Lubricator-pinion shaft-RHD	1		
	UHN 305	Lubricator-pinion shaft-LHD	1		
15	6K 803	Bearing-pinion \$	1		
16	17H 6562	Nut-bearing retaining \$	1		
17	27H 5915	Washer-plain	1		
18	17H 6563	Cover-end \$	NLA		
19	17H 6564	Gasket-end cover \$	1		
	WL 600051	Washer-spring	2		

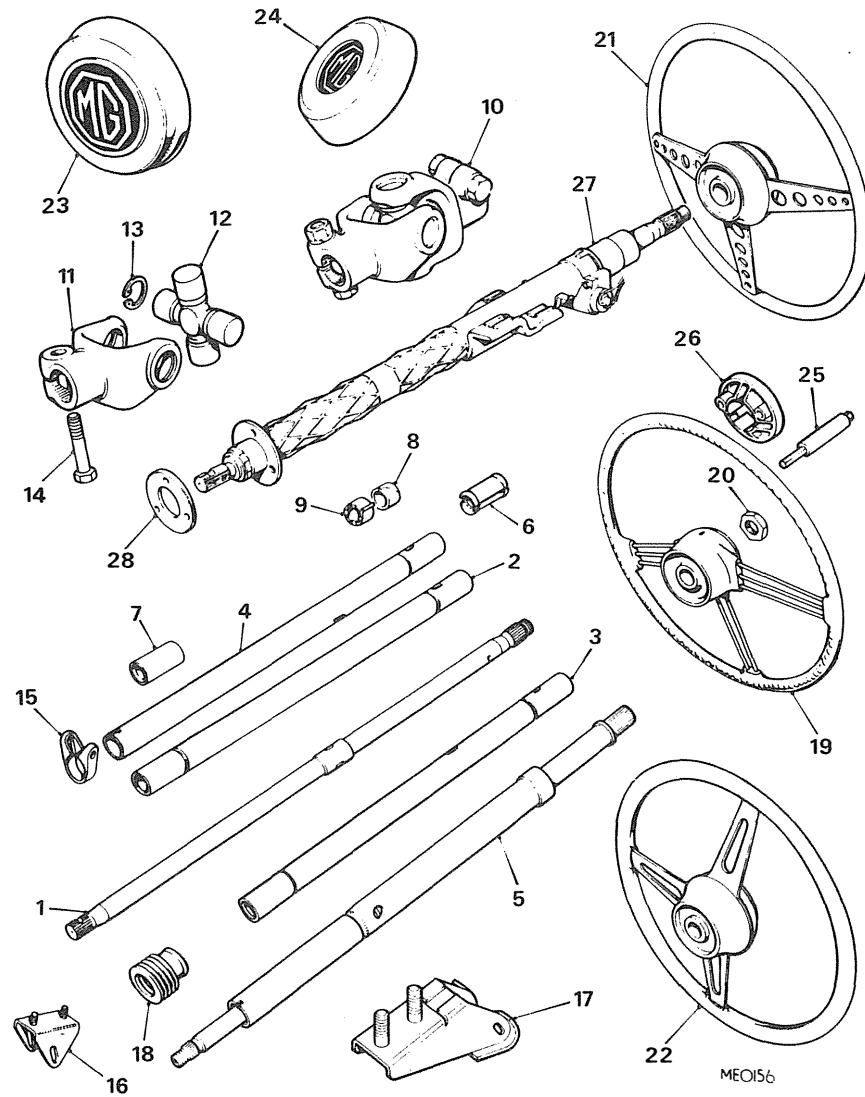


III. No.	Part No.	DESCRIPTION	Qty.	Change Point	REMARKS
STEERING RACK-continued					
20	17H 8713	Tie-rod \$	2		
21	17H 6571	Seat-ball \$	2		
22	CCA 13	Spring-thrust-ball seat \$	2		
23	17H 6573	Housing-ball \$	2		
24	17H 6574	Locknut-ball housing \$	2		
25	17H 6569	Seal-rack \$	2		
26	ADG 1682	Clip-seal-inner \$	2		
27	3H 2963	Clip-seal-outer \$	2		
27	37H 8044	Clip-seal-outer \$	1		Not V8
36	37H 8045	Cap-end \$	1		V8
28	18G 8043	SOCKET ASSEMBLY-BALL \$	2		
29	17H 3501	Boot \$	2		Alternatives
29	27H 6320	Boot \$	2		
30	17H 3502	Retainer-boot \$	2		
31	17H 3503	Spring-garter \$	2		Alternatives
31	17H 9170	Spring-garter \$	2		
	LNZ 207	Nut	2		
32	53K 320	Locknut	2		
33	AHH 6007	Shim-rack to bracket \$	A/R		
34	DAP 829	Rivet-shim	A/R		
	HBZ 516	Bolt	4		
	LNZ 205	Nut	2		
	WL 600051	Washer-spring	2		



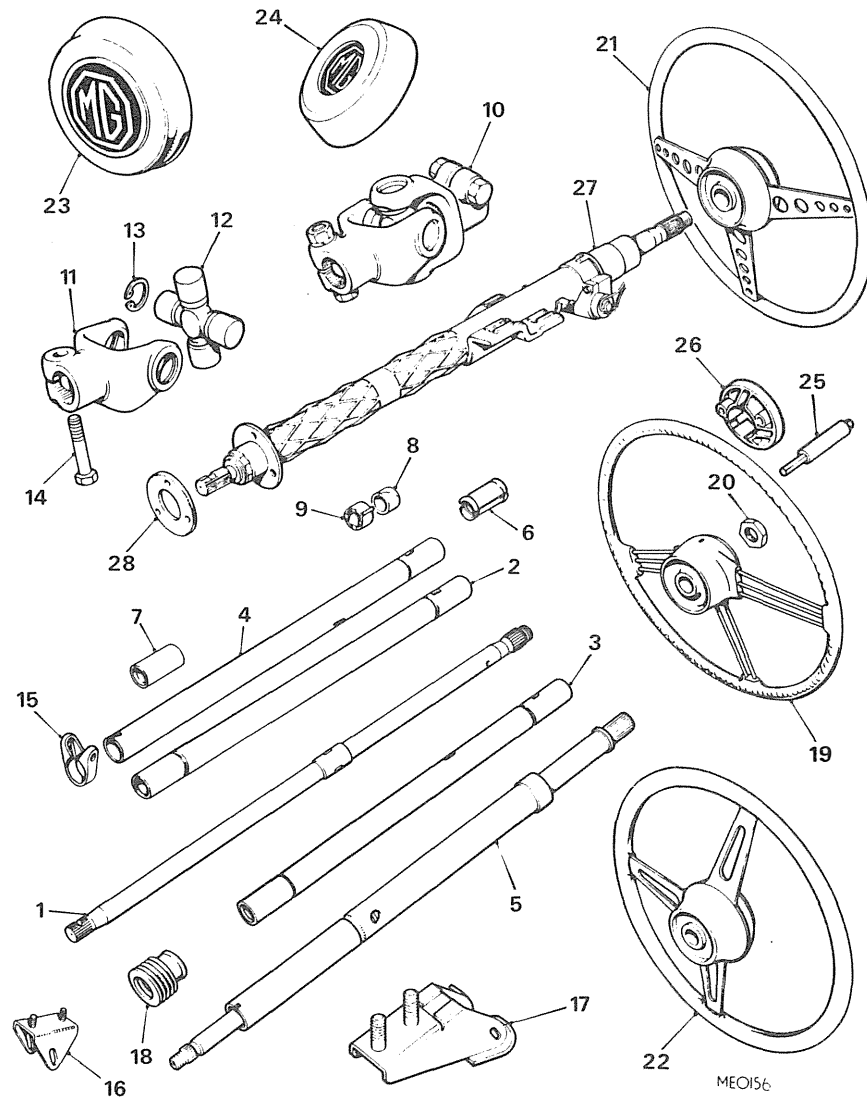
Ill. No.	Part No.	DESCRIPTION	Qty.	Change Point	REMARKS
STEERING COLUMN-NOT N.AMERICA OR V8.					
1	17H 6577	Column-inner	1	Use prior to column and tubes 37H 4763 TO 37H 4768] Use when steering LOCK IS FITTED.
1	7H 6972	Column-inner-RHD	1		
1	7H 6971	Column-inner-LHD	1		
2	17H 6578	Tube-outer	1		
3	7H 6969	Tube-outer-RHD	1		
4	7H 6970	Tube-outer-LHD	1		
1	37H 4768	Column-inner \$	1	(C)G-HN5-187211 TO 258000] Use when steering lock is fitted.
1	37H 4767	Column-inner \$	1		
2	37H 4763	Tube-outer	1	(C)G-HD5-187841 TO 258000] Use when steering lock is fitted.
3	37H 4765	Tube-outer-RHD	1		
4	37H 4764	Tube-outer-LHD	1	(C)G-HN5.G-HD5 258001 TO 360300 (Tourer)361000 (GT)] Use when steering lock is fitted.
5	BHH 515	Column-steering(complete only)\$	1		
	BHH 1596	Column-steering(complete only) \$	1	(C)G-HN5-360301 TO 410000. (C)G-HD5-361001 TO 410000.] Not used with STEERING COLUMN BHH 515. BHH 1596
6	31G 120	Bearing-upper.....	1		
7	17H 6565	Bearing-lower	1		
8	13H 569	Bush(felt).....	1		
9	13H 568	Clip-bush.....	1		
10	AHH 6000	JOINT ASSEMBLY-UNIVERSAL \$	1		
11	17H 3925	Yoke \$.....	2		
12	17H 3873	JOURNAL ASSEMBLY \$	1		
13	CCN 212	Circlip \$.....	4		
14	17H 3839	Bolt	4		
	FNZ 105	Nut	2		
	LWZ 205	Washer-spring	2		
10	575732	Joint-universal \$	1		
14	BHH 1791	Pinch bolt-universal joint.....	2		
	LNZ 105	Nut-Nyloc.....	2		
15	AHH 6005	Clamp-column	2		
	HBZ 518	Bolt.....	2		
	FNZ 105	Nut.....	4		
	PWZ 105	Washer-plain.....	2		
	WL 600051	Washer-spring	2		

\$ This item is subject to safety regulations.



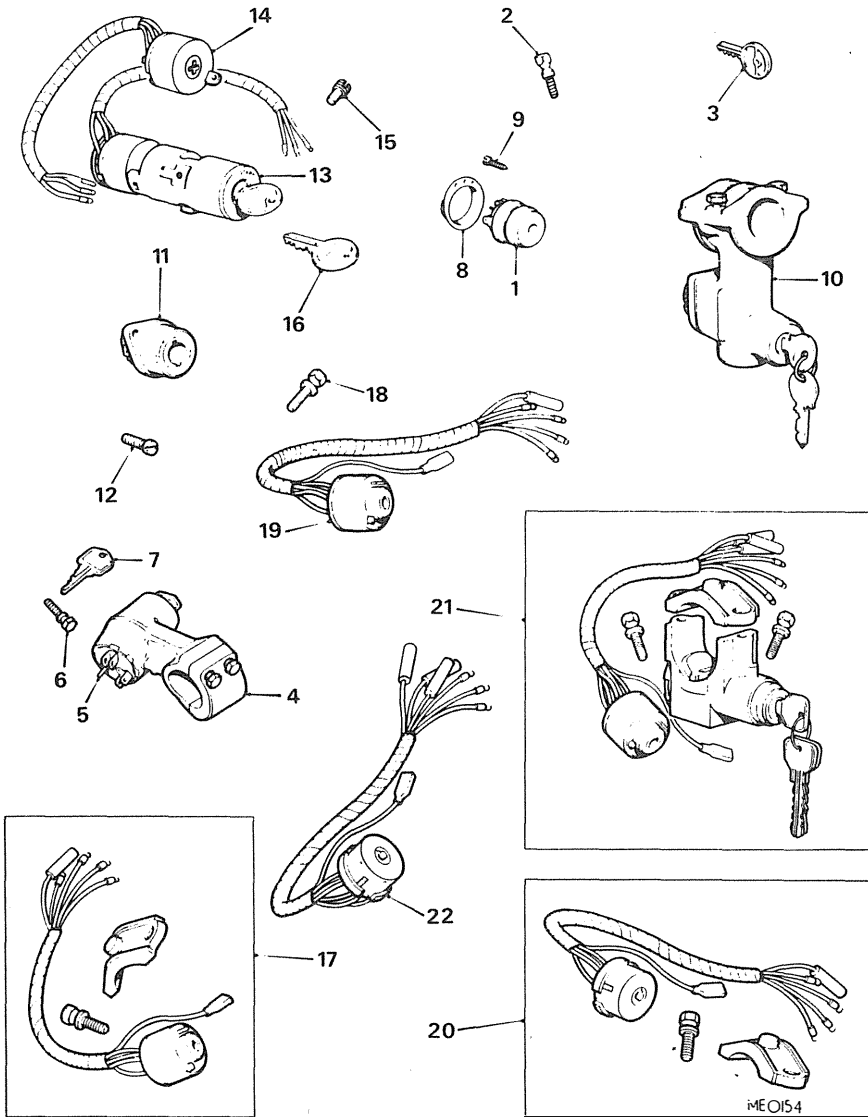
III. No.	Part No.	DESCRIPTION	Qty.	Change Point	REMARKS
STEERING COLUMN-NOT N.AMERICA OR V8-continued.					
16	AHH 6311	Bracket-column lower	NLA		
17	BHH 516	Bracket-column lower	1		Use prior to BHH 516 (C)G-HN5,G-HD5-258001 TO 360300 (Tourer)361000 (GT)
	FNZ 105	Nut	2		
	WL 600051	Washer-spring	2		
18	AHA 5435	Seal-column to bulkhead	1		Use prior to BHH 531 (C)G-HN5,G-HD5-258001 TO 360300 (Tourer)361000 (GT)
18	BHH 531	Tube-sealing	1		
	HZS 610	Screw-steering column bracket to body	3		
	WL 600061	Washer-spring	3		
	PWZ 206	Washer-plain	3		
	SH 605061	Screw-steering column to cup box front-top and bottom	3		(C)G-HN5-360301 ON (C)G-HD5-361001 ON
	WL 600051	Washer-spring	3		
	WA 108051	Washer-plain	3		
19	AHH 9284	Wheel-steering	1		Use prior to BHH 291 and BHH 119 (C)G-HN5-187211 TO 294250 (C)G-HD5-187841 TO 296000 (C)G-HN5-294251 TO 320196 (C)G-HD5-296001 TO 320196
20	ACH 6001	Nut-wheel	1		
21	BHH 291	Wheel-steering	1		
22	BHH 786	Wheel-steering \$	1		
	BHH 1307	Wheel-steering	1		
	BHH 1813	Wheel-steering-Black spokes	1		(C)G-HN5-320197 ON (C)G-HD5-320197 ON
20	BHH 119	Nut-steering wheel	1		(C)G-HN5-187211 ON (C)G-HD5-187841 ON
23	AHH 8682	Motif	1		Use prior to BHA 4979 (C)G-HN5-187211 TO 219000 (C)G-HD5-187841 TO 219000
	57H 5423	Clip	1		
23	BHA 4979	Motif	1		(C)G-HD5,G-HN5-219001 TO 258000 (C)G-HD5,G-HN5-258001 TO 369258 (Tourer)and 369696(GT)
24	BHA 5043	Horn-push	1		
24	BHA 5135	Horn-push	1		(C)G-HN5-369259 ON (C)G-HD5-369697 ON
24	AAU 1161	Horn push	1		(C)G-HD5,G-HN5-219001 ON
25	BHA 5041	Brush	1		
26	BHA 5042	Slip-ring	1		

\$ This item is subject to safety regulations.



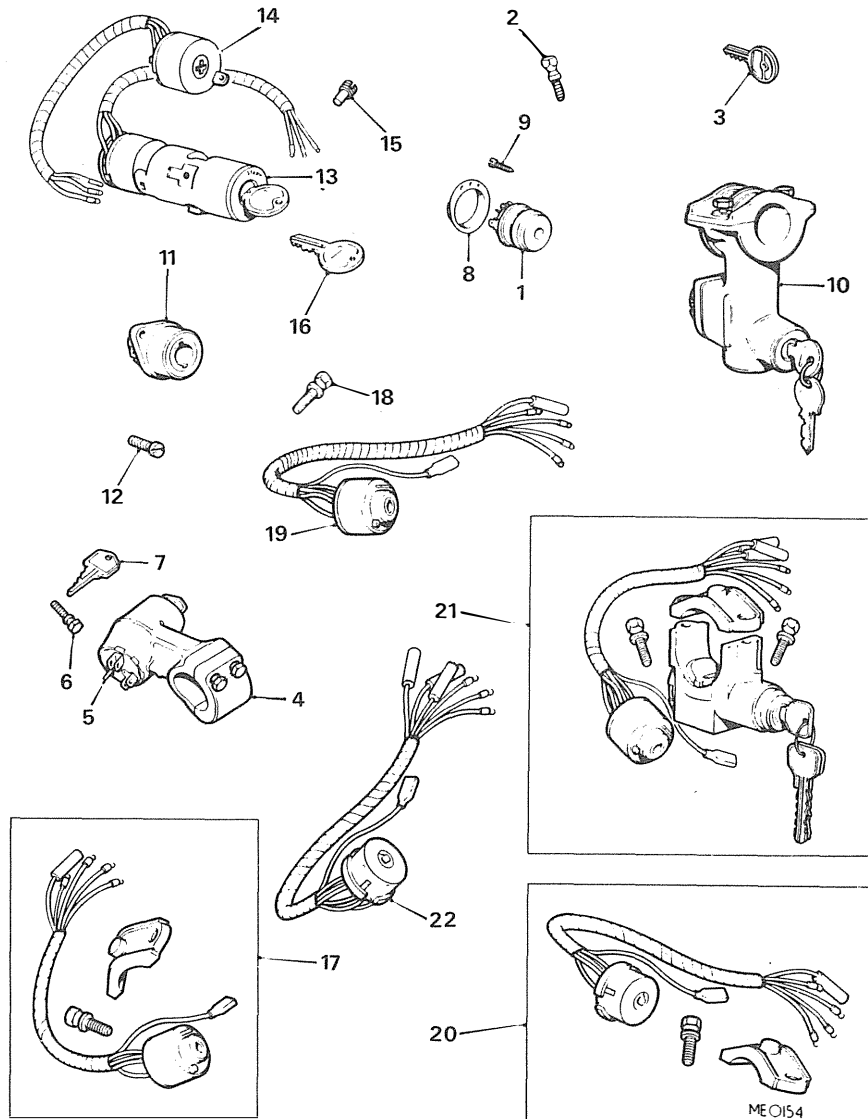
Ill. No.	Part No.	DESCRIPTION	Qty.	Change Point	REMARKS
STEERING COLUMN-COLLAPSIBLE TYPE-N.AMERICA.					
27	AHH 8505	Column-steering-complete.....	1		Use prior to AHH 9957
27	AHH 9957	Column-steering-complete.....	1		(C)G-HN5-187211 TO 360300
					(C)G-HD5-187841 TO 361000
27	BHH 1596	Column-steering-complete.....	1		(C)G-HN5-360301 ON (C)G-HD5-361001 TO 367803
	HZS 510	Screw.....	3		
	LWZ 206	Washer-spring.....	6		
	PWZ 206	Washer-plain.....	6		
	HZS 506	Screw.....	3		
	PWZ 106	Washer-plain.....	3		
	LWZ 206	Washer-spring.....	3		
28	AHA 8720	Seal-column to toe panel.....	1		
10	AHH 6000	JOINT ASSEMBLY-UNIVERSAL \$.....	1		
11	17H 3925	Yoke.....	2		Use prior to 90 575732
12	17H 3873	JOURNAL ASSEMBLY.....	1		
13	CCN 212	Circlip.....	4		
14	17H 3839	Bolt.....	2		
	FNZ 105	Nut.....	2		
	WL 600051	Washer-spring.....	2		
	575732	Joint-universal.....	1		(C)G-HN5-360301 ON (C)G-HD5-361001 TO 367803
	BHH 1791	Pinch bolt.....	2		
	LNZ 105	Nut-Nyloc.....	2		
19	AHH 9285	Wheel-steering \$.....	NLA		Use prior to BHH 291 and BHH 119
20	AHH 8561	Nut-steering wheel \$.....	1		
21	BHH 291	Wheel-steering.....	1		(C)G-HN5-187211 TO 294250 (C)G-HD5-187841 TO 296000
22	BHH 786	Wheel-steering \$.....	1		(C)G-HN5-294251 TO 320196 (C)G-HD5-296001 TO 320196
	BHH 1307	Wheel-steering \$.....	1		(C)G-HN5-320197 ON (C)G-HD5-320197 ON
20	BHH 119	Nut-steering wheel.....	1		(C)G-HN5-187211 ON (C)G-HD5-187841 ON
23	AHH 8682	Motif.....	1		Use prior to BHA 4979
	57H 5423	Clip.....	1		
23	BHA 4979	Motif.....	1		(C)G-HN5-187211 TO 219000 (C)G-HD5-187841 TO 219000
24	BHA 5043	Horn push.....	1		(C)G-HN5,G-HD5-219001 TO 258000 (C)G-HN5,G-HD5-258001 TO 369258 (Tourer)and 369696(GT)
24	BHA 5135	Horn push.....	1		(C)G-HN5-369259 ON (C)G-HD5-369697 ON
24	AAU 1161	Horn push.....	1		(C)G-HN5,G-HD5-219001 ON
25	BHA 5041	Brush.....	1		
26	BHA 5042	Slip-ring.....	1		

\$ This item is subject to safety regulations.

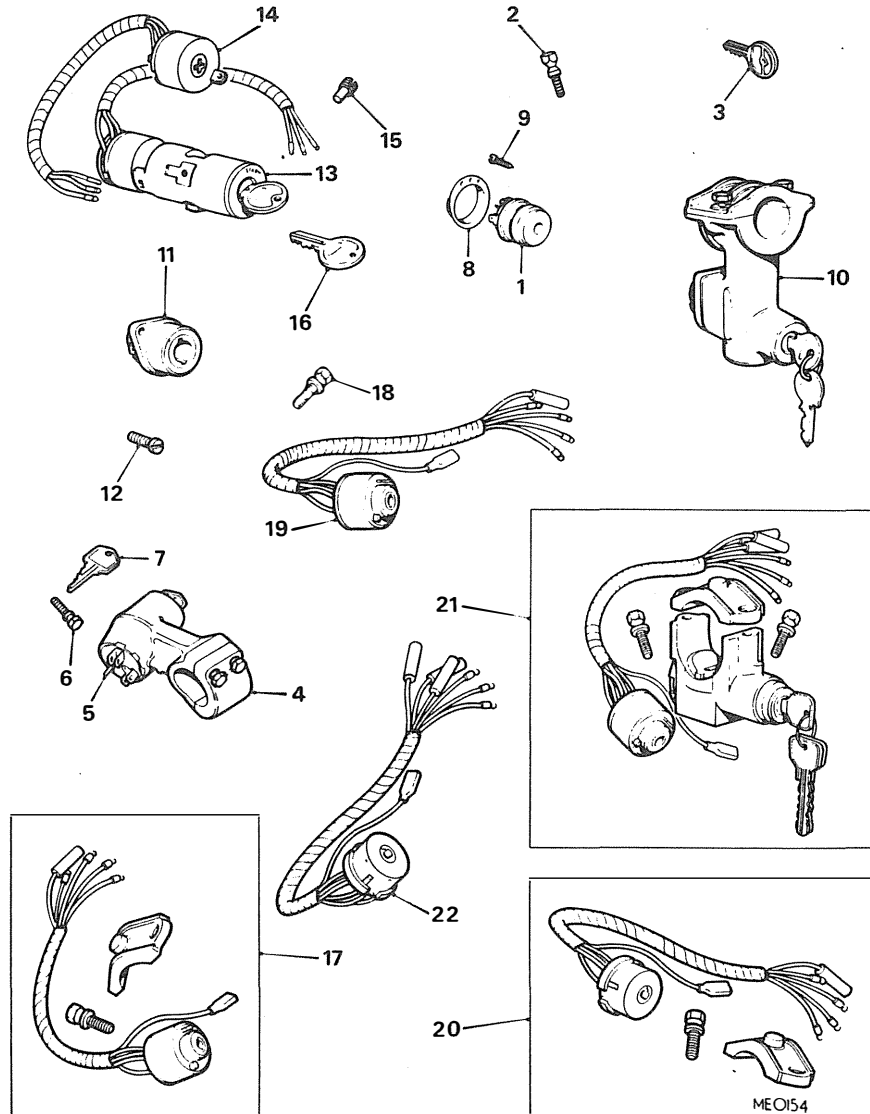


Ill. No.	Part No.	DESCRIPTION	Qty.	Change Point	REMARKS
STEERING LOCKS-NOT USA,CANADA,SWEDEN,USA FOR GERMANY OR V8.					
	13H 4180	LOCK ASSEMBLY-STEERING(WITH IGNITION SWITCH)\$	NLA	(C)G-HN3,G-HD3-101 TO 138400	Use BMK 2259.
1	27H 6237	Switch \$	1	(C)G-HN4,G-HD4-138401 TO 152454	
2	27H 9394 13H 4862	Bolt-shear \$	2	(C)G-HN4,G-HD4-152455 TO 187210	
	10 BHA 5709	LOCK ASSEMBLY-STEERING	NLA	(Tourer)187840(GT) 187211 TO 230616 (C)G-HN5-187841 TO 231338	Use BMK 2259.
10	BHA 5215	LOCK ASSEMBLY-STEERING	NLA	(C)G-HN5-230617 TO 275645	
11	37H 7708	Switch	1	(C)G-HN5,G-HD5-275646 TO 360300	Use BMK 2259.
2	51K 4001	Bolt-shear	2	(Tourer)and 361000(GT)	
10	BMK 2259	LOCK ASSEMBLY-STEERING	1		
11	37H 5934	Switch-ignition and lock	1	Use prior to BHM 7056	BMK 2259 is a SERVICE REPLACEMENT TO SUIT ALL TYPES USED BY production
12	37H 6967	Screw	1		
2	37H 5935	Bolt-shear	2		
10	BHM 7056	LOCK ASSEMBLY-STEERING \$	1		
	BHA 5398	Switch-ignition and lock	1	(C)G-HD5-361001 TO 410000.	
	51K 4001	Bolt-shear	2		

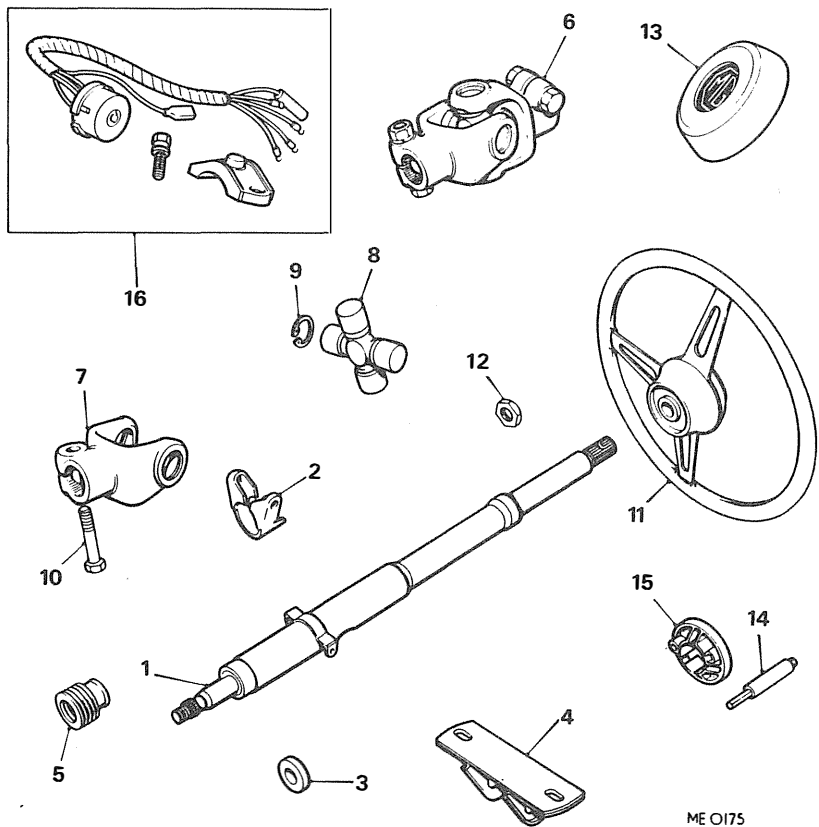
\$ This item is subject to safety regulations.



Ill. No.	Part No.	DESCRIPTION	Qty.	Change Point	REMARKS
STEERING LOCKS-USA,CANADA,SWEDEN AND USA FOR GERMANY.NOT V8.					
13H 4180		LOCK ASSEMBLY-STEERING(WITH IGNITION SWITCH)\$	NLA	(C)G-HN3,G-HD3-101 TO 138400	Use BMK 2259.
1	27H 6237	Switch \$	1	(C)G-HN4,G-HD4-138401 TO 152454	
2	27H 9394	Bolt-shear \$	2	(C)G-HN4,G-HD4-152455 TO 187210	Use BMK 2259.
13H 4862		LOCK ASSEMBLY-STEERING(WITH IGNITION SWITCH)\$	NLA	(Tourer)187840(GT)	
1	27H 6237	Switch \$	1	(C)G-HN5-187211 TO 230616	Use BMK 2259.
2	27H 9394	Bolt-shear \$	2	(C)G-HD5-187841 TO 231338	
8	27H 6236	Cap-switch	1	(C)G-HN4,G-HD4-138401 TO 187210	Use BMK 2259.
9	27H 6238	Screw	2	(Tourer)187840(GT)	
13	BHA 4715	LOCK ASSEMBLY-STEERING(WITH IGNITION SWITCH)\$	1	(C)G-HN5-187211 TO 258000	Alternatives to 18G 8905.
14	37H 4114	Switch \$	NLA	(C)G-HD5-187841 TO 258000	
15	37H 4113	Screw-switch retaining \$	1	(C)G-HN5-258001 TO 294250	Alternatives to 18G 8905.
13	BHA 5050	LOCK ASSEMBLY-STEERING \$	1	(C)G-HD5-258001 TO 296000	
14	BHA 5056	Switch-ignition \$	1		
17	18G 8906	KIT-STEERING LOCK \$	1		Alternatives to 18G 8905.
18	51K 4001	Bolt-shear \$	2		

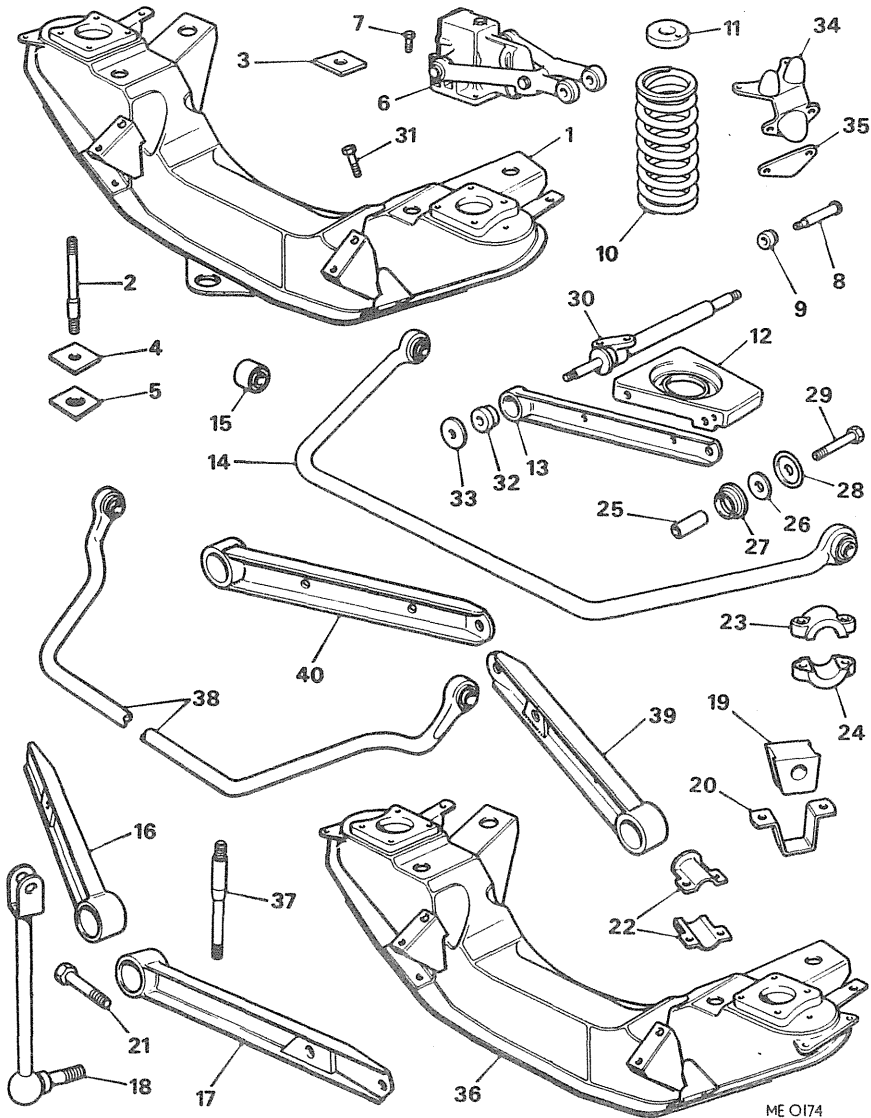


Ill. No.	Part No.		DESCRIPTION	Qty.	Change Point	REMARKS
STEERING LOCK-USA,CANADA,SWEDEN AND USA FOR GERMANY.NOT V8-continued.						
	18G 8901		KIT-STEERING LOCK \$.....	NLA	(C)G-HN5-187211	Use 18G 8905, alternatives to BHA 5050 and 18G 8906.
19	BHA 5070		Switch	1	TO 258000	
18	51K 4001		Bolt-shear \$	2	(C)G-HD5-187841 TO 258000	
20	18G 8905		KIT-STEERING LOCK \$.....	1	(C)G-HN5-258001 TO 294250	Use 18G 9064
	BHA 5070		Switch \$	1	(C)G-HD5-258001 TO 296000	
18	51K 4001		Bolt-shear \$	2	(C)G-HN5-294251 TO 324942	
21	18G 8984		KIT-STEERING LOCK \$.....	NLA	(C)G-HN5,G-HD5-324943 TO 325855	
22	BHA 5128		Switch	1	(C)G-HN5,G-HD5-325856 TO 328800	
18	51K 4001		Bolt-shear \$	2	(C)G-HN5,G-HD5-328801 TO 410000.	
	18G 9064		KIT-STEERING LOCK.....	1	(C)G-HN5,G-HD5-325856 TO 328800	
	BHA 5288		Switch	1	(C)G-HN5,G-HD5-325856 TO 328800	
18	51K 4001		Bolt-shear \$	2	(C)G-HN5,G-HD5-328801 TO 410000.	
	18G 9118		KIT-STEERING LOCK.....	1	(C)G-HN5,G-HD5-325856 TO 328800	
	BHA 5288		Switch	1	(C)G-HN5,G-HD5-325856 TO 328800	
18	51K 4001		Bolt-shear \$	2	(C)G-HN5,G-HD5-328801 TO 410000.	
	18G 9119		KIT-STEERING LOCK.....	1	(C)G-HN5,G-HD5-328801 TO 410000.	
	BHA 5292		Switch \$	1	(C)G-HN5,G-HD5-328801 TO 410000.	
18	51K 4001		Bolt-shear \$	2	(C)G-HN5,G-HD5-328801 TO 410000.	

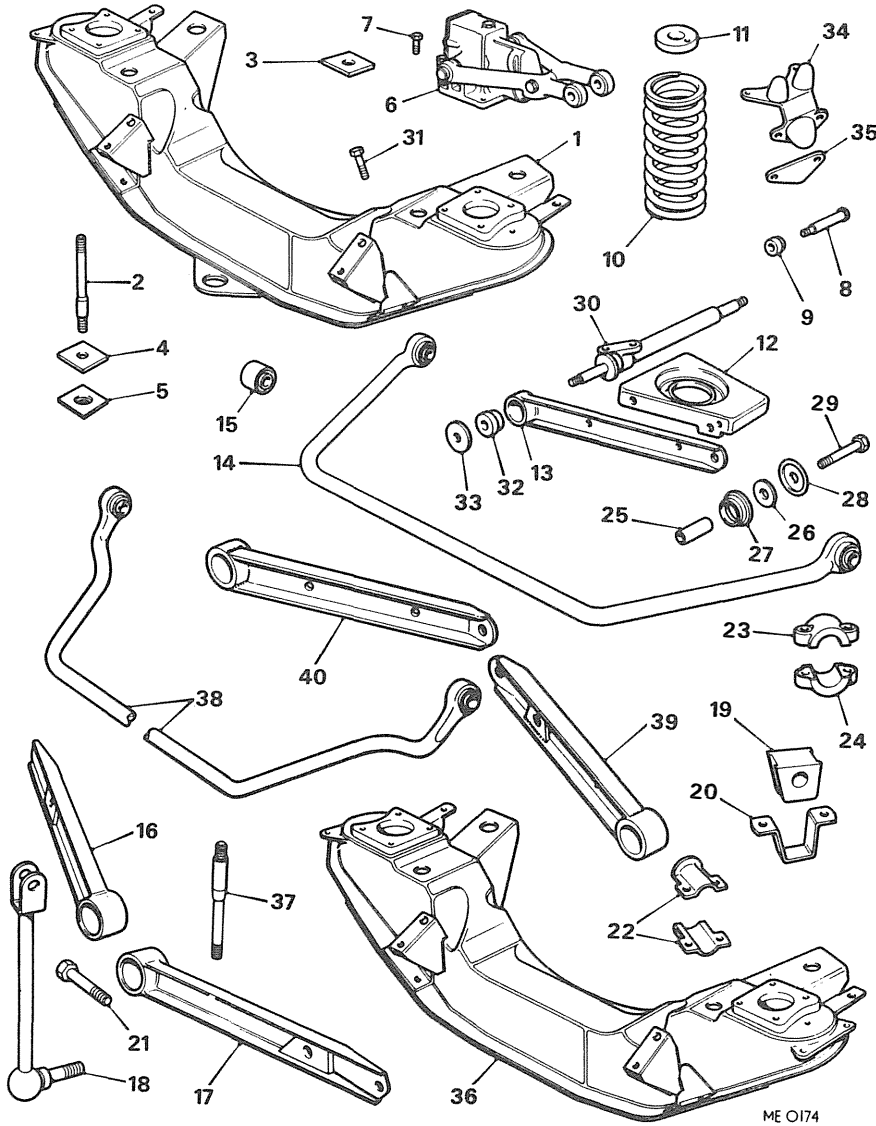


Ill. No.	Part No.	DESCRIPTION	Qty.	Change Point	REMARKS	
STEERING COLUMN-V8.						
1	BHH 806	Column-steering \$	1	(C)G-D2D1-101 TO 2100		
	BHH 1596	Column-steering	1	(C)G-D2D1-2101 TO 2903.		
2	BHH 1147	Clamp-column-lower \$	1	(C)G-D2D1-101 TO 2100		
	BHH 884	Clamp-column-upper \$	1			
	BH 605191	Bolt-clamp-lower	1			
	BH 605261	Bolt-clamp-upper	1			
3	BHH 879	Spacer	2			
	WA 108051	Washer-plain	4			
	LNZ 105	Nut	2			
4	BHH 896	Bracket-lower	1			
	SH 605041	Screw	2			
	WA 108051	Washer-plain	2			
	WL 600051	Washer-spring	2			
5	BHH 531	Tube-sealing	1	(C)G-D2D1-2101 TO 2903.		
	SH 606101	Screw-steering column bracket to body	3			
	WL 600061	Washer-spring	3			
	PWZ 206	Washer-plain	3			
	SH 605061	Screw-steering column to cup box front-top and bottom	3			
	WL 600051	Washer-spring	3			
	WA 108051	Washer-plain	3			
6	AHH 6000	JOINT ASSEMBLY-UNIVERSAL \$	1		(C)G-D2D1-101 TO 2100	
7	17H 3925	Yoke	2			
8	17H 3873	JOURNAL ASSEMBLY \$	1			
9	CCN 212	Circlip \$	4			
10	17H 3839	Bolt	2			
	WL 600051	Washer	2			
	FNZ 105	Nut	2			
	6 575732	Joint-universal	1			
10	BHH 1791	Pinch bolt-universal joint	2	(C)G-D2D1-2101 TO 2903.		
	LNZ 105	Nut-Nyloc	2			
11	BHH 1307	Wheel-steering \$	1			
12	BHH 119	Nut \$	1			
13	BHA 5135	Horn push	1			
13	AAU 1161	Horn push	1		Use prior to AAU 1161 (C)G-D2D1-2199 TO 2903.	
14	BHA 5041	Brush	1			
15	BHA 5042	Slip-ring	1			
16	18G 8905	Lock-steering \$	1			

\$ This item is subject to safety regulations.

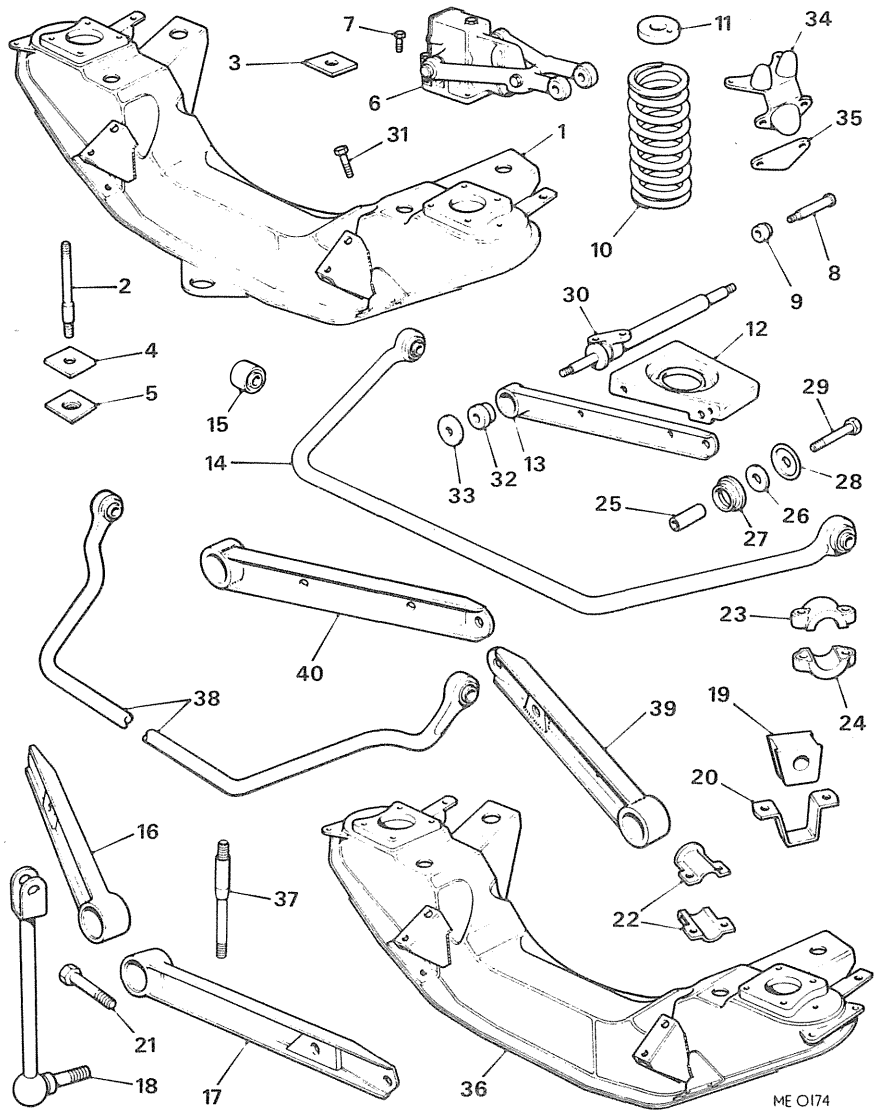


Ill. No.	Part No.	DESCRIPTION	Qty.	Change Point	REMARKS
FRONT SUSPENSION.					
1	AHH 6195	Crossmember \$	1] Use prior to BHH 803 and 804 (C)G-HN5-360301 TO 410000.] Not V8.
2	AHH 6204	Bolt-crossmember to body \$	4		
36	BHH 803	Crossmember-front-RHD \$	1		
	BHH 804	Crossmember-front-LHD \$	1		
2	AHH 6204	Bolt-mounting \$	2		
37	BHH 805	Bolt-mounting \$	2	(C)G-HD5-361001 TO 410350. (C)G-D2D1-101 TO 2903.	
3	AHH 6205	Pad-mounting-upper \$	4		
4	AHH 6206	Pad-mounting-lower \$	4		
5	AHH 6207	Plate-clamp \$	4		
	LNZ 108	Nut	8		
	PWZ 108	Washer-plain	4		
6	GSA 119	Absorber-shock \$	2		
7	53K 1025	Bolt	8		
	LWZ 306	Washer-spring	8		
8	1G 4349	Pin-fulcrum-link to shock absorber arm \$	2		
9	8G 621	Bearing-fulcrum pin \$	4		
	FNZ 407	Nut	2		
10	AHH 645 1	Spring-coil \$	2] Use prior to BHH 1225/1077 (C)G-HN5-293446 TO 410000.] Tourer. GT.
10	AHH 5789	Spring-coil \$	2		
10	BHH 1225	Spring-coil \$	2		
	BHH 1077	Spring-coil	2		
	BHH 1225	Spring-coil \$	2		
	BHH 1077	Spring-coil	2	(C)G-HD5-296196 TO 361000 (C)G-HD5-361001 TO 410000. (C)G-D2D1-101 TO 2903.	
11	AHH 5897	Spigot-spring \$	2		
	HZS 405	Screw	4		
	FNZ 104	Nut	4		
	LWZ 204	Washer-spring	4		
12	AHH 5925	Seat-spring \$	2		
13	AAA 1326	Arm-wishbone \$	4] (C)G-HN3-101 TO 108038] Used when anti- ROLL BAR IS NOT FITTED.
	HZS 507	Screw	4		
	FNZ 105	Nut	4		
	WL 600051	Washer-spring	4		



Ill. No.	Part No.	DESCRIPTION	Qty.	Change Point	REMARKS
FRONT SUSPENSION-continued.					
14	AHH 7331	BAR ASSEMBLY-ANTI-ROLL \$	1	Use prior to BHH 882	GT.
38	BHH 882	BAR ASSEMBLY-ANTI-ROLL	1	(C)G-HD5-315950 TO 361000	
38	BHH 1217	BAR ASSEMBLY-ANTI-ROLL	1	(C)G-HD5-361001 ON	Tourer.
14	AHH 7329	BAR ASSEMBLY-ANTI-ROLL \$	1	Finished at (C)G-HN5-360300	
38	BHH 882	BAR ASSEMBLY-ANTI-ROLL	1	Use prior to BHH 1217.	V8.
38	BHH 1217	BAR ASSEMBLY-ANTI-ROLL	1	(C)G-D2D1-2101 ON	GT and Tourer.
15	AHH 5939	Bush \$	1	Finished at (C)G-HN5-360300 (Tourer)	
16	AHH 5927	Arm-wishbone-front-RH \$	1	(C)G-HN5-360301 ON	V8.
17	AHH 5929	Arm-wishbone-front-LH \$	1		
13	AAA 1326	Arm-wishbone-rear	2	(C)G-HN5-360301 ON	V8.
13	AAA 1326	Arm-wishbone-front and rear	4		
39	BHH 1291	Arm-wishbone-front-RH \$	1	V8.	V8.
39	BHH 1292	Arm-wishbone-front-LH \$	1		
40	BHH 1290	Arm-wishbone-rear \$	1	V8.	V8.
18	AHH 6543	Link-anti-roll bar-RH \$	1		
18	AHH 6544	Link-anti-roll bar-LH \$	1	V8.	V8.
19	AHH 6541	Bearing-anti-roll bar \$	2		
19	1B 4526	Bearing-anti-roll bar \$	2	Finished at (C)G-HN5-360300	Tourer.
19	AHH 6541	Bearing-anti-roll bar \$	2	Use prior to AHH 6541	GT.
19	1B 4526	Bearing-anti-roll bar \$	2	(C)G-HD5-361001 ON	
19	AHH 6541	Bearing-anti-roll bar \$	2	Use prior to AHH 6541	V8.
20	1B 7356	Strap-bearing \$	2	(C)G-D2D1-2101 ON	
21	AHC 146	Bolt-anti-roll bar to link \$	2	V8.	V8.
LWZ 207	Washer-spring	2			
SH 605051	Screw	4	V8.	V8.	
SH 605071	Screw	4			
WL 600051	Washer-spring	4	V8.	V8.	
FNZ 108	Nut	2			
LWZ 208	Washer-spring	2	V8.	V8.	
22	AHH 6546	Stop-end location \$			4
FNZ 103	Nut	4	V8.	V8.	
LWZ 203	Washer-spring	4			
23	21A 667	Locator-upper \$	2	V8.	V8.
24	21A 668	Locator-lower \$	2		
PMZ 312	Screw	4	V8.	V8.	
LWZ 203	Washer-spring	4			

\$ This item is subject to safety regulations.



ME 0174

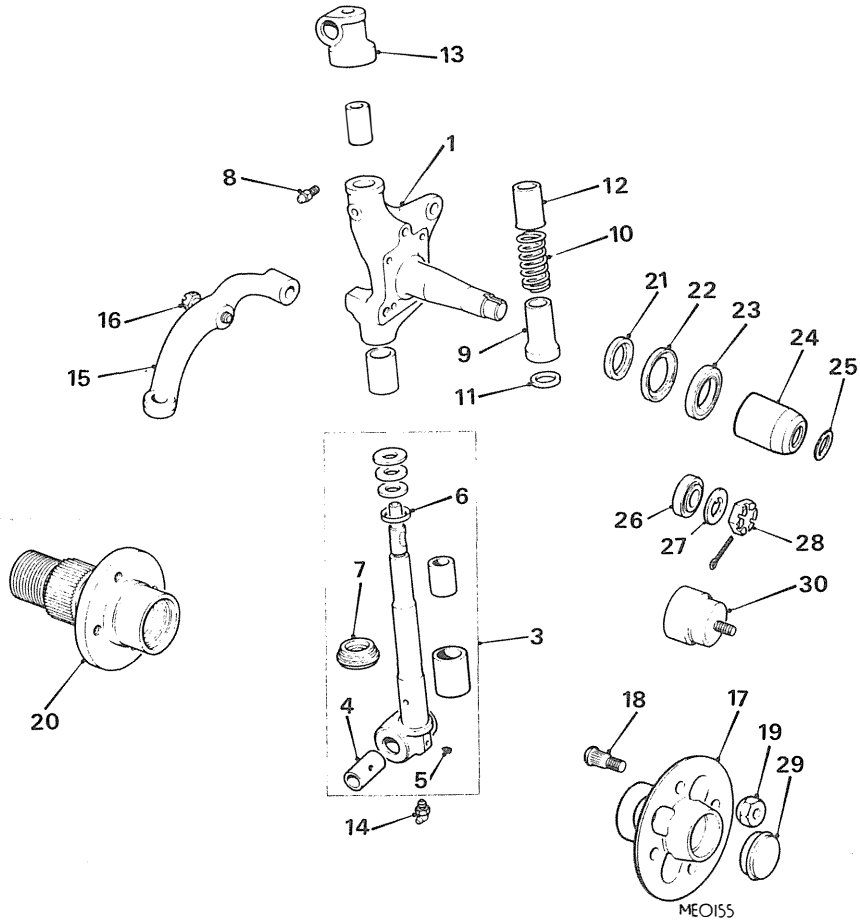
Ill. No.	Part No.	DESCRIPTION	Qty.	Change Point	REMARKS
FRONT SUSPENSION-continued.					
	HZS 507	Screw	2		
	HZS 508	Screw	4		
	FNZ 105	Nut	6		
	WL 600051	Washer-spring	6		
25	AAA 1322	Tube-distance-link \$	NLA		Use prior to BHH 1773
25	BHH 1773	Tube-distance link	2		(C)G-HN5-371019 TO 410000. (C)G-HD5-369983 TO 410000. (C)G-D2D1-2205 TO 2903. Use BHH 1773
26	AAA 1390	Washer-thrust-link	4		
27	AAA 1323	Seal-link \$	4		
28	AAA 1324	Support \$	4		
29	AHH 4001	Bolt-wishbone to link \$	2		
	FNZ 308	Nut	2		
	LWZ 208	Washer-spring	2		
30	AHH 4003	Pivot-wishbone \$	2		
31	ACB 5255	Bolt-pivot to member \$	8		
	LNZ 106	Nut-bolt-outer	4		
	FNZ 506	Nut-bolt-inner	4		
	LWZ 206	Washer-spring	8		
32	AHH 7933	Bush-wishbone arm \$	8		
	BHH 1123	Bush-wishbone arm	4		Not V8.
33	AAA 1330	Washer-retaining \$	4		
	FNZ 408	Nut	4		
34	AHH 6514	Buffer-rebound \$	2		
35	AAA 5024	Piece-distance \$	2		
	HBZ 512	Bolt	4		
	HZS 506	Screw	4		
	FNZ 105	Nut	8		
	WL 600051	Washer-spring	8		

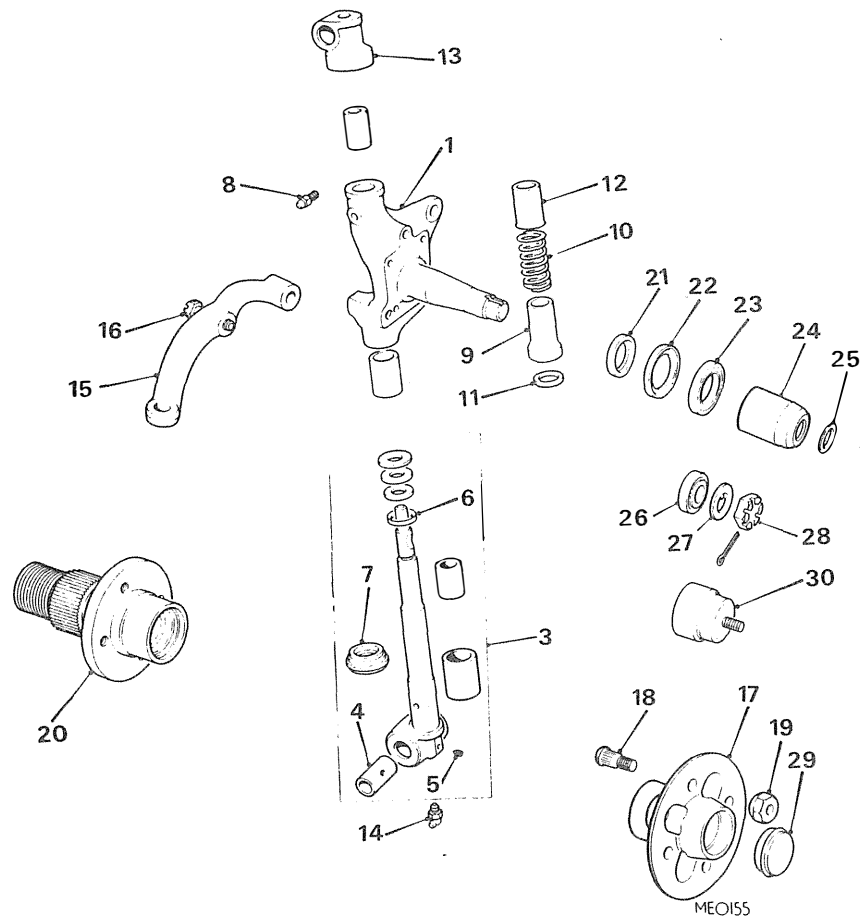
\$ This item is subject to safety regulations.

Ill. No.	Part No.	DESCRIPTION	Qty.	Change Point	REMARKS
----------	----------	-------------	------	--------------	---------

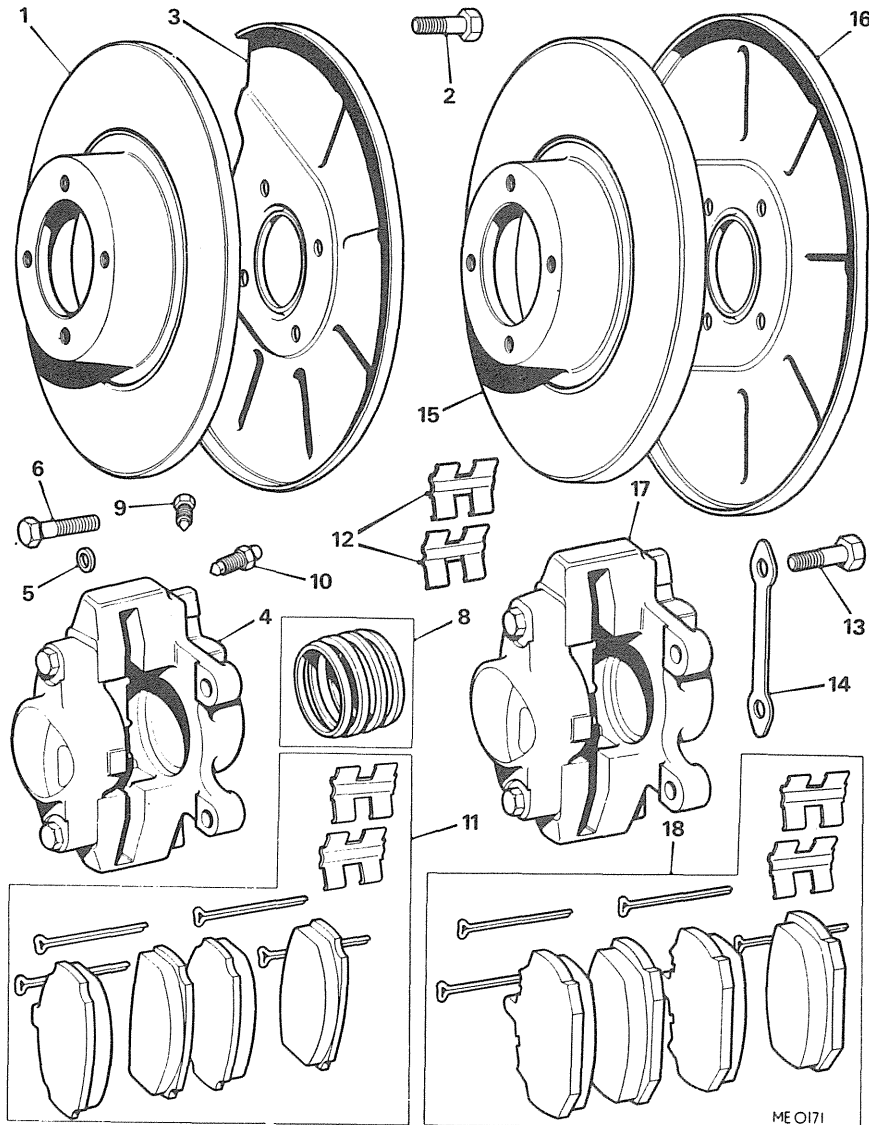
FRONT SUSPENSION-continued.

NSP		FRONT SUSPENSION ASSEMBLY	2		
1	BTB 764	Axle-swivel-RH \$	1		
	BTB 765	Axle-swivel-LH \$	1		
3	8G 4221	KIT-REPAIR-SWIVEL PIN AND BUSH \$	2	STS	
4	BTB 768	Bush-swivel pin \$	2		
5	BTB 350	Screw-grub \$	NLA		
6	TRS 1620	Ring(rubber)\$	2		
7	AAA 1323	Seal-link \$	4		
8	UHN 400	Lubricator-top	2		
8	549229	Lubricator-bottom \$	2		
9	21B 251	Tube-dust excluder-bottom \$	NLA		
10	2K 8951	Spring-dust excluder	2		
11	21B 252	Ring-sealing \$	2		
12	1G 4271	Tube-dust excluder-top \$	2		
13	ATC 4249	Trunnion-suspension link \$	2		
14	UHN 445	Lubricator-swivel pin	2		
15	BTB 396	Lever-steering-RH \$	1		
	BTB 397	Lever-steering-LH \$	1		
16	BTB 410	Bolt-lever to swivel axle \$	4		
17	BTB 361	HUB ASSEMBLY \$	2		
18	BTB 187	Stud-wheel \$	8		} Disc wheels(not V8).
19	BTB 354	Nut-wheel stud \$	8		
17	BTB 1317	HUB ASSEMBLY-FRONT \$	2		} V8.
18	BTB 187	Stud \$	8		
19	BHH 1087	Nut-wheel stud	8		
19	BHH 1087	Nut-wheel stud	8		Use with road wheel BHH 1816 GT Model-Home Market only.

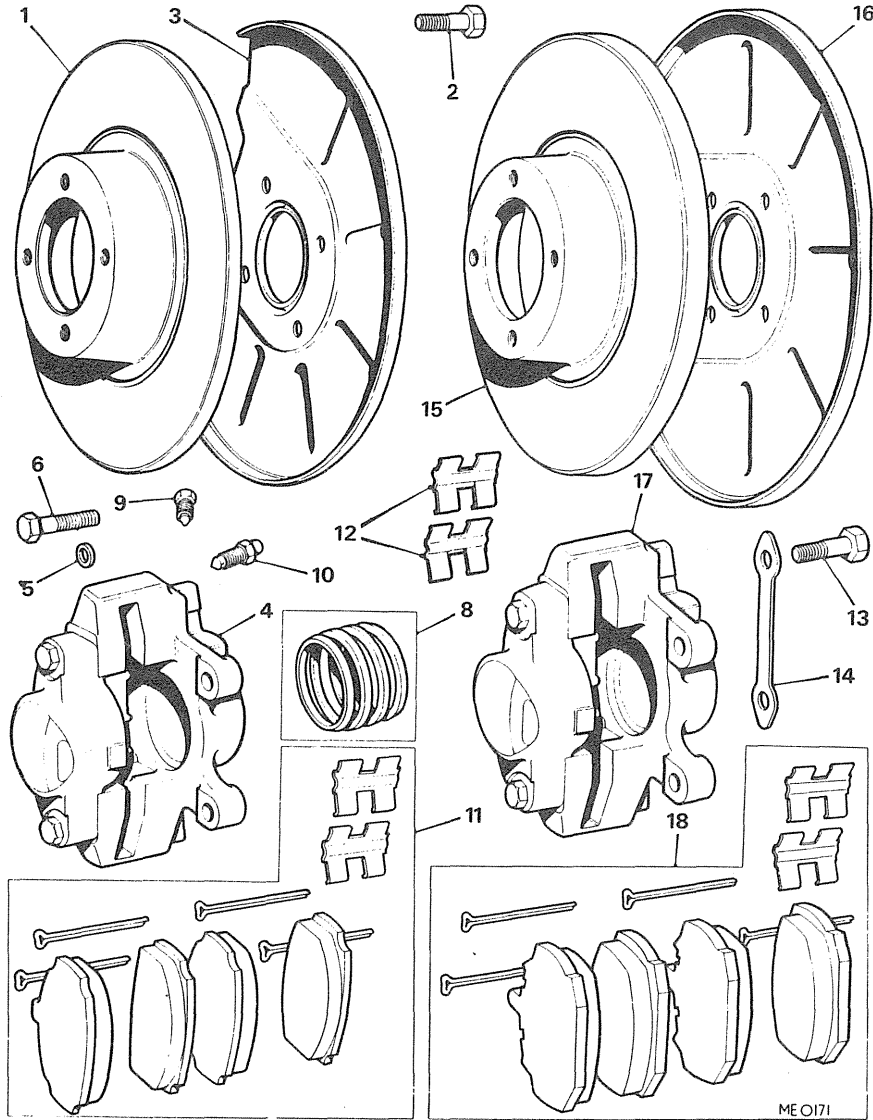




Ill. No.	Part No.	DESCRIPTION	Qty.	Change Point	REMARKS
FRONT SUSPENSION-continued.					
	BTB 347	Hub-LH	NLA	(C)G-HN3-101 TO 30850] Wire wheels.
20	BTB 730	Hub-RH \$	1	(C)G-HN3,G-HD3-30851 TO 138400	
	BTB 731	Hub-LH \$	1	(C)G-HN4-138401 TO 187210	
				(C)G-HN5-187211 TO 410000. (C)G-HD4-138401 TO 187840 (C)G-HD5-187841 TO 410000.	
21	BTB 183 GHK 1005	Collar-oil seal \$	2		
KIT-FRONT HUB BEARING AND OIL SEAL \$					
22	GHS 101	Seal-oil-front-hub \$	2		
23	GHB 105	Bearing-hub-inner \$	2		
26	GHB 102	Bearing-hub-outer \$	2		
24	88G 484	Spacer-bearing \$	2		
SHIM					
25	ATB 4240	.076mm(.003")\$	A/R		
25	ATB 4241	.127mm(.005")\$	A/R		
25	ATB 4242	.254mm(.010")\$	A/R		
25	BTB 656	.762mm(.030")\$	A/R		
27	1A 4742	Washer-bearing retaining \$	2		
28	51K 330	Nut-bearing retaining \$	2		
29	2A 4067	Cap-grease retaining \$	2		
30	BTC 392	Cap-grease retaining \$	2		
				(C)G-HN3,G-HD3-30851 TO 183400 (C)G-HN4-138401 TO 187210 (C)G-HN5-187211 TO 410000. (C)G-HD4-138401 TO 187840 (C)G-HD5-187841 TO 410000. (C)G-D2D1-101 TO 2903.	Disc wheels. Wire wheels.



Ill. No.	Part No.	DESCRIPTION	Qty.	Change Point	REMARKS
FRONT BRAKES.					
1	BTB 387	Disc-brake \$	2		Not V8.
15	BTB 1319	Disc-brake \$	2		
2	BTB 198	Bolt-disc to hub \$	8		Not V8.
	FNZ 506	Nut	8		
	LWZ 206	Washer-spring	8		Not V8.
3	BTB 412	Cover-dust-brake disc-RH \$	1		
	BTB 413	Cover-dust-brake disc-LH \$	1		Not V8.
16	BTB 1320	Cover-dust-disc brake-RH \$	1		
	BTB 1321	Cover-dust-disc brake-LH \$	1		Not V8.
	HZS 504	Bolt	8		
	WL 600051	Washer-spring	8		Not V8.
4	27H 4650	CALLIPER UNIT ASSEMBLY(LESS PADS)-RH \$	1		
	27H 4651	CALLIPER UNIT ASSEMBLY(LESS PADS)-LH \$	1		Not V8.
17	37H 8100	CALLIPER UNIT ASSEMBLY(LESS PADS)-RH \$	1		
	37H 8099	CALLIPER UNIT ASSEMBLY(LESS PADS)-LH \$	1		Not V8.
5	17H 7679	Seat-fluid channel	2		
6	27H 4353	Bolt-bridge	4		Not V8.
8	8G 8641	KIT-REPAIR-CALLIPER \$	2		
9	17H 7917	Plug	2		Not V8.
10	3H 2428	Screw-bleed \$	2		



Ill. No.	Part No.	DESCRIPTION	Qty.	Change Point	REMARKS
FRONT BRAKES-continued.					
11	GBP 113	PAD ASSEMBLY-BRAKE.....	1SET] Not V8.
11	GBP 202	PAD ASSEMBLY-BRAKE.....	1SET		
18	GBP 212	PAD ASSEMBLY-BRAKE.....	1SET] V8.
	ZPS 524	Pin-split.....	4		
12	17H 7990	Clip-pad retaining.....	2		
13	ATB 4074	Bolt-calliper to swivel axle \$.....	4		
14	BTC 114	Washer-tab-bolt \$.....	4		

Use prior to
 GBP 202
 (C)G-HN4-148833
 disc wheels 147574
 wire wheels(except
 USA)TO 187210
 (C)G-HD4-148083
 disc wheels 142735
 wire wheels(except
 USA)TO 187840
 (C)G-HN5-187211 TO
 410000.
 (C)G-HD5-187841 TO
 410000.
 (C)G-HN4-138401 TO
 187210 USA
 (C)G-HD4-138401
 TO 187840 USA
 (C)G-HN5-187211
 USA TO 410000.
 (C)G-HD5-187841
 USA TO 367803.

\$ This item is subject to safety regulations.