

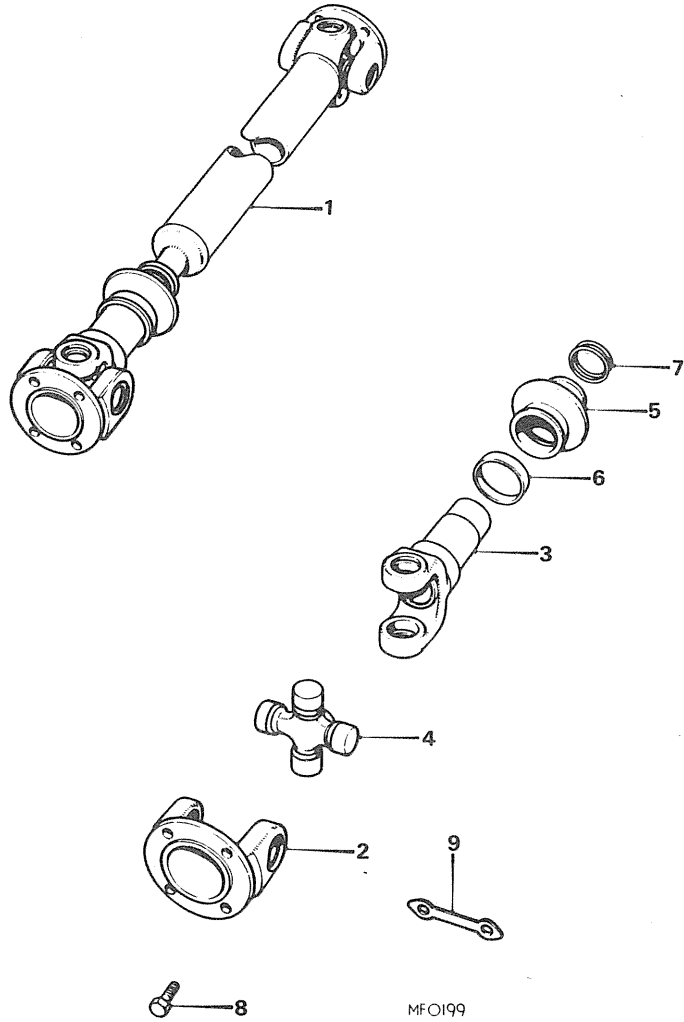
Ill. No.	Part No.	DESCRIPTION	Qty.	Change Point	REMARKS
PROPELLER SHAFT-NOT V8					
SHAFT ASSEMBLY-PROPELLER					
1	AHH 7488	30"(76.2cm)-Standard.....	1	(C)G-HN3-101 TO 132922	Banjo type axle
1	AHH 7487	31.125"(78.9cm)-Overdrive.....	1		
1	AHH 7487	31.125"(78.9cm)-Standard.....	1	See(1)foot of page (C)G-HN3-132923 TO 138400	Tubed type axle
1	AHH 7486	32"(81.3cm)-Overdrive.....	1		
1	AHH 7487	31.125"(78.9cm).....	1	(C)G-HD3-71933 TO 138400	
				(C)G-HN4-138401 TO 187210	
				(C)G-HN5-187211 TO 410000.	
				(C)G-HD4-138401 TO 187840	
				(C)G-HD5-187841 TO 410000.	
2	7H 3863	Flange-yoke.....	2		
3	7H 3865	Sleeve-yoke.....	1		
4	UHN 400	Lubricator.....	1		
5	7H 3878	Cap-dust.....	NLA		
6	7H 3879	Washer-cap(steel).....	1		
7	7H 3880	Washer-cap(cork).....	1		
8	GUJ 101	Journal.....	2		
9	7H 3858	Lubricator-journal.....	1		
10	AAA 4039	Bolt-shaft.....	8/4		Use on early type journals only Quantity reduced at (C)G-HN4, G-HD4-138401
10	22H 1107	Bolt-shaft-gearbox end.....	4	(C)G-HN4-138401 TO 187210 (C)G-HN5-187211 TO 410000. (C)G-HD4-138401 TO 187840 (C)G-HD5-187841 TO 410000.	
	LNZ 105	Nut.....	8		
	WL 600051	Washer-spring.....	4		

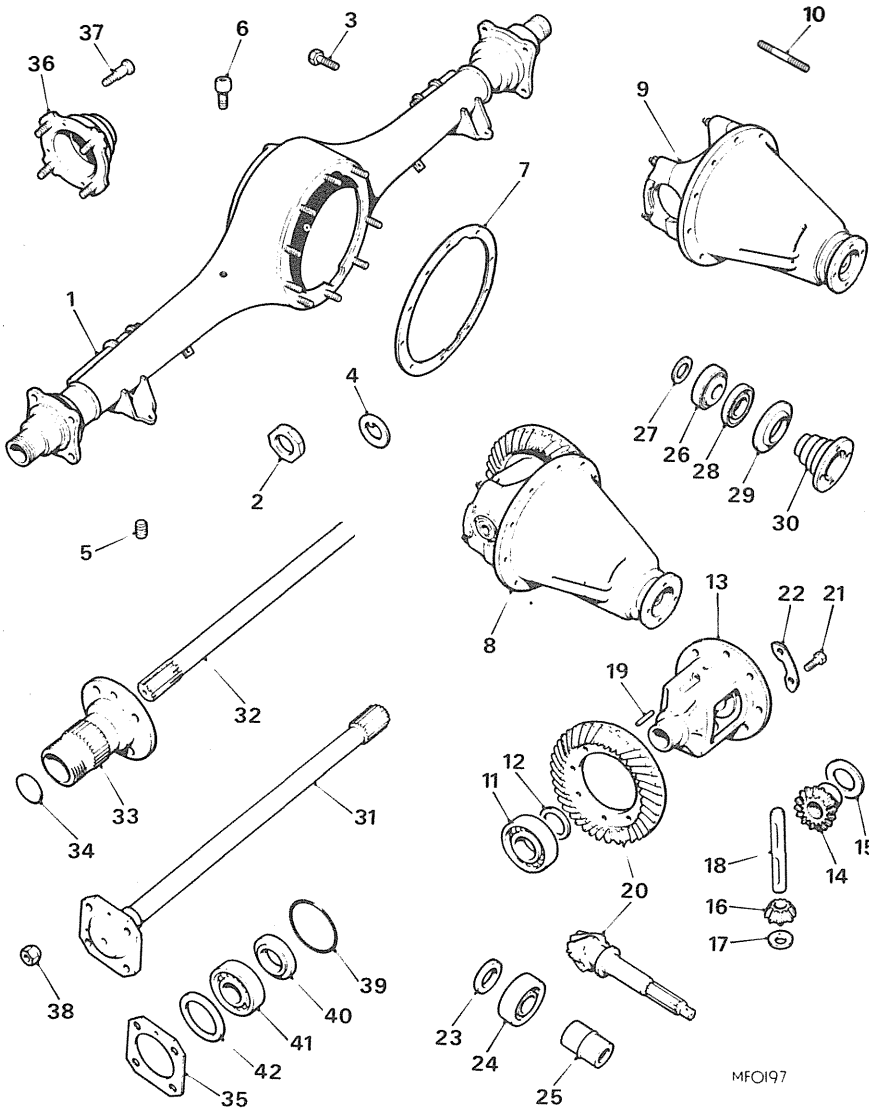
(1) From (C)G-HN3-123716 TO 132922 either a banjo or tubed axle is fitted

Ill. No.	Part No.	DESCRIPTION	Qty.	Change Point	REMARKS
----------	----------	-------------	------	--------------	---------

PROPELLER SHAFT-V8

1	AHC 113	SHAFT ASSEMBLY-PROPELLER.....	1		
2	600656	Flange-yoke	2		
3	27H 8095	Sleeve-yoke	1		
4	GUJ 108	Journal	2		
5	27H 8098	Boot(rubber)	1		
6	27H 8097	Clip	1		
7	27H 8100	Clip-flange.....	2		
8	22B 483	Bolt-gearbox flange.....	4		
9	53K 117	Bolt-axle flange.....	4		
	WL 600051	Washer-spring	4		
	GHF 223	Nut	8		





Ill. No.	Part No.	DESCRIPTION	Qty.	Change Point	REMARKS
----------	----------	-------------	------	--------------	---------

REAR AXLE-BANJO TYPE

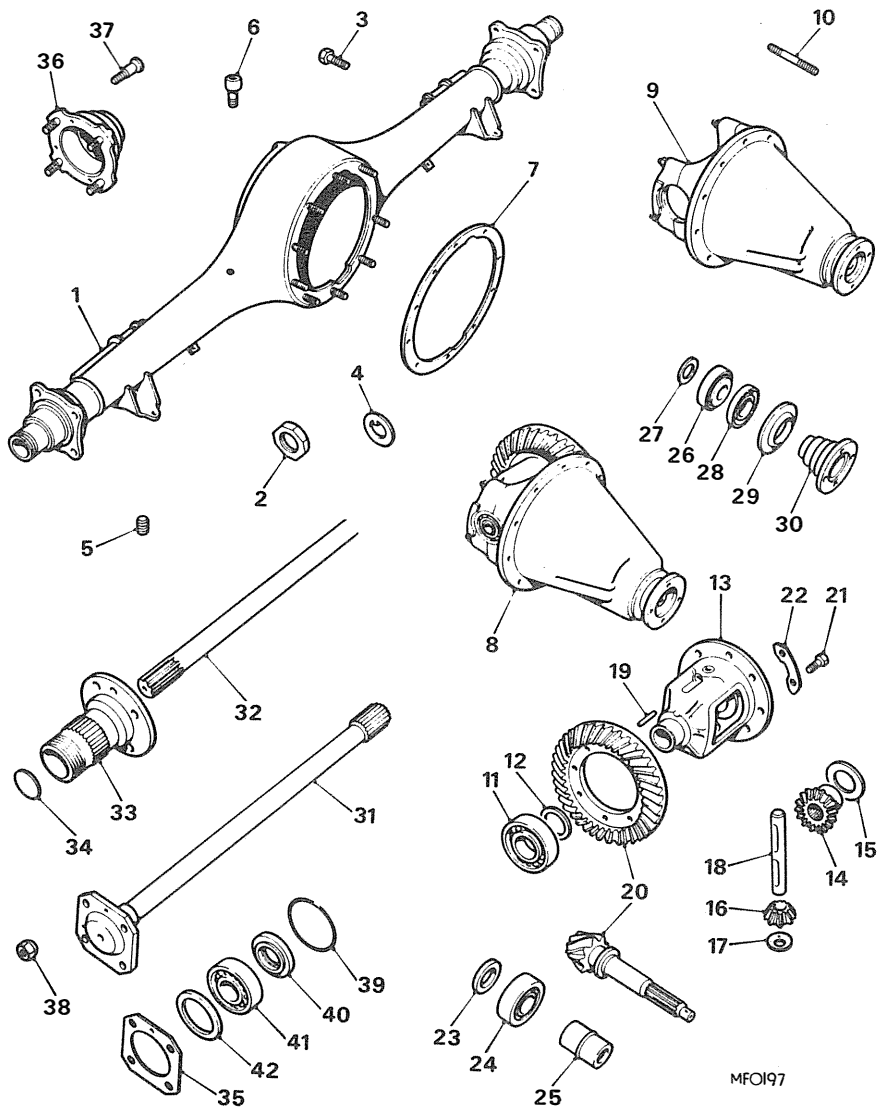
BANJO TYPE AXLE FITTED UP TO
(C)G-HN3-132922

	NSP	AXLE ASSEMBLY.....	1		
1	BTB 533	CASE ASSEMBLY.....	NLA		
	BTB 534	CASE ASSEMBLY.....	1		
2	1G 7448	Nut-bearing retaining-RHT.....	1		
	1G 7582	Nut-bearing-retaining-LHT.....	1		
3	2A 7226	Stud-gear carrier.....	10		
	FNZ 106	Nut.....	2		
4	1G 7584	Washer-bearing retaining nut.....	2		
	FNZ 105	Nut.....	10		
	WL 600051	Washer-spring.....	10		
5	6K 499	Plug-drain.....	1		
	6K 499	Plug-filler.....	1		
6	1H 3364	Breather.....	1		
7	1G 7465	Gasket-axle case.....	1		
8	BTB 414	DIFFERENTIAL ASSEMBLY- 11/43 TEETH,(3.909:1 RATIO).....	1		
9	ATB 7181	CARRIER ASSEMBLY.....	1		
10	51K 886	Stud.....	4		
	LWN 307	Washer-spring.....	4		
	FNN 107	Nut.....	4		
	2K 8938	Bearing-differential.....	2		
		WASHER-BEARING PACKING			
12	2K 7993	.002"(.051mm).....	A/R		
12	ATB 7239	.003"(.067mm).....	A/R		
12	2K 7435	.004"(.102mm).....	A/R		
12	6K 503	.006"(.152mm).....	A/R		
12	1G 7600	.010"(.254mm).....	A/R		
13	BTB 328	Cage-differential.....	1		
14	BTB 150	Wheel-differential.....	2		
15	ATB 7072	Washer-thrust-wheel.....	2		
16	BTB 1249	Pinion-differential.....	2		
17	1G 7445	Washer-thrust-pinion.....	1		
18	1G 7444	Pin-pinion.....	1		
19	6K 842	Peg-pinion pin.....	1		
		CROWN WHEEL(WITH PINION)			
20	BTB 653	11/43 teeth(3.909:1 ratio).....	1		
20	88G 284	9/41 teeth(4.555:1 ratio).....	1		
20	88G 283	10/43 teeth(4.300:1 ratio).....	1		
21	ATA 7232	Bolt-crown wheel to cage.....	8		
22	6K 875	Washer-tab.....	4		

(C)G-HN3-101 TO
132915.Disc wheels
132922.Wire wheels
See(1)foot of page

Disc wheels only
Wire wheels only

(1) From (C)G-HN3-123716 TO 132922 either a banjo or tubed axle was fitted

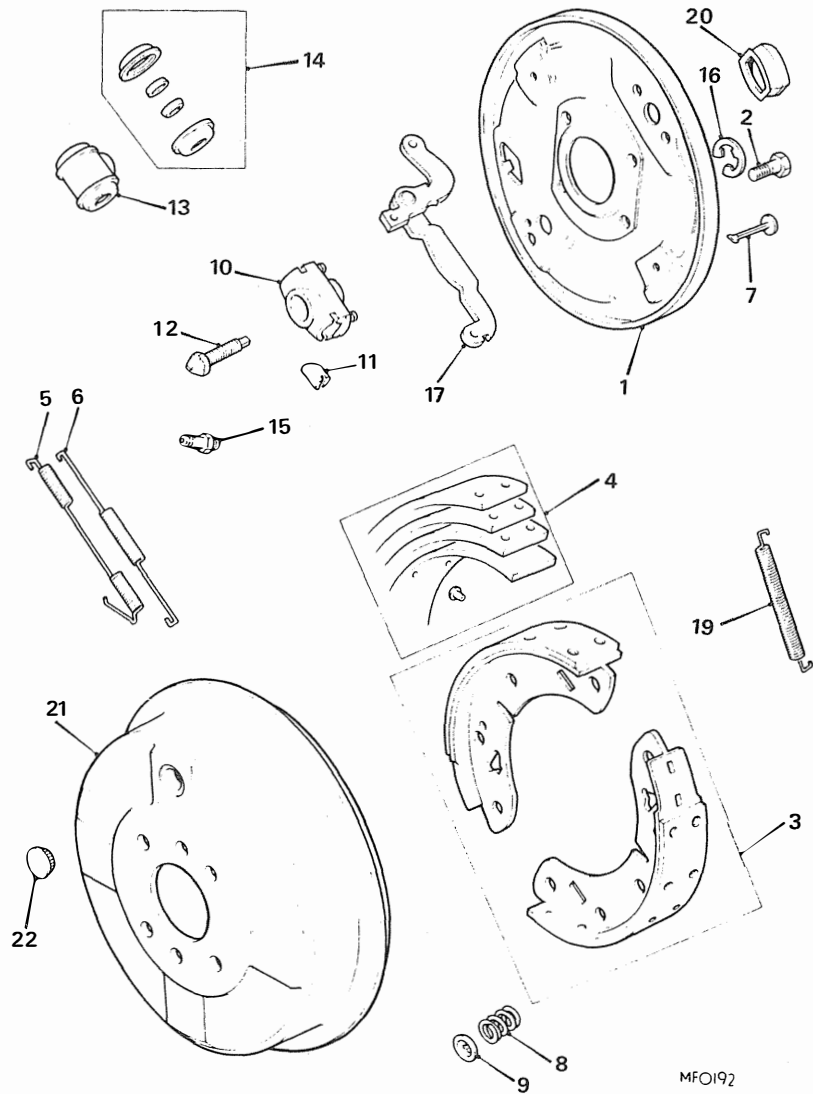


Ill. No.	Part No.	DESCRIPTION	Qty.	Change Point	REMARKS
----------	----------	-------------	------	--------------	---------

REAR AXLE-BANJO TYPE-continued

WASHER-PINION-THRUST					
23	ATB 7064	.126"(3.20mm)	1		One used of SELECTED SIZE
23	ATB 7065	.124"(3.15mm)	1		
23	ATB 7066	.122"(3.10mm)	1		
23	ATB 7067	.120"(3.05mm)	1		
23	ATB 7068	.118"(3.00mm)	1		
23	ATB 7069	.116"(2.95mm)	1		
23	ATB 7070	.114"(2.90mm)	1		
23	ATB 7071	.112"(2.85mm)	1		
24	6K 287	Bearing-pinion-inner	1		
25	1B 7240	Spacer-bearing	1		
26	2A 7213	Bearing-pinion-outer	1		
SHIM-OUTER BEARING					
27	ATB 7102	.102mm(.004")	A/R		(C)G-HN3-101 TO 132915.Disc wheels 132922.Wire wheels See(1)foot of page
27	ATB 7103	.152mm(.006")	A/R		
27	ATB 7104	.203mm(.008")	A/R		
27	ATB 7105	.254mm(.010")	A/R		
27	ATB 7106	.304mm(.012")	A/R		
27	ATB 7107	.508mm(.020")	A/R		
27	ATB 7108	.762mm(.030")	A/R		
28	88G 320	Seal-oil	1		
29	1G 7439	Cover-dust	1		
30	ATB 7059	Flange-universal joint	1		
	FNZ 612	Nut	1		
	LWZ 212	Washer-spring	1		
31	BTB 336	Shaft-axle	2		Disc wheels only Wire wheels only
32	BTB 153	Shaft-axle	2		
33	BTB 332	Extension-hub-RH	NLA		(C)G-HN3-101 TO 30850 (C)G-HN3-30851 TO 132922
	BTB 333	Extension-hub-LH	NLA		
33	BTB 732	Extension-hub-RH	NLA		
	BTB 733	Extension-hub-LH	1		
34	2K 8160	Plug-welch-extension	2		
35	GFG 115	Gasket-shaft to hub	2		
	CMZ 410	Screw	2		
36	BTB 334	Hub	NLA		Disc wheels only
38	BTB 354	Nut-wheel stud	8		
	BTB 335	HUB ASSEMBLY	NLA		(C)G-HN3-101 TO 132915.Disc wheels 132922.Wire wheels See(1)foot of page
37	BTB 253	Stud-brake drum and extension-hub	NLA		
39	ATB 7354	Ring-oil seal	2		
40	GHS 104	Seal-oil	2		
41	GHB 127	Bearing-hub	2		
42	1G 7436	Spacer-bearing	2		Disc wheels only

(1) From (C)G-HN3-123716 TO 132922 either a banjo or tubed axle is fitted



Ill. No.	Part No.	DESCRIPTION	Qty.	Change Point	REMARKS
----------	----------	-------------	------	--------------	---------

REAR BRAKES-BANJO TYPE AXLE

1	BTB 366	Plate-brake-RH.....	1		
	BTB 367	Plate-brake-LH.....	1		
2	51K 1380	Bolt.....	8		
	FNZ 106	Nut.....	8		
	LWZ 206	Washer-spring.....	8		
3	GBS 520	SHOE ASSEMBLY-BRAKE.....	2STS		
4	18G 8333	Lining.....	NLA		
5	17H 7994	Spring-pull-off-cylinder end- RH.....	1		
	17H 7995	Spring-pull-off-cylinder end- LH.....	1		
6	27H 6478	Spring-pull-off-adjuster end.....	2		
7	17H 7993	Pin-brake-shoe steady.....	4		
8	17H 7969	Spring-pin.....	4		
9	17H 7971	Washer-spring retaining.....	4		
10	17H 7974	ADJUSTER ASSEMBLY.....	2		
11	27H 6472	Tappet.....	4		
12	27H 2203	Wedge.....	2		
	FNZ 104	Nut.....	4		
	LWZ 204	Washer-spring.....	4		
13	GWC 1103	CYLINDER ASSEMBLY-WHEEL.....	2		
14	8G 8674	KIT-REPAIR-WHEEL CYLINDER.....	2STS		
15	17H 7623	Screw-bleed.....	2		
16	17H 7949	Clip-spring-wheel cylinder retaining.....	2		
17	17H 6787	Lever-hand brake-RH.....	1		
	17H 6788	Lever-hand brake-LH.....	1		
17	37H 2005	Lever-hand brake-RH.....	1		
	37H 2006	Lever-hand brake-LH.....	1		
19	17H 8737	Spring-pull-off-hand brake lever.....	2		
20	17H 8057	Boot-hand brake lever.....	2		
21	BTB 338	Drum-brake.....	2		
	CMZ 410	Screw.....	4		
	LNZ 208	Nut-drum retaining.....	8		
		PLUG-DRUM .75"(19.05mm).....	2		
22	ACH 9373	.5"(12.70mm).....	2		
	AHH 5514		2		

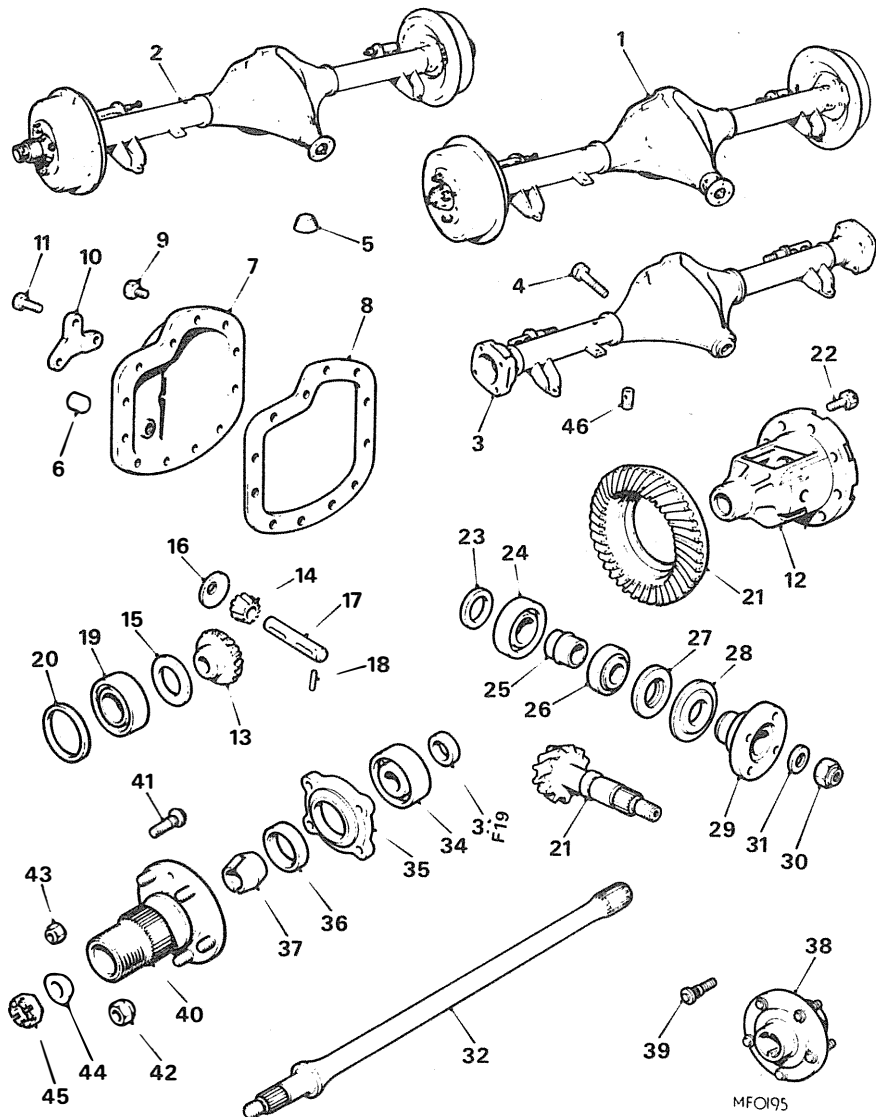
(C)G-HN3-101 TO
132915.Disc wheels
132922.Wire wheels
See(1)foot of page

Use prior to
37H 2005 and 2006
(C)G-HN3-127394 TO
132915.Disc wheels
(C)G-HN3-123879 TO
132922.Wirw wheels

(C)G-HN3-101 TO
132915.Disc wheels
132922.Wire wheels
See(1)foot of page

Disc wheels only
Wire wheels only

(1) From (C)G-HN3-123716 TO 132922 either a banjo or tubed axle is fitted



Ill. No.	Part No.	DESCRIPTION	Qty.	Change Point	REMARKS
----------	----------	-------------	------	--------------	---------

REAR AXLE-TUBED TYPE

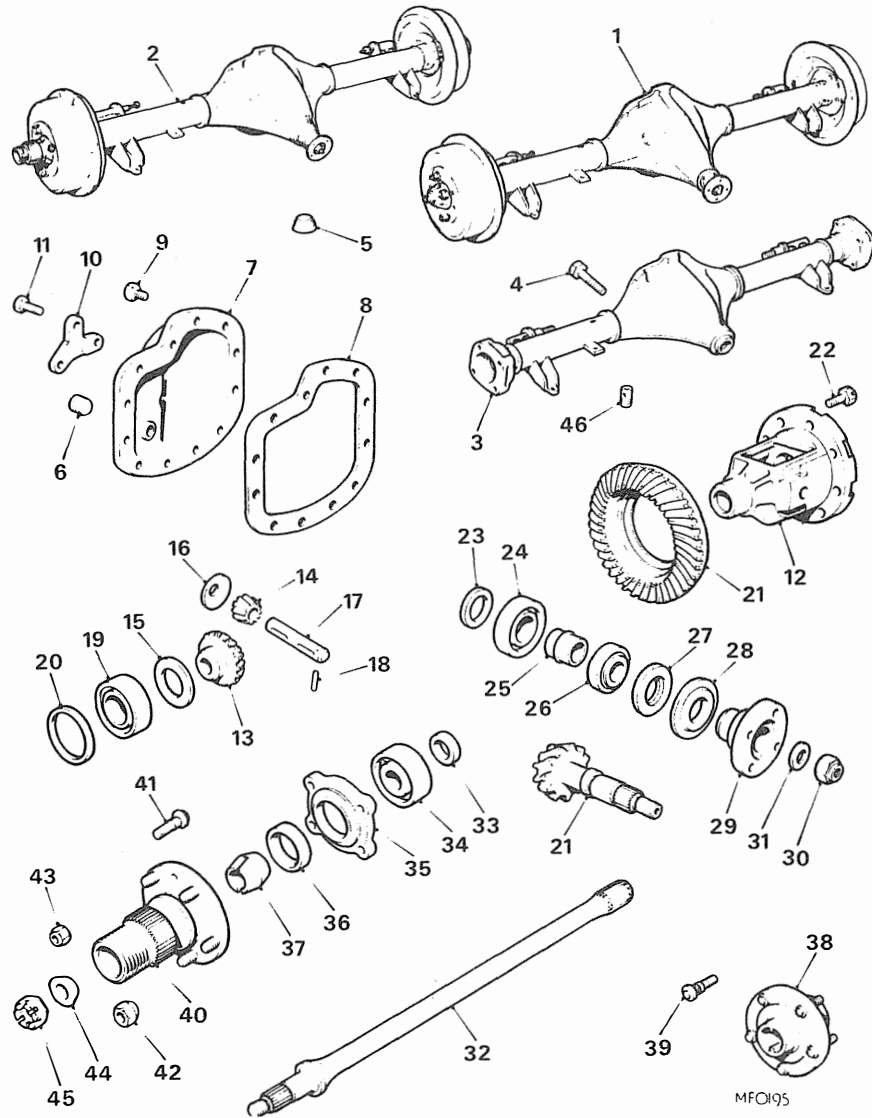
FROM (C)G-HN3-132923
 (SEE NOTE (1))-TUBED TYPE
 AXLE FITTED, TUBED TYPE FITTED
 FROM OUTSET FOR GT

AXLE ASSEMBLY

1	BTB 1106	TOURER-NOT AUTOMATIC (3.909:1 Ratio).....	1		Disc wheels.
2	BTB 1107	TOURER NOT AUTOMATIC (3.909:1 ratio).....	1		Wire wheels.
1	BTB 1106	TOURER AUTOMATIC (3.909:1 ratio).....	1	Use prior to BTB 1124 and 1126	Disc wheels.
2	BTB 1107	TOURER AUTOMATIC (3.909:1 ratio).....	1		Wire wheels.
1	BTB 1124	TOURER AUTOMATIC (3.7:1 ratio).....	1	(C)G-HN4-158231 TO 187210	Disc wheels.
2	BTB 1126	TOURER AUTOMATIC (3.7:1 ratio).....	1	(C)G-HN5-187211 TO 328100	Wire wheels.
1	BTB 1106	GT NOT AUTOMATIC (3.909:1 ratio).....	1	Use prior to BTB 1108 and 1109	Disc wheels.
2	BTB 1107	GT NOT AUTOMATIC (3.909:1 ratio).....	1		Wire wheels.
1	BTB 1108	GT NOT AUTOMATIC OR V8 (3.909:1 ratio).....	1	(C)G-HD4-138401 TO 187840	Disc wheels.
2	BTB 1109	GT NOT AUTOMATIC (3.909:1 ratio).....	1	(C)G-HD5-187841 ON	Wire wheels.
1	BTB 1106	GT AUTOMATIC (3.909:1 ratio).....	1	Use prior to BTB 1108 and 1109	Disc wheels.
2	BTB 1107	GT AUTOMATIC (3.909:1 ratio).....	1		Wire wheels.
1	BTB 1108	GT AUTOMATIC (3.909:1 ratio).....	1	(C)G-HD4-148083 Disc,142735 Wire TO 158230,(Not USA)	Disc wheels.
2	BTB 1109	GT AUTOMATIC (3.909:1 ratio).....	1	(C)G-HD4-138401 TO 158230(USA)	Wire wheels.
1	BTB 1125	GT AUTOMATIC-(NOT V8) (3.7:1 ratio).....	1	(C)G-HD4-158231 TO 187840	Disc wheels
2	BTB 1127	GT AUTOMATIC-(NOT V8) (3.7:1 ratio).....	1	(C)G-HD5-187841 TO 328800	Wire wheels
1	BTB 1167	V8 \$ (3.07:1 ratio).....	1	(C)G-D2D1-101 ON	Disc wheels
3	BTB 863	CASE ASSEMBLY.....	1		Disc wheels
3	BTB 835	CASE ASSEMBLY.....	1		Wire wheels
4	BTB 669	Bolt-bearing cap.....	4		
	FNZ 106	Nut.....	2		

(1) From (C)G-HN3-123716 TO 132922 either a banjo or tubed axle is fitted

\$ This item is subject to safety regulations



Ill. No.	Part No.	DESCRIPTION	Qty.	Change Point	REMARKS
----------	----------	-------------	------	--------------	---------

REAR AXLE-TUBED TYPE-continued

5	6K 499	Plug-drain	1		
6	6K 499	Plug-filler	1		
7	BTB 675	Cover-axle case	1		
8	BTB 674	Gasket-axle case	1		
	HZS 504	Bolt-cover	8		
9	BTB 872	Bolt-clip and cover	NLA		
	LWZ 205	Washer-spring	10		
11	BTB 676	Bolt-bracket	2		
	WL 600051	Washer-spring	2		
12	BTB 866	Cage-differential	1		Not V8 V8
12	BTB 840	Cage-differential	1		
13	BTB 428	Wheel-differential	2		
14	BTB 1249	Pinion-differential	2		
15	ATB 7072	Washer-thrust-pinion	2		
16	1G 7445	Washer-thrust-pinion	2		
17	BTB 871	Pin-pinion	1		
18	BTB 715	Roll-pin	1		
19	BTC 9001	Bearing-differential	2		
COLLAR DISTANCE					
20	BTC 466	.149"(3.784mm)	2		Two used of SELECTIVE SIZE
20	BTC 465	.147"(3.734mm)	2		
20	BTC 464	.145"(3.683mm)	2		
20	BTC 463	.143"(3.632mm)	2		
20	BTC 462	.141"(3.581mm)	2		
20	BTC 461	.139"(3.530mm)	2		
20	BTC 286	.137"(3.480mm)	2		
20	BTC 287	.135"(3.429mm)	2		
20	BTC 288	.133"(3.378mm)	2		
20	BTC 290	.129"(3.277mm)	2		
20	BTC 291	.127"(3.226mm)	2		
20	BTC 292	.125"(3.175mm)	2		
20	BTC 293	.123"(3.124mm)	2		
20	BTC 460	.121"(3.073mm)	2		
20	BTC 459	.119"(3.022mm)	2		
20	BTC 458	.117"(2.972mm)	2		
20	BTC 457	.115"(2.921mm)	2		
CROWN WHEEL AND PINION					
21	BTB 856	11 x 43 teeth (3.909:1 ratio)	1		Use prior to BTB 1244
21	BTB 1244	10 x 37 teeth (3.7:1 ratio)	1		
					Automatic
21	BTB 856	11 x 43 teeth (3.909:1 ratio)	1		Standard and Overdrive(Not V8)
21	BTB 900	14 x 43 teeth (3.07:1 ratio)	1		

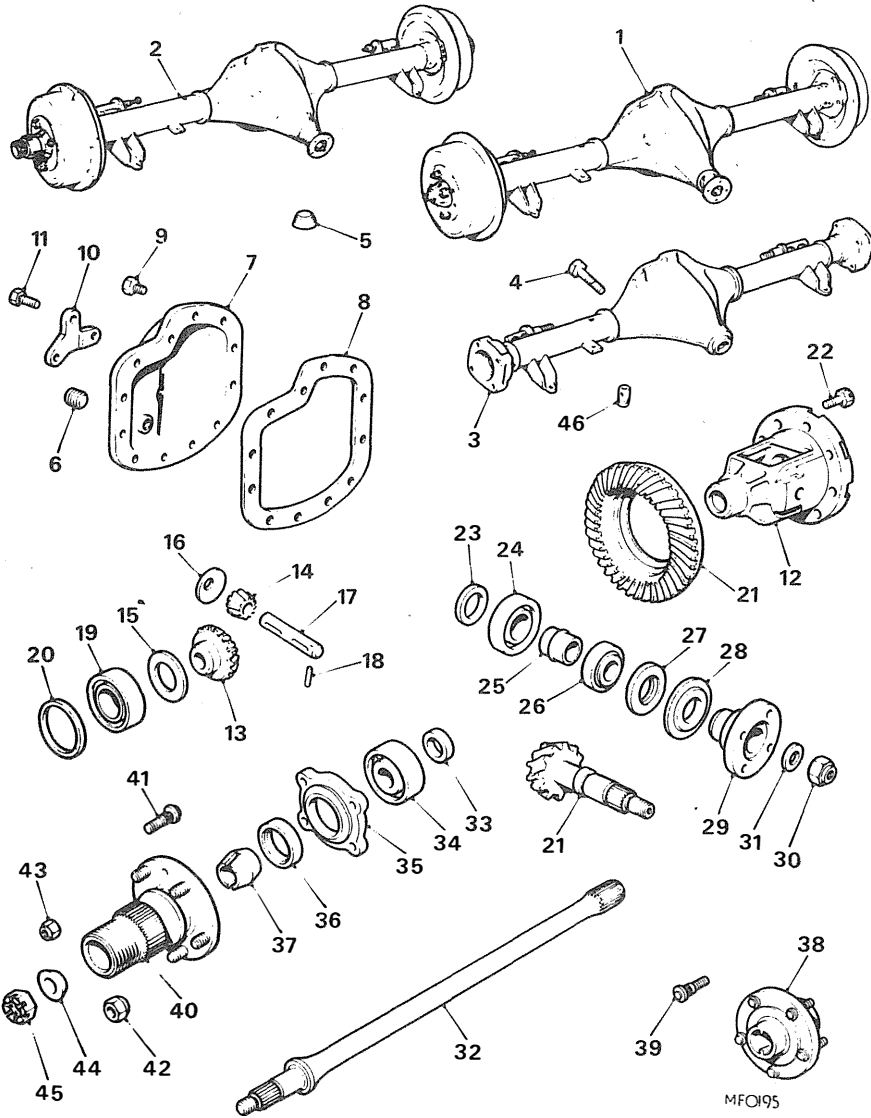
(C)G-HN3-132916
Disc wheels
132923.Wire wheels
TO 138400.
See(1)foot of page
(C)G-HD3-71933 TO
138400
(C)G-HD4-138401 TO
187840
(C)G-HD5-187841 TO
410350
(C)-D2D1-101 TO
2903.

(1) From (C)G-HN3-123716 TO 132922 either a banjo or tubed axle is fitted

Ill. No.	Part No.	DESCRIPTION	Qty.	Change Point	REMARKS
----------	----------	-------------	------	--------------	---------

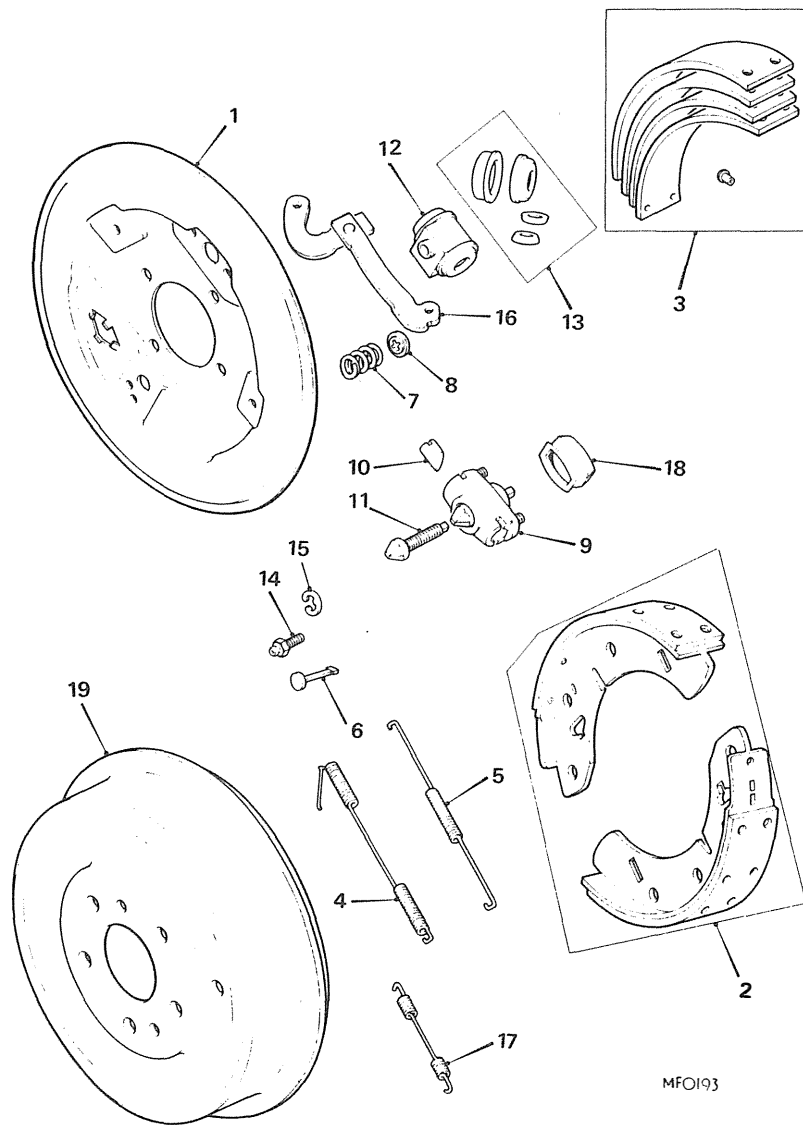
REAR AXLE-TUBED TYPE-continued

22	BTB 432	Bolt-crown wheel to cage.....	8		(C)G-HN3-123916 Disc wheel 132923.Wire wheel TO 138400 (C)G-HD3-71933 TO 138400 (C)G-HN4-138401 TO 187210 (C)G-HN5-187211 TO 410000 (C)G-HD4-138401 TO 187840 (C)G-HD5-187841 TO 410350 (C)G-D2D1-101 TO 2903.
		WASHER-PINION THRUST			
23	BTB 844	5.64mm(.222").....	1		
23	BTB 845	5.59mm(.220").....	1		
23	BTB 846	5.54mm(.218").....	1		
23	BTB 847	5.488mm(.216").....	1		
23	BTB 848	5.437mm(.214").....	1		
23	BTB 849	5.396mm(.212").....	1		
23	BTB 850	5.33mm(.210").....	1		
23	BTB 851	5.285mm(.208").....	1		
24	BTB 852	Bearing pinion-inner.....	1		Not V8 V8
25	BTB 853	Spacer-bearing.....	1		
26	BTB 854	Bearing-pinion-outer.....	1		Not V8 V8
27	88G 490	Seal-oil-pinion.....	1		
27	BTB 1326	Seal-oil-pinion.....	1		(C)G-HN3-132463 Disc wheels 129287.Wire wheels TO 138400.
28	BTC 350	Cover-dust.....	1		
29	BTB 867	Flange-universal joint.....	1		Disc wheels only Wire wheels only
29	BTB 855	Flange-universal joint.....	1		
30	BTB 753	Nut.....	1		See (1)foot of page (C)G-HD3-71933 TO 138400
31	BTB 933	Washer-plain.....	1		
32	BTB 700	Shaft-axle.....	2		Wire wheels only
32	BTB 714	Shaft-axle.....	2		
33	BTB 681	Spacer-bearing.....	2		(C)G-HN4-138401 TO 187210 (C)G-HN5-187211 TO 410000
34	GHB 158	Bearing.....	2		
35	BTB 682	Cap-hub bearing.....	2		Use GHS 179
36	GHS 140	Seal-oil.....	NLA		
36	GHS 179	Seal-oil.....	2		Disc wheels only
37	AAA 982	Collar-oil seal.....	2		
38	BTB 704	FLANGE ASSEMBLY-DRIVING Stud-wheel.....	2		(C)G-HD4-138401 TO 187840 (C)G-HD5-187841 TO 410350
39	BTB 229	FLANGE ASSEMBLY-DRIVING- RH \$.....	1		
40	BTB 716	FLANGE ASSEMBLY-DRIVING- LH \$.....	1		(C)G-D2D1-101 TO 2903
	BTB 717	FLANGE ASSEMBLY-DRIVING- LH \$.....	1		
41	BTB 187	Stud \$.....	8		Disc wheels. Not V8 V8
42	BTB 354	Nut-wheel stud \$.....	8		
42	BHH 1087	Nut-wheel stud.....	8		Use with road wheel BHH 1816 GT Model-Home Market only. Wire wheels
42	BHH 1087	Nut-wheel stud.....	8		
43	BTB 728	Nut-drum to flange.....	8		
44	BTA 243	Collar-drive shaft \$.....	2		
45	BTA 249	Nut-drive shaft \$.....	2		
46	1H 3364	Breather.....	1		



(1) From (C)G-HN3-123716 TO 132922 either a banjo or tubed axle is fitted

\$ This item is subject to safety regulations



MFO193

Ill. No.	Part No.	DESCRIPTION	Qty.	Change Point	REMARKS
REAR BRAKES-TUBED AXLE					
1	27H 6476	Plate-brake RH.....	1] See(1)foot of page] GT.Not V8
	27H 6477	Plate-brake-LH.....	1		
1	37H 2309	Plate-brake-RH \$.....	1		
	37H 2310	Plate-brake-LH \$.....	1		
1	27H 6476	Plate-brake-RH.....	1] (C)G-HD4-148083 Disc wheels, 142735 Wire wheels (except USA)ON (C)G-HD4-138401 (USA)ON (C)G-D2D1-101 ON] V8
	27H 6477	Plate-brake-LH.....	1		
	HBZ 616	Bolt.....	8] Use prior to GBS 595. See(2)foot of page] Not V8
	LNZ 406	Nut.....	8		
2	GBS 520	SHOE ASSEMBLY-BRAKE.....	2STS		
3	18G 8333	Lining.....	NLA		
2	GBS 595	SHOE ASSEMBLY-BRAKE \$.....	2STS] (C)G-D2D1-101 ON] V8
3	18G 8346	Lining \$.....	1BOX		
2	GBS 602	SHOE ASSEMBLY-BRAKE \$.....	2STS		
3	18G 9083	Lining \$.....	2STS		
4	17H 7994	Spring-pull-off-cylinder end-RH \$.....	1		
4	17H 7995	Spring-pull-off-cylinder end-LH \$.....	1		
5	27H 6478	Spring-pull-off-adjuster end \$.....	4		
6	17H 7993	Pin-brake shoe steady \$.....	4		
7	17H 7969	Spring-pin \$.....	4		
8	17H 7971	Washer-spring-retaining \$.....	4		
9	17H 7974	ADJUSTER ASSEMBLY \$.....	2		
10	27H 6472	Tappet \$.....	4		
11	27H 2203	Wedge \$.....	2		
	FNZ 104	Nut.....	4		
	LWN 204	Washer-spring.....	4		

CHANGE POINTS.

- (1).(C)G-HN3-132916.Disc wheels,132923 Wire wheels to 138400.(C)G-HD3-71933TO 138400.
- (C)G-HN4-138401 ON.
- (2).(C)G-HN4-148833 Disc wheels,147573 Wire wheels(except USA)ON.
- (C)G-HD4-148083 Disc wheels,142735 Wire wheels(except USA)ON.
- (C)G-HN4,G-HD4-138401(USA)ON.

\$ This item is subject to safety regulations

III. No.	Part No.	DESCRIPTION	Qty.	Change Point	REMARKS
----------	----------	-------------	------	--------------	---------

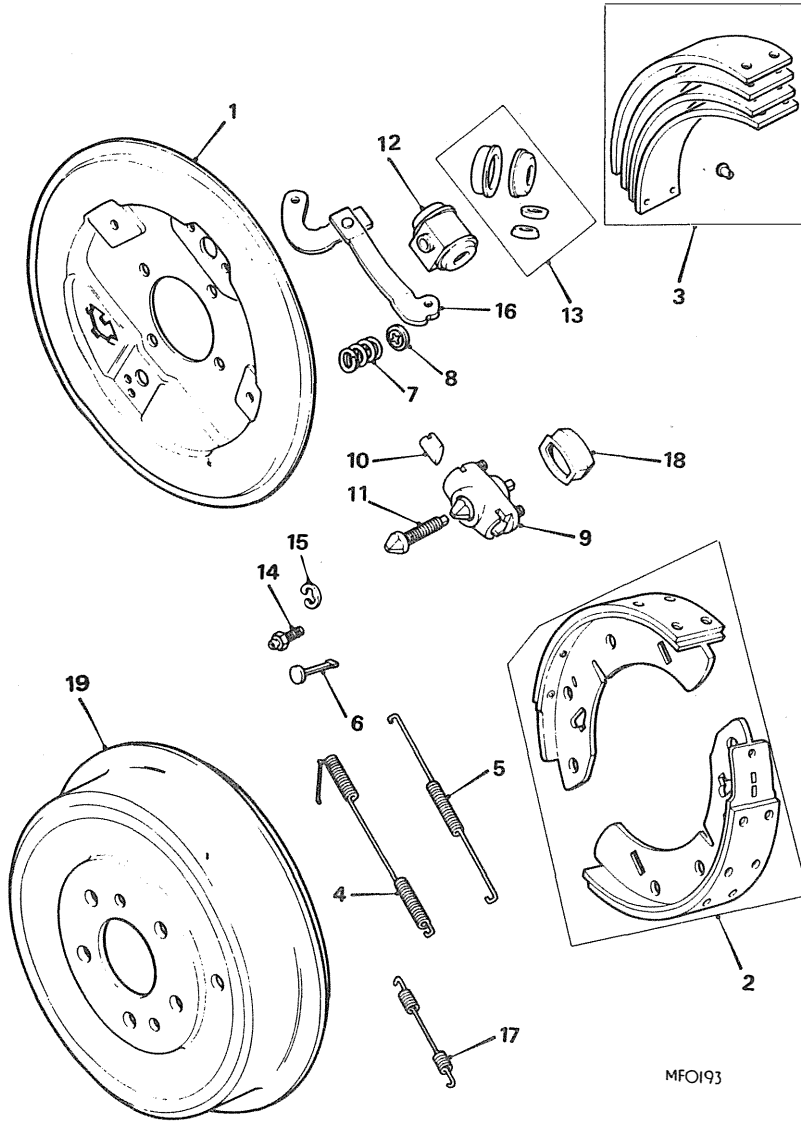
REAR BRAKES-TUBED AXLE-continued

12	GWC 1103	CYLINDER ASSEMBLY-WHEEL \$.....	2		(C)G-HN3-132916 (C)G-HD3-71933 TO 138400 (C)G-HN4-138401 ON (C)G-HD4-138401 TO 148082 Disc wheels. 142734 Wire wheels (except USA)
13	8G 8674	KIT-REPAIR-WHEEL CYLINDER \$.....	2STS		
14	17H 7623	Screw-bleed \$.....	2		
12	GWC 1122	CYLINDER ASSEMBLY-WHEEL \$.....	2		
13	8G 8741	KIT-REPAIR-WHEEL CYLINDER \$.....	2STS		} Was 37H 2311; GT Not V8
14	17H 7623	Screw-bleed.....	2		
12	GWC 1103	CYLINDER ASSEMBLY-WHEEL \$.....	2		} V8
13	8G 8674	Kit-repair \$.....	2		
15	17H 7949	Clip-spring-wheel cylinder- retaining \$.....	2		
16	17H 6787	Lever-hand brake-RH	1		(C)G-HD3-71933 TO 125373 Disc wheels (+)Wire wheels (C)G-HD3-125374 Disc wheels, (+)Wire wheels TO 138400
	17H 6788	Lever-hand brake-LH.....	1		
16	17H 2005	Lever-hand brake-RH \$.....	1		(C)G-HN3-132463 Disc wheels TO 138400 (C)G-HN4,G-HD4- 138401 ON (C)G-D2D1-101 ON See(1)foot of page
	37H 2006	Lever-hand brake-LH \$.....	1		
17	27H 6479	Spring-pull-off-hand brake lever \$.....	2		
18	17H 8057	Boot-hand brake lever \$.....	2		
19	BTB 706	Drum-brake \$.....	2		
	CMZ 410	Screw.....	4		

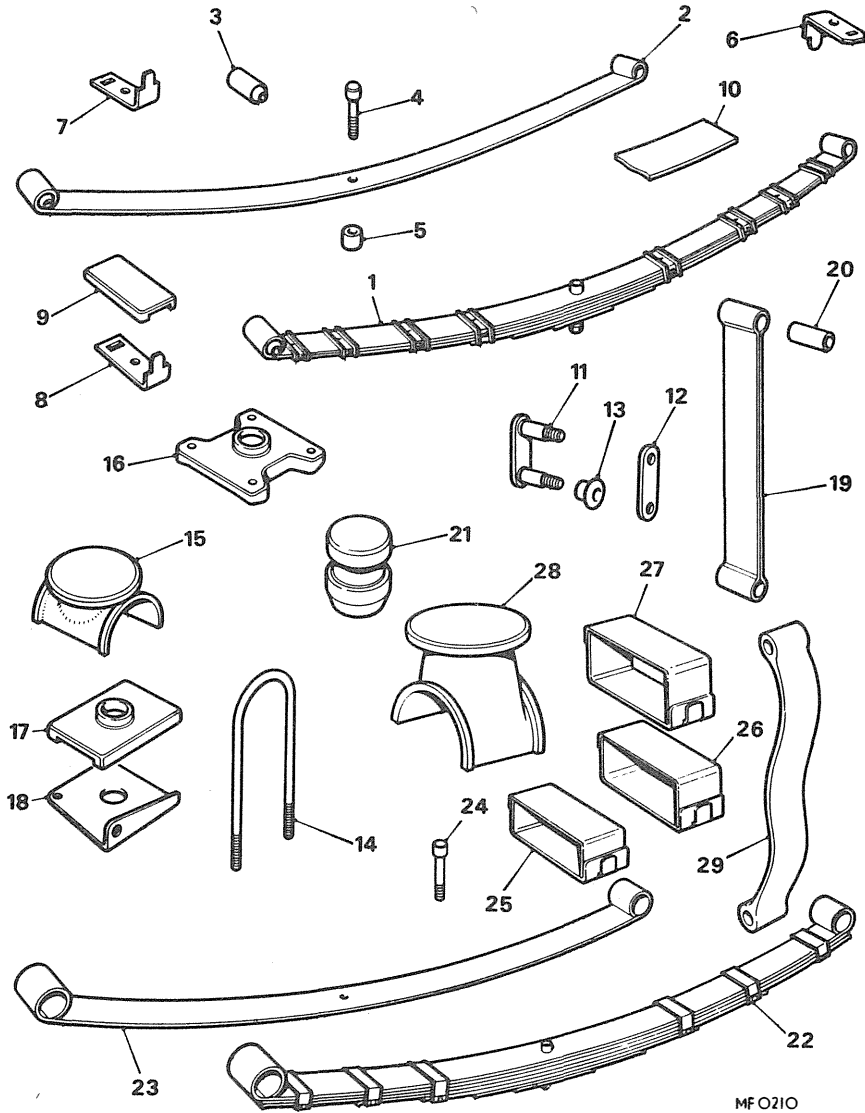
CHANGE POINTS.

(1) (C)G-HN3-132916 Disc wheels,132923 Wire wheels.TO 138400.
(C)G-HD3-71933 TO 138400.
(C)G-HN4-138401 TO 148832 Disc wheels,147573 Wire wheels(except USA).
(C)G-HD4-138401 TO 148082 Disc wheels,142734 Wire wheels(except USA).

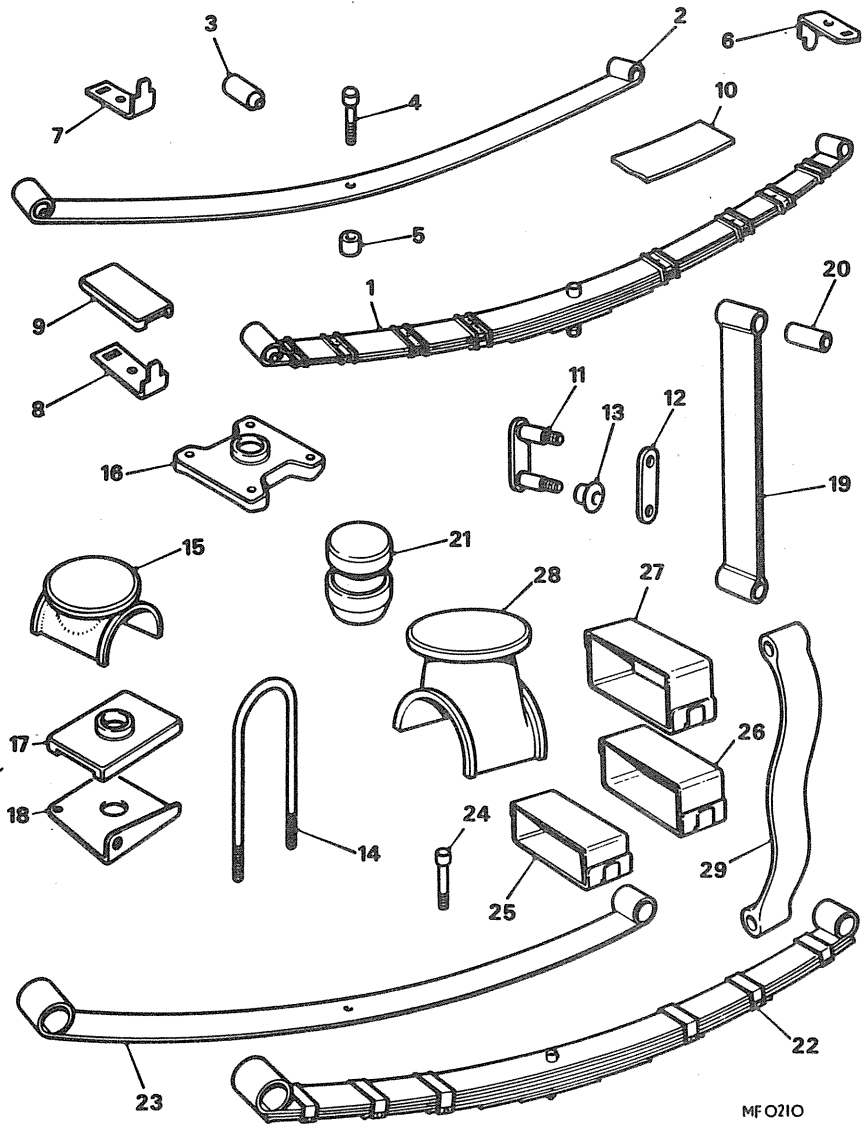
\$ This item is subject to safety regulations.(+) Change point not available.



MFO193



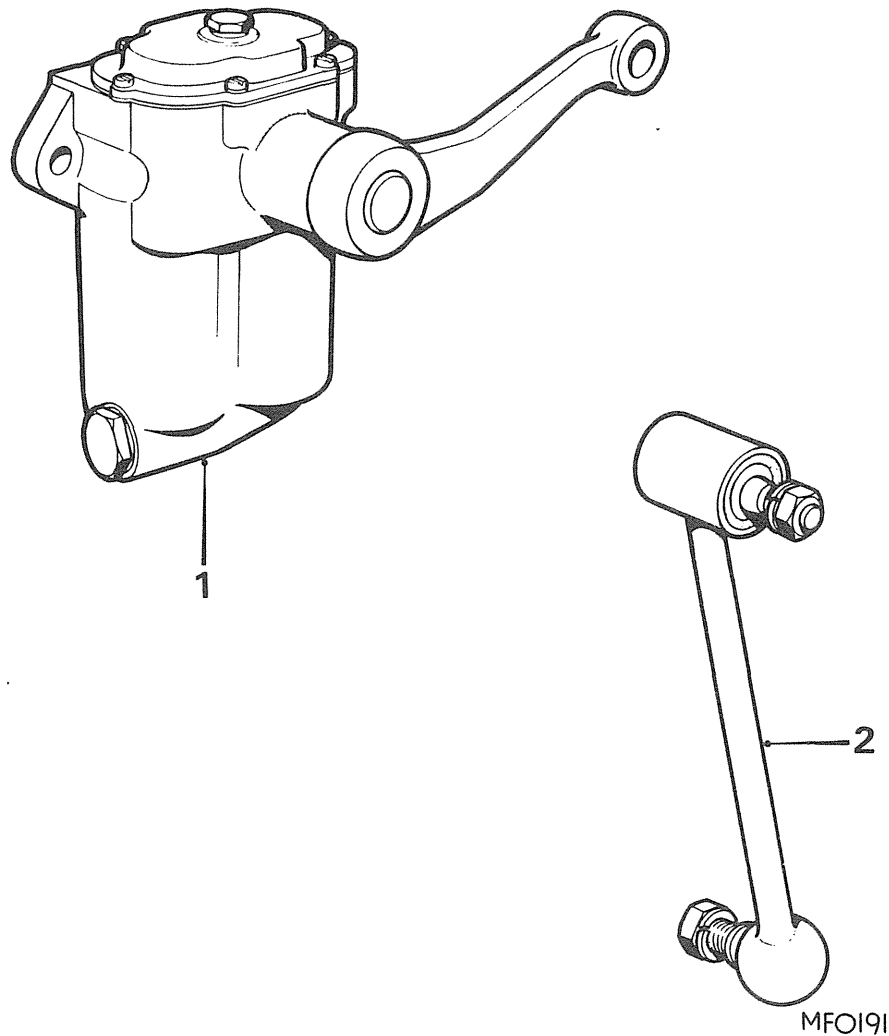
Ill. No.	Part No.	DESCRIPTION	Qty.	Change Point	REMARKS
REAR SPRING					
SPRING ASSEMBLY					
1	AHH 6453	6 leaf type-Tourer	2	(C)G-HN3-101 TO 11312	
1	AHH 7080	6 leaf type-Tourer \$	2	(C)G-HN3-11313 TO 138400	
				(C)G-HN4-138401 TO 187210	
				(C)G-HN5-187211 TO 360300	
1	AHC 31	7 leaf type GT-\$	2	(C)G-HN5-360301 TO 386795	Also fitted to Tourer for CHANGE POINT quoted.
				Use prior to BHH 1767(GT).	
1	BHH 1779	6 leaf type-tourer \$	2	(C)G-HN5-386796 ON	
1	BHH 1767	Rear-GT \$	2	(C)G-HD5-361001 ON	V8.
22	BHH 1133	Rear \$	2	Use prior to BHH 1771.	
				(C)G-D2D1-2101 ON	
1	BHH 1771	Rear \$	2	Finished at (C)G-HN5-360300	
23	BHH 1134	LEAF ASSEMBLY-MAIN \$	2	(C)G-D2D1-2100	
2	AHH 6454	LEAF ASSEMBLY-MAIN-TOURER \$	2		
3	AHH 6446	Bush	2		Not V8
4	AHH 7079	Bolt-locating \$	2		V8
24	AHH 7347	Bolt locating	2		
5	ACA 5000	Piece-distance	2		
	FNZ 105	Nut	2		
	FNZ 205	Locknut	2		
	LNZ 405	Stiffnut	2		Alternatives
6	AHH 7086	Clip-2nd leaf	8	(C)G-HN3,G-HD3-11313 TO 138400	Not V8
7	AHH 7085	Clip-3rd leaf	8	(C)G-HN4,G-HD4-138401 ON	
8	AHH 7084	Clip-4th leaf	8		
25	AHH 7344	Clip-short	8	(C)G-D2D1-101 ON	V8
26	AHH 7343	Clip-intermediate	8		
27	AHH 7342	Clip-long	8		
9	AHB 6707	Pad-leaf clip	A/R	(C)G-HN3,G-HD3-11313 TO 138400	Supplied in 25 yard(23 metre) lengths
10	AHH 7078	STRIP-INTERLEAF	A/R	(C)G-HN4-138401 TO 187210	
11	AHH 5018	Shackle-plate(with pins) \$	2	(C)G-HN5-187211 ON	
12	AHH 5019	Shackle-plate \$	2	(C)G-HD4-138401 TO 187840	
13	2A 5176	Bush-shackle plate(rubber)	8	(C)G-HD5-187841 ON	
	FNZ 106	Nut	4	(C)G-D2D1-101 ON	
	LWZ 206	Washer-spring	4		



MFO210

Ill. No.	Part No.	DESCRIPTION	Qty.	Change Point	REMARKS	
REAR SPRING-continued						
14	AHH 6452	'U'bolt	NLA] Used for vehicles WITH BANJO TYPE AXLE.] Finished for TOURER AT(C) 386795] Commenced for tourer at(C) 386796	
	LNZ 206	Nut	8			
16	ACG 5001	Plate-spring-locating	4	(C)G-HN3-101 TO 132915 Disc wheels		
17	ACG 5002	Pad-spring seating	4	132923 Wire wheels		
18	AHH 5067	Bracket-shock absorber-RH	1			
	AHH 5068	Bracket-shock absorber-LH	NLA			
14	AHC 109	'U'bolt \$	4	(C)G-HN3-132916 Disc wheels, 132924 Wire wheels TO 138400 (C)G-HD3-101 TO 138400		
14	AHH 7333	'U'bolt	4	(C)G-HN4-138401 TO 187210		Not V8 V8
	GHF 223	Nut	8	(C)G-HN5-187211 TO 410000 (C)G-HD4-138401 TO 187840		
15	AHH 7335	Pedestal-bump rubber	2	(C)G-HD5-187841 TO 410350 (C)G-D2D1-101 TO 2100		
28	BHH 1030	Pedestal-bump rubber	2	(C)G-D2D1-2101 TO 2903		
16	AHH 7334	Plate-spring locating	2			
17	ACG 5002	Pad-spring seating	4			
18	AHH 7337	Bracket-shock absorber-RH	1			
	AHH 7338	Bracket-shock absorber-LH	1			
15	AHH 7335	Pedestal-bump rubber	2		Use prior to BHH 989	
	BH 607241	Pin-shackle-front end	2		Not V8	
	FNZ 107	Nut	2			
	LWZ 207	Washer-spring	2			
19	AHH 6355	Strap-rebound	2	(C)G-HN5-360301 TO 410000.	V8	
29	BHH 989	Strap-rebound	2	(C)G-HD5-361001 TO 410000		
20	AHH 6162	Tube-distance-strap	2			
	FNZ 103	Nut	2			
	PWZ 206	Washer-plain	2			
	LWZ 206	Washer-spring	2			
	HBZ 515	Bolt	2			
	FNZ 105	Nut	2			
	WL 600051	Washer-spring	2			
21	AHH 9158	Bump rubber	2			

\$ This item is subject to safety regulations



Ill. No.	Part No.	DESCRIPTION	Qty.	Change Point	REMARKS
REAR SHOCK ABSORBERS					
1	GSA 168	Absorber-shock-rear-RH (less link) \$	1	Use prior to GSA 367/8	Not V8
	GSA 169	Absorber-shock-rear-LH (less link) \$	1		
2	97H 2031	LINK ASSEMBLY \$	2		
	FNZ 507	Nut	2		
	LWZ 307	Washer-spring	2		
	FNZ 508	Nut	2		
	LWZ 308	Washer-spring	2		
	GSA 328	Absorber-shock-rear-RH (less link) \$	1		
	GSA 329	Absorber-shock-rear-LH (less link) \$	1		
2	37H 8075	Link	2		
	17H 3563	Plug-filler	2		
1	GSA 368	Absorber shock-rear-RH (less link) \$	1		
	GSA 367	Absorber-shock-rear-LH (less link)	1		
2	37H 8778	Link	2		
	HBZ 726	Bolt	4/2		
	BH 607241	Bolt	2		
	FNZ 107	Nut	4		
	LWZ 207	Washer-spring	4		
	PWZ 107	Washer-plain	8		

Quantity reduced
at (C)G-HN5-
360301.(C)G-HD5-
361001.(C)G-D2D1-
2101