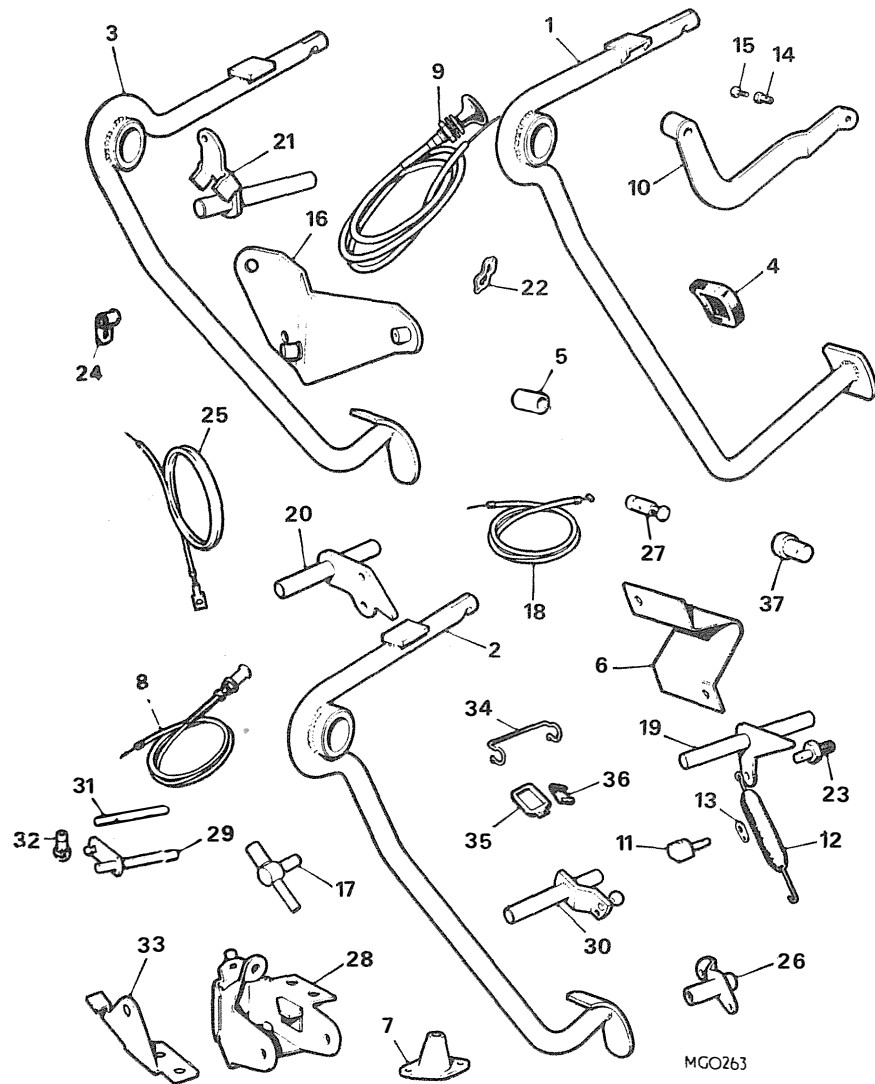


Ill. No.	Part No.	DESCRIPTION	Qty.	Change Point	REMARKS
----------	----------	-------------	------	--------------	---------

**ACCELERATOR PEDAL-CHOKE CONTROL-ALL VERSIONS-EXCEPT V8**

<b>PEDAL-ACCELERATOR</b>					
1	AHH 6501	LHD	NLA	(C)G-HN3,G-HD3-101 TO 138400	
2	AHC 135	RHD	1	] Use prior to BHH 1692/1106 (C)G-HN5-360301 ON (C)G-HD5-361001 ON (C)G-HN3,G-HD3-101 TO 138400	
3	AHC 647	LHD \$	1		
	BHH 1692	RHD	1		
	BHH 1106	LHD	1		
4	GPR 105	Pad(rubber)-pedal	1		
5	AHH 6504	Tube-distance	1		
	HBZ 511	Bolt	1		
	WL 600051	Washer-spring	1		
	LNZ 405	Stiffnut	1		
	WA 108051	Washer-plain(under head of bolt)	1		
6	AHB 7162	Stop-pedal-RHD	1		] LHD when weld NUT NOT FITTED.
	PMZ 410	Screw	2		
	LWZ 204	Washer-spring	2		
	HZS 412	Screw	1		
	FNZ 104	Nut	1		
7	AHH 5308	Guide-accelerator cable	1		
	PMZ 307	Screw	2		
	LWZ 203	Washer-spring	2		
8	BHH 526	Cable-choke control \$	1		
				Use prior to BHH 650 and 651	] N.America,Sweden AND Germany.
				Use prior to BHH 651	
9	BHH 653	Cable-choke control	1		] UK
9	BHH 651	Cable-choke control	1	(C)G-HN5,H-HD5-332033 TO 360300 (Tourer)and 361000 (GT)	
9	BHH 650	Cable-choke control	1		] N.America,sweden, Germany and Norway Not used with Automatic choke.
9	BHH 650	Cable-choke control	1	(C)G-HN5,G-HD5-258001 TO 360300 (Tourer)-361000(GT) (C)G-HN5-360301 ON (C)G-HD5-361001 ON	
10	AHH 6731	Bracket-choke control	1		] (C)G-HN3,G-HD3-101 TO 138400 (C)G-HN4-138401 TO 187210 (C)G-HN5-187211 TO 332032 UK,258000 Not UK, (C)G-HD4-138401 TO 187840 (C)G-HD5-187841 TO 332032 UK 258000 Not UK
11	AHH 6734	Abutment-outer cable	1		
12	AEC 2075	Spring-cable return	1		
13	AAA 649	Washer-tab	1		
14	AHA 6367	Pin-inner cable to bracket	1		
15	53K 3503	Screw	1		
16	BHH 558	Bracket-choke and accelerator cables	1		
	HZS 404	Screw	1		
	WL 600041	Washer	1		
	NH 604041	Nut	1		
17	BHH 564	Abutment-choke cable	1		
	WA 702101	Washer-plain	1		

\$ This item is subject to safety regulations



Ill. No.	Part No.	DESCRIPTION	Qty.	Change Point	REMARKS
----------	----------	-------------	------	--------------	---------

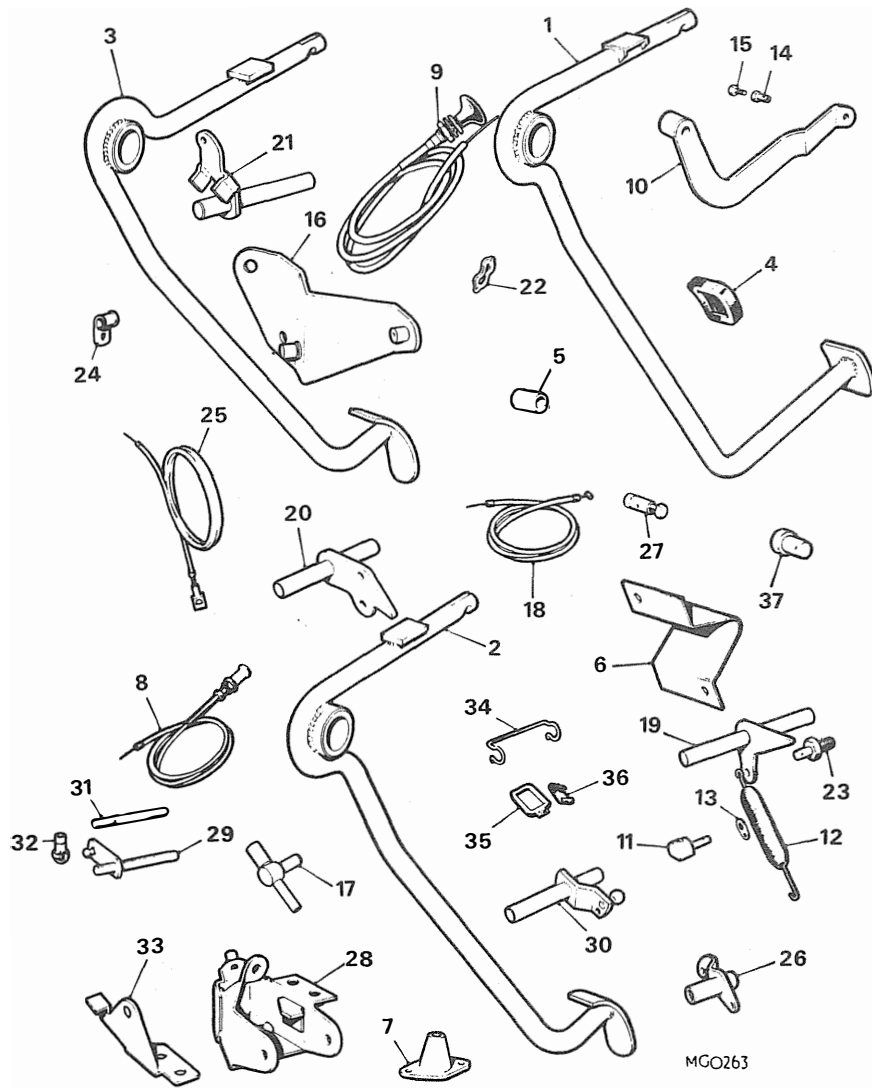
**ACCELERATOR CABLE AND FITTINGS-MANUAL NOT V8**

<b>CABLE-ACCELERATOR</b>					
18	AHH 6997	RHD .....	1	] (C)G-HN3,G-HD3-101 TO 138400	Use prior to BHH 1648/9(except automatic)
18	AHH 6998	LHD \$ .....	NLA		
18	AHH 8462	RHD .....	1		
18	AHH 8463	LHD \$ .....	1		
	BHH 1648	RHD .....	1	] (C)G-HN5-360301 ON	Single Zenith carburetter.
	BHH 1649	LHD \$ .....	1		
	BHH 1782	LHD-USA \$ .....	1		
19	12H 715	Lever and spindle-accelerator .....	1	] (C)G-HN3,G-HD3-101 TO 138400 (C)G-HN4-138401 TO 187210 (C)G-HN5-187211 TO 332032 UK,258000 Not UK (C)G-HD4-138401 TO 187840 (C)G-HD5-187841 TO 332032 UK, 258000 Not UK. (C)G-HN5,G-HD5-332033 ON,UK 258001 Not UK.	] Except single Zenith carburetter Single Zenith CARBURETTER.
12	AEC 2075	Spring-return .....	2		
20	BHH 631	Lever and spindle-accelerator .....	1		
21	BHH 633	Lever-choke .....	1		
12	AEC 2075	Spring-choke return .....	1		
22	ACA 5256	Washer-anti-rattle-throttle cable to carburetter lever.....	1		
23	ACC 5062	Pin-accelerator lever .....	1		
	PWZ 203	Washer-plain.....	1		
	FNZ 104	Nut .....	1		
	PWZ 104	Washer-plain.....	1		
12	AEC 2075	Spring-throttle return \$ .....	2		
12	BHH 1781	Spring-throttle return \$ .....	2		
	BHH 1793	Lever-throttle spring.....	1		
24	PCR 307	Clip .....	1		
24	PCR 407	Clip .....	1		
	PMZ 307	Screw-RHD .....	1		
	PWZ 103	Washer-plain .....	1		
	LWZ 203	Washer-spring .....	1		
	FNZ 103	Nut .....	1		

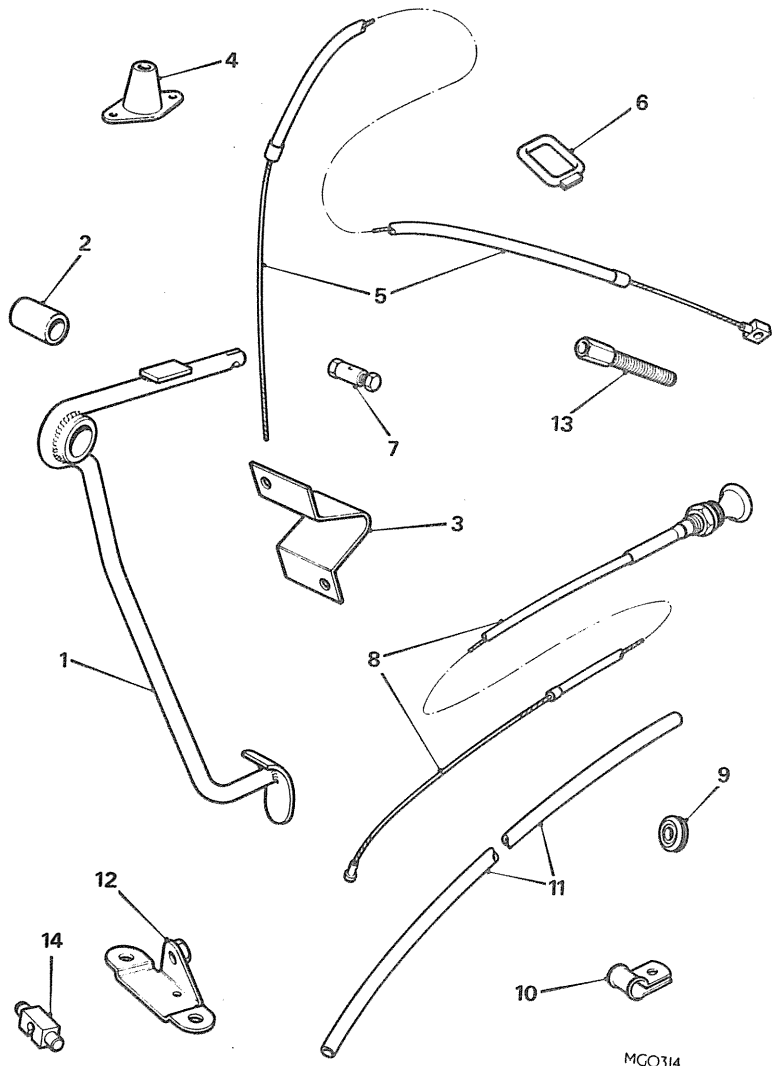
III. No. | Part No. | ||||| DESCRIPTION | Qty. | Change Point | REMARKS

**ACCELERATOR CABLE AND FITTINGS-AUTOMATIC-NOT V8.**

25	AHH 8747	Cable-accelerator-RHD .....	1	(C)G-HN3-101 TO
	AHH 8748	Cable-accelerator-LHD \$ .....	1	138400
26	12H 2602	Lever and spindle-accelerator .....	NLA	(C)G-HN4-138401
12	AEC 2075	Spring-accelerator return .....	1	TO 187210
27	AHC 284	Pin-cable .....	1	(C)G-HN5-187211
28	12H 2599	Bracket .....	1	TO 328100
	HBZ 422	Bolt .....	1	(C)G-HD3-101 TO
	LNZ 204	Nut .....	1	138400
	LWZ 204	Washer-spring .....	1	(C)G-HD4-138401
				TO 187840
				(C)G-HD5-187841
				TO 328800
29	12H 2607	Lever and spindle .....	1	Use prior to
				BHH 567
30	BHH 567	Lever and spindle .....	1	(C)G-HN5,G-HD5-
				258001 ON
31	12H 2612	Rod-control-accelerator .....	NLA	
32	AHB 9898	End-ball joint .....	2	(C)G-HN3-101 TO
	FNZ 103	Nut-lock .....	2	138400
	LNZ 203	Nut-lock .....	1	(C)G-HN4-138401 TO
	LWZ 203	Washer-spring .....	1	187210
33	12H 2610	Bracket-kickdown cable .....	1	(C)G-HN5-187211
	HZS 404	Screw .....	1	TO 328100
	LWZ 204	Washer-spring .....	1	(C)G-HD3-101 TO
34	AHC 279	Clip-kickdown cable adjuster .....	1	138400
35	BHA 4753	Clip-kickdown cable to	1	(C)G-HD4-138401
		accelerator cable-LHD .....	1	TO 187840
	LNZ 204	Nut .....	1	(C)G-HD5-187841
	LWZ 405	Washer-shakeproof .....	1	TO 328800
	PWZ 103	Washer-plain .....	1	
37	CLZ 309	Pin-clevis .....	1	
	PWZ 103	Washer-plain .....	1	
	HZS 506	Bolt-relay bracket to manifold .....	1	
	LWZ 305	Washer .....	2	



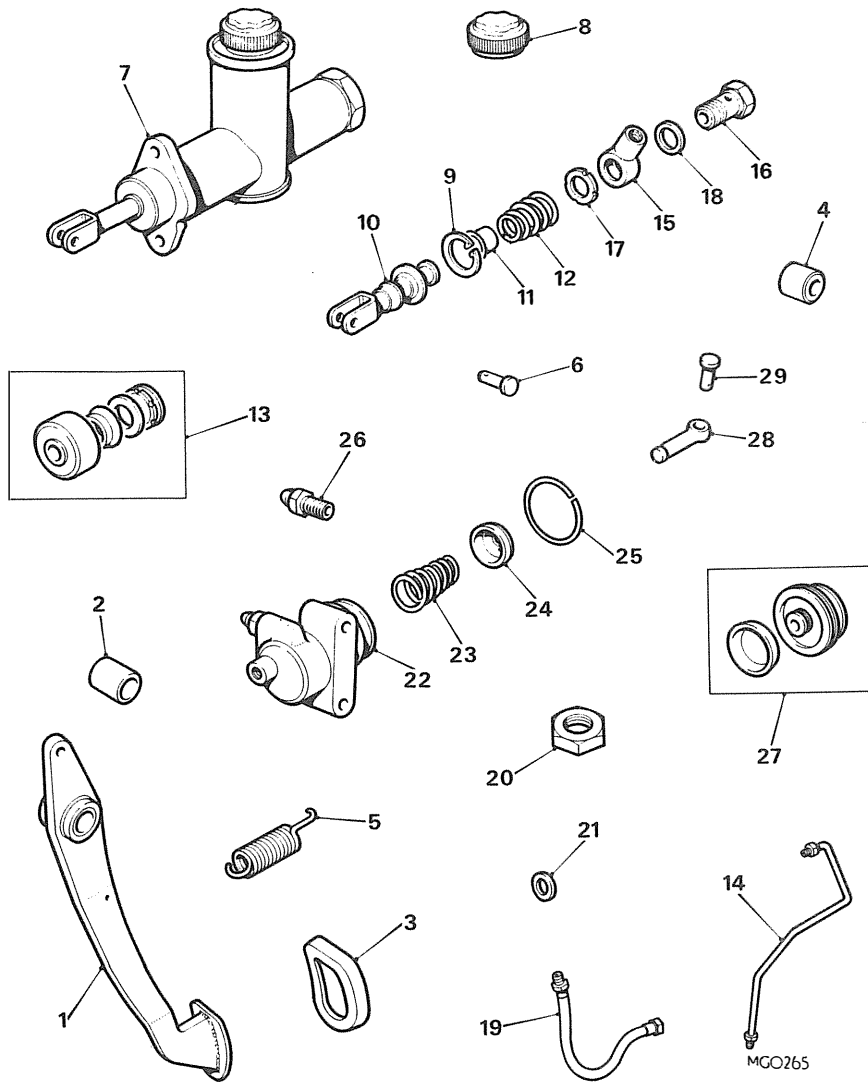
\$ This item is subject to safety regulations.



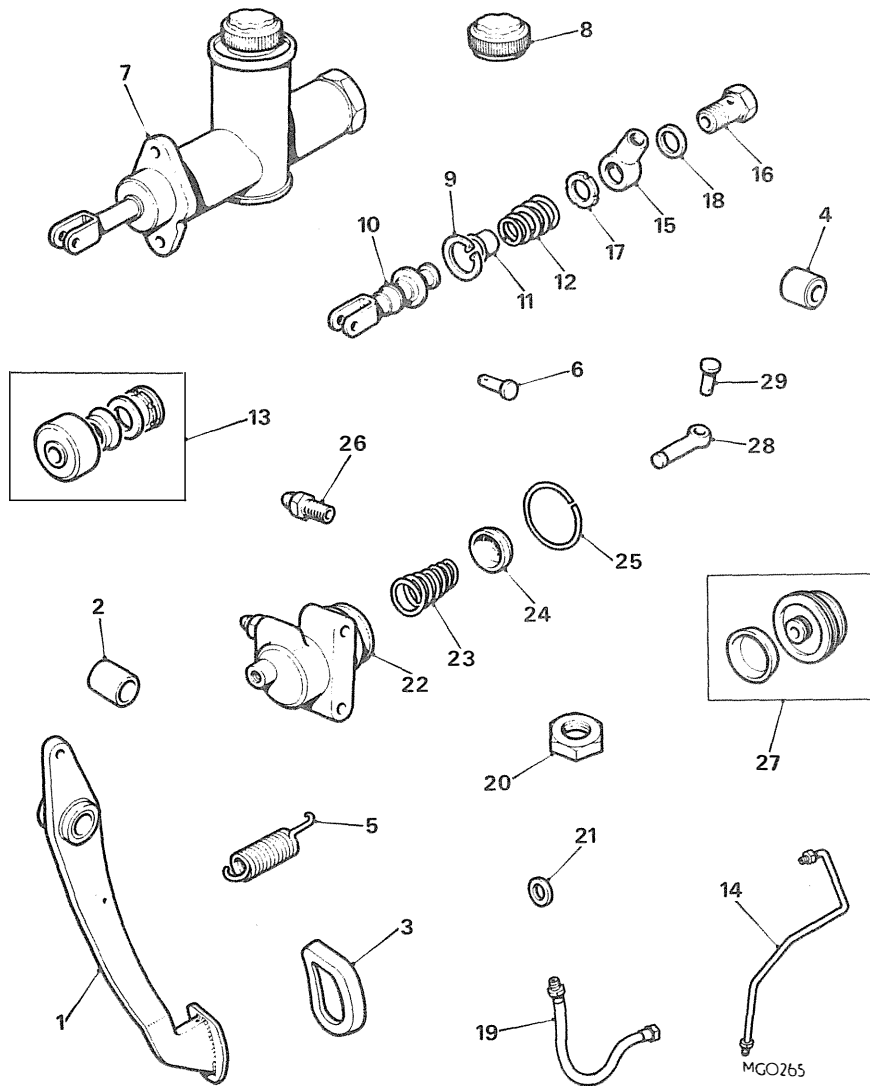
III. No.	Part No.	DESCRIPTION	Qty.	Change Point	REMARKS
----------	----------	-------------	------	--------------	---------

**ACCELERATOR PEDAL AND CABLE-CHOKE CONTROL-V8.**

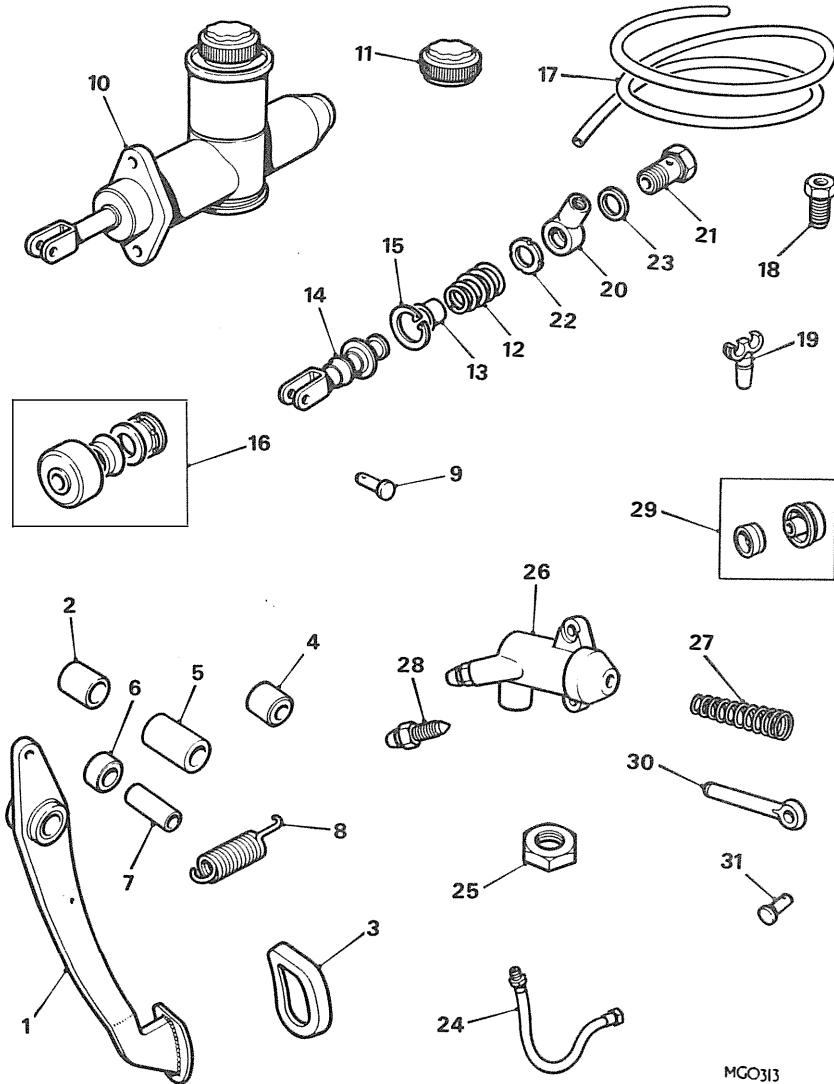
1	AHC 135	Pedal-accelerator .....	1		
2	AHH 6504	Tube-distance .....	1		
	HBZ 511	Bolt .....	1		
	WL 600051	Washer-spring .....	1		
3	AHB 7162	Stop-accelerator-pedal .....	1		
	PMZ 410	Screw-stop to pedal box .....	2		
	LWZ 204	Washer-spring .....	2		
	HZS 412	Screw .....	1		
	FNZ 104	Nut .....	1		
4	AHH 5308	Guide-accelerator cable .....	1		
	PMZ 307	Screw .....	2		
	LWZ 203	Washer-spring .....	2		
5	BHH 1120	Cable-accelerator \$ .....	1		
7	AHC 284	Pin-accelerator cable .....	1		
8	BHH 1121	Cable-choke .....	1		
9	RFR 503	Grommet .....	1		
10	PCR 307	Clip-choke cable to air box .....	1		
	LWZ 203	Washer-spring .....	1		
	FNZ 103	Nut .....	1		
12	BHH 1057	Bracket-accelerator cable .....	1		
	SH 605041	Screw-bracket to carburetter adaptor .....	2		
	WL 600051	Washer-spring .....	2		
	NH 604041	Locknut .....	1		
13	BHH 1059	Adjuster-accelerator cable .....	1		
14	BHH 1056	Trunnion-choke cable .....	1		



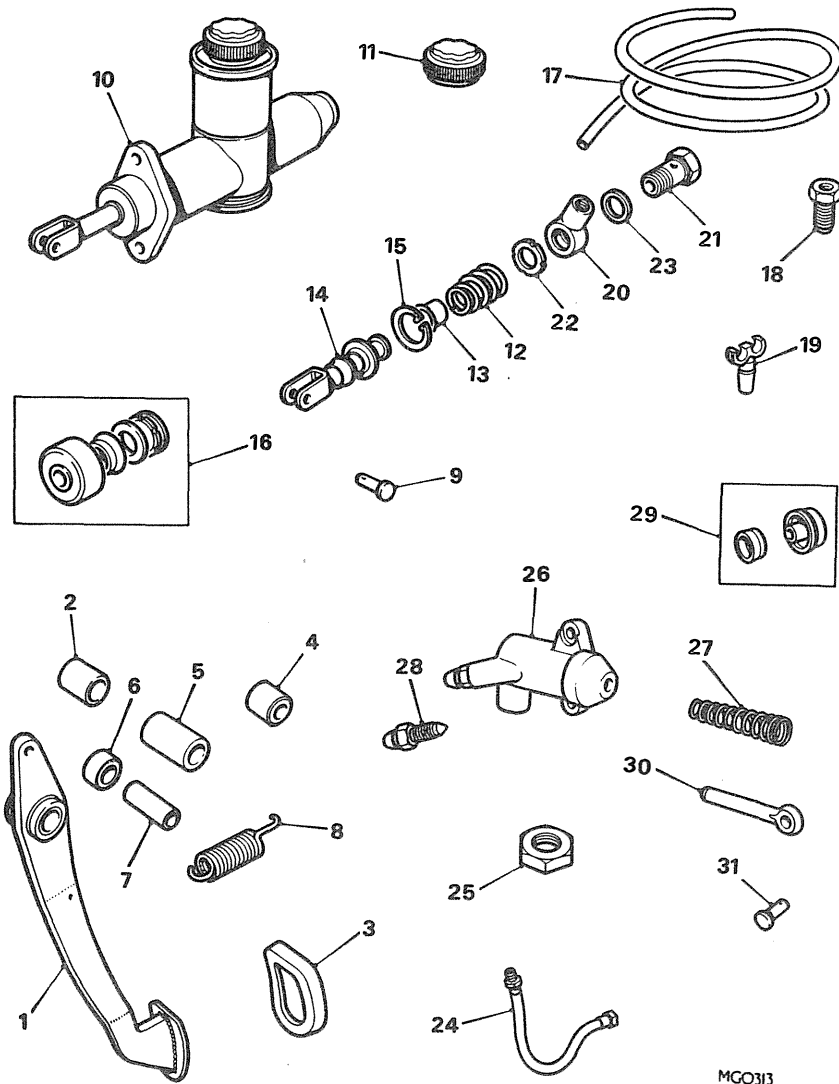
Ill. No.	Part No.	DESCRIPTION	Qty.	Change Point	REMARKS
<b>CLUTCH PEDAL-CLUTCH MASTER AND OPERATING CYLINDERS-NOT V8.</b>					
1	AHH 6154	PEDAL ASSEMBLY-CLUTCH-RHD \$	1		Except USA when direct acting servo is fitted.
	AHH 6505	PEDAL ASSEMBLY-CLUTCH-LHD \$	1		
	BHH 1309	PEDAL ASSEMBLY-CLUTCH-LHD \$	1	Use prior to BHH 1901 (C)G-HN5-386601 ON	USA only with direct acting servo.
	BHH 1901	PEDAL ASSEMBLY-CLUTCH-LHD \$	1		Use with AHH 6154 and AHH 6505.
2	AAA 4129	Bush	1		
3	AHH 5100	Pad(rubber)	1		Use with BHH 1309.
4	AHH 7201	Tube-distance	1		
	BHH 1099	Tube-distance	1		Use with BHH 1309.
	BHH 1098	Spacer	NLA		
	HBZ 616	Bolt	1		
	LWZ 206	Washer	1		
5	AAA 1628	Spring-pull-off-pedal	1		
6	CLZ 514	Pin-clevis	1		
	PWZ 105	Washer-plain	1		
7	AHH 6553	CYLINDER ASSEMBLY-MASTER	1		(C)G-HN3,G-HD3-101 TO 138400
8	17H 6861	Cap-filler	1		
9	17H 7560	Circlip	1		(C)G-HN4-138401 TO 187210
10	17H 7985	Push-rod	1		
11	17H 7554	Retainer-spring	1		(C)G-HN5-187211 TO (+).
12	17H 7981	Spring	1		
13	8G 8424	KIT-REPAIR-MASTER CYLINDER	1		(C)G-HD4-138401 TO 187840
7	BHA 4667	CYLINDER ASSEMBLY-MASTER	1		
8	17H 6861	Cap-filler	1		(C)G-HD5-187841 TO (+).
12	27H 7751	Spring-piston return	1		
11	17H 7554	Retainer-spring	1		Identified by Two concentric Rings.
10	17H 7985	Push-rod	1		
9	17H 7560	Circlip-push-rod retaining	1		(C)G-HN5,G-HD5(+) TO 410000(Tourer) 410350(GT).
13	8G 8424	KIT-REPAIR	1		
7	AAU 7152	CYLINDER ASSEMBLY-MASTER	1		(C)G-HN3,G-HD3-101 TO 138400
8	513213	Cap-filler	1		
9	17H 7560	Circlip	1		(C)G-HN5,G-HD5(+) TO 410000(Tourer) 410350(GT).
10	17H 7985	Push-rod	1		
12	17H 8070	Spring	1		(C)G-HN3,G-HD3-101 TO 138400
13	BHM 7127	Kit-repair	1		
	HZS 507	Screw	1		
	HZS 508	Screw	1		
	HZS 507	Screw	2		
	WL 600051	Washer-spring	2		
	FNZ 105	Nut	2		



III. No.	Part No.	DESCRIPTION	Qty.	Change Point	REMARKS
		<b>CLUTCH PEDAL-CLUTCH MASTER AND OPERATING CYLINDERS-NOT V8-continued.</b>			
	AHH 6362	Pipe-master cylinder-86.4cm (34")long-RHD \$		NLA	] Now make from pipe 37H 7148 M With 2 Off nut BCA 4370 Supplied in 7 metre(25')rolls.
	ACB 8754	Pipe-master cylinder-160cm (63")long-LHD \$		NLA	
	37H 7148 M	Pipe-clutch-6.35mm(.25")O/D		A/R	
	BCA 4370	Nut-tube-internal		A/R	
	15 BHA 4310	Connection-banjo		1	
	16 11D 5264	Bolt-banjo		1	
	17 233220	Gasket		1	
	18 3H 550	Gasket		1	
	19 ACC 5509	Hose-clutch		1	
	20 2K 8686	Locknut-hose		1	
	LWZ 510	Washer-shakeproof		1	
	21 3H 550	Gasket-hose to operating cylinder		1	
	22 BMK 192	CYLINDER ASSEMBLY-CLUTCH OPERATING		1	
	23 7H 7959	Spring-cup filler		NLA	
	24 7H 7560	Filler-piston cup		1	
	25 7H 7956	Clip-boot(large)		1	
	26 3H 554	Screw-bleeder		NLA	
	26 606733	Screw-bleeder		1	Use 606733
	27 8G 8420	KIT-REPAIR-OPERATING CYLINDER		1	
	28 13H 21	Push-rod-operating cylinder		1	
	SH 506081	Bolt		2	
	LWZ 206	Washer-spring		2	
	29 2K 5622	Pin-clevis-push-rod		1	
	PWN 105	Washer-plain		1	



Ill. No.	Part No.	DESCRIPTION	Qty.	Change Point	REMARKS
<b>CLUTCH PEDAL-CLUTCH MASTER AND OPERATING CYLINDERS-V8.</b>					
1	AHH 6154	PEDAL ASSEMBLY-CLUTCH \$	1		
2	AAA 4129	Bush	1		
3	AHH 5100	Pad(rubber)	1		
4	AHH 7201	Tube-distance	1		
	PWZ 206	Washer-plain	2		
	BH 606321	Bolt-fulcrum	1		
	LWZ 206	Washer-spring	1		
	FNZ 106	Nut	1		
5	AHH 6063	Spacer	1		
8	AAA 1628	Spring-pull off	1		
9	CLZ 514	Pin-clevis	1		
	PWZ 105	Washer-plain	1		
10	BHA 5217	CYLINDER ASSEMBLY-MASTER	1		
11	17H 6861	Cap-filler	1		
12	27H 7751	Spring-piston return	1		
13	17H 7554	Retainer	1		
14	37H 8090	Push-rod	1		
15	17H 7560	Circlip	1		
16	8G 8730	Kit-repair-master cylinder	1		
	HZS 508	Screw	2		
	WL 600051	Washer-spring	2		
	FNZ 105	Nut	2		
	AHH 6362	Pipe-master cylinder to hose-86.4cm(34")long \$	NLA		Make from pipe 37H 7148 M with 2 off nut BCA 4370. Supplied in 7 metre(25')rolls.
17	37H 7148 M	Pipe-clutch.25"(6.35mm)O/D	A/R		
18	BCA 4370	Nut-tube-internal	2		
19	629596	Clip-double-clutch and petrol pipes to bulkhead	2		
20	BHA 4310	Connection-banjo	1		
21	11D 5264	Bolt	1		
22	233220	Gasket	1		
23	3H 550	Gasket	1		
24	ACC 5509	Hose-clutch	1		
25	2K 8686	Locknut	1		
	LWZ 510	Washer	1		



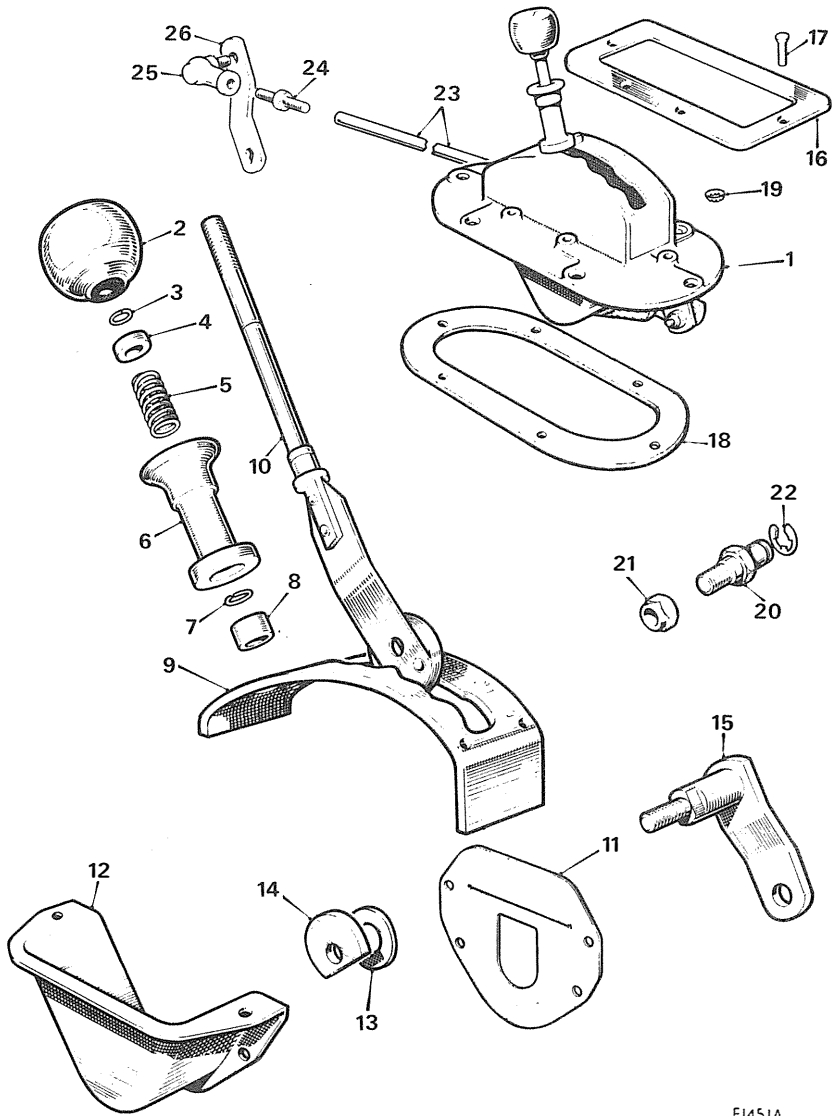
MGO313

Ill. No.	Part No.	DESCRIPTION	Qty.	Change Point	REMARKS
----------	----------	-------------	------	--------------	---------

**CLUTCH PEDAL-CLUTCH MASTER AND OPERATING CYLINDERS-V8-continued.**

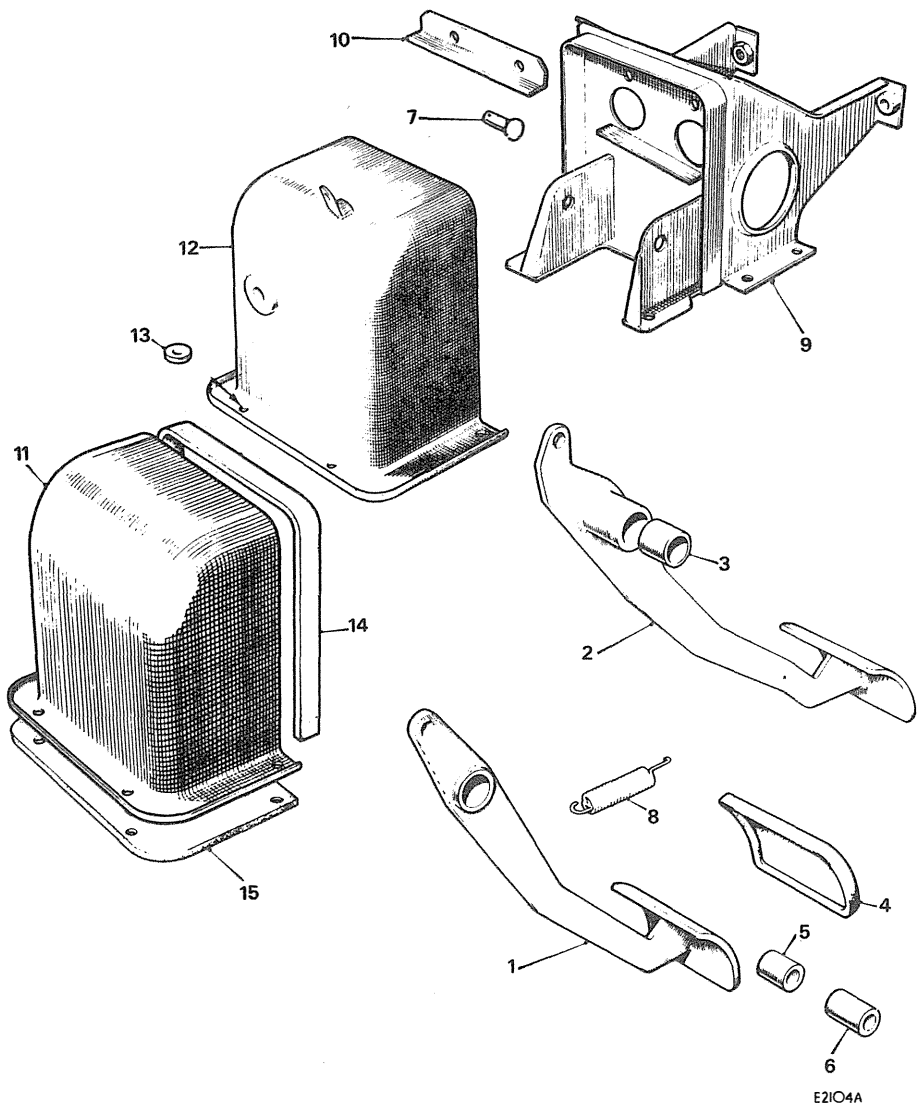
26	13H 3654	CYLINDER ASSEMBLY-CLUTCH			
		OPERATING .....	1		
27	17H 7580	Spring .....	1		
28	3H 2428	Screw \$ .....	1		
29	18G 8207	Kit-repair-operating cylinder .....	NLA		Use BHM 7061.
29	BHM 7061	Kit-repair-operating cylinder .....	1		
30	13H 3655	Push-rod .....	1		
	ZCS 610	Screw .....	2		
	LWZ 206	Washer-spring .....	2		
31	2K 5622	Pin-clevis .....	1		
	PWN 105	Washer .....	1		





E1451A

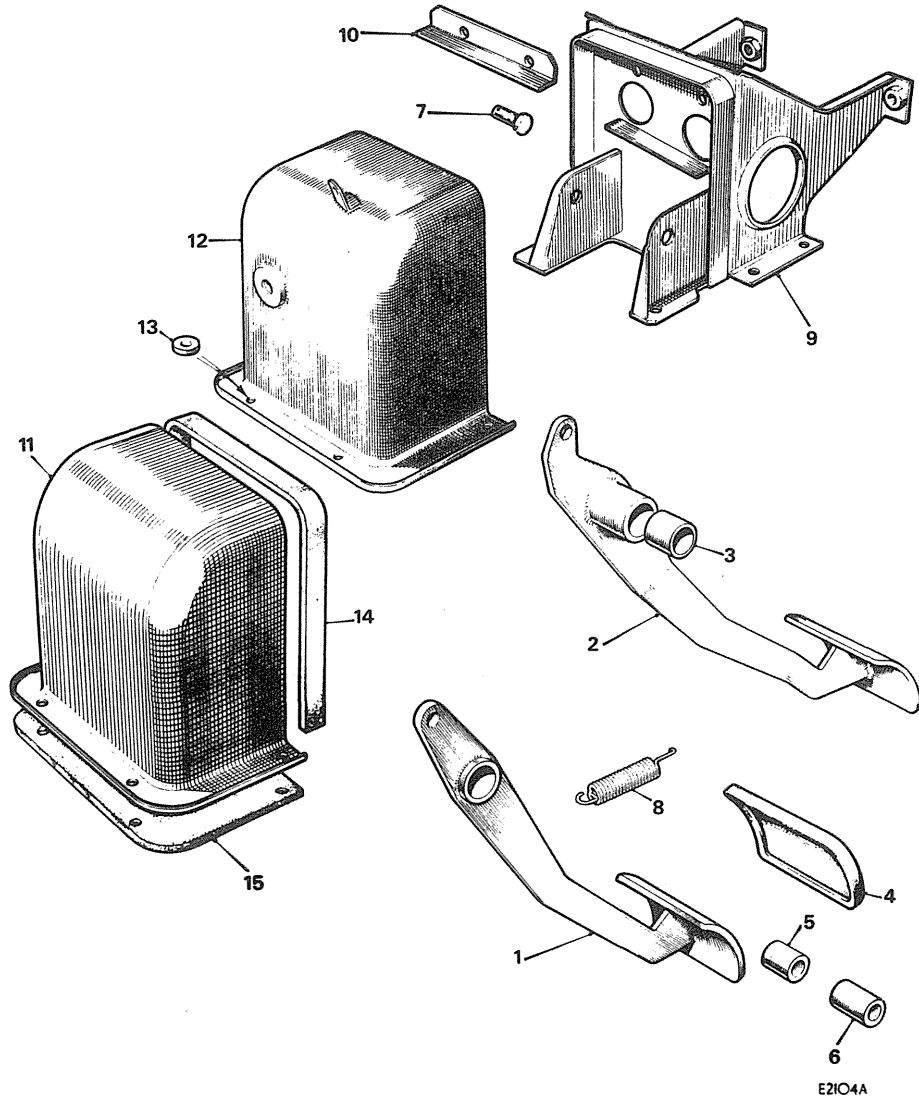
III. No.	Part No.	DESCRIPTION	Qty.	Change Point	REMARKS
<b>GEAR CONTROLS-AUTOMATIC.</b>					
1	AHH 8548	SELECTOR ASSEMBLY .....	1		
2	AHC 195	Knob-lever .....	1		
3	BHA 4568	Circlip-knob .....	1		
3	13H 5837	Circlip-knob .....	1		
4	AHC 196	Washer .....	1		
5	AHC 197	Spring-return-pillar .....	1		
6	AHC 198	Pillar .....	1		
7	AAK 379	Circlip .....	1		
8	AHC 199	Roller .....	1		
9	AHH 8511	Plate-gate .....	NLA		
10	BHH 263	Lever-selector .....	1		Use with 1 off BHH 264 washer and 1 off 13H 5837 circlip.
11	AHC 207	Seal-selector control .....	1		
12	AHC 208	Cover-selector .....	1		
13	AHC 209	Washer(nylon) .....	NLA		(C)G-HN3-101 TO 138400
14	AHC 210	Washer-special .....	NLA		(C)G-HN4-138401 TO 187210
	WL 600051	Washer-spring .....	1		(C)G-HN5-187211 TO 328100
	LNZ 205	Nut .....	1		(C)G-HD3-101 TO 138400
15	AHH 8514	Pin-fulcrum .....	NLA		(C)G-HD4-138401 TO 187840
	AWZ 109	Washer-anti-rattle .....	1		(C)G-HD5-187841 TO 328800
	PMZ 308	Screw .....	4		
	LWZ 203	Washer-spring .....	4		
	FNZ 103	Nut .....	4		
16	AHC 215	Retainer-carpel .....	1		
17	AHC 216	Screw-retainer .....	6		
18	AHC 188	Seal-selector housing .....	NLA		
	CMZ 410	Screw .....	6		
19	BHA 4566	Washer-shakeproof .....	6		
20	AHC 225	Trunnion-lever to cable .....	1		
21	53K 1662	Nut-locking .....	1		
	AWZ 106	Washer-anti-rattle .....	NLA		
22	BHA 4567	Circlip .....	1		
23	AHH 8544	Rod-selector .....	1		
24	AHH 8547	Adjuster .....	1		
25	11H 670	Joint-ball .....	1		
	FNZ 205	Nut-lock-RHT .....	1		
	FNZ 2205	Nut-lock-LHT .....	1		
26	AHH 8541	Lever-gearbox .....	NLA		
	FNZ 105	Nut .....	1		
	WL 600051	Washer-spring .....	1		
	FNZ 105	Nut .....	1		
	LWZ 305	Washer-spring .....	1		



E2104A

Ill. No.	Part No.	DESCRIPTION	Qty.	Change Point	REMARKS
<b>BRAKE AND PEDAL LINKAGE-NOT V8.</b>					
1	AHH 6153	PEDAL ASSEMBLY-BRAKE-RHD	1	(C)G-HN3,G-HD3-101 TO 138400	] Manual.
	AHH 6506	PEDAL ASSEMBLY-BRAKE-LHD	1		
1	AHH 8522	PEDAL ASSEMBLY-BRAKE-RHD \$	1		
	AHH 8523	PEDAL ASSEMBLY-BRAKE-LHD \$	1		
	BHH 1100	PEDAL ASSEMBLY-BRAKE-LHD \$	1	(C)G-HN4-138401 TO 187210	] Automatic
	BHH 1892	PEDAL ASSEMBLY-BRAKE-LHD \$	1	(C)G-HN5-187211 ON	
2	AHH 8538	PEDAL ASSEMBLY-BRAKE-RHD \$	1	(C)G-HD4-138401 TO 187840	] Dual line brakes system with servo.
	AHH 8539	PEDAL ASSEMBLY-BRAKE-LHD \$	1	(C)G-HD5-187841 ON	
3	AAA 4129	Bush	1	Use prior to BHH 1892	] Automatic
	BHH 1101	Bush	NLA	(C)G-HN5-386601 ON	
4	AHH 5100	Pad-pedal(rubber)	1		] Automatic
4	ACC 8592	Pad-pedal(rubber)	1		
5	AHH 7201	Tube-distance-pedal \$	1		] Automatic Except USA-dual LINE BRAKES WITH SERVO.
5	AHH 8540	Tube-distance-pedal \$	1		
	HBZ 632	Bolt	1		] USA-dual line BRAKES WITH SERVO.
	LWZ 206	Washer-spring	1		
	FNZ 106	Nut	1		] Quantity reduced for automatic.
6	AHH 6063	Spacer-pedal \$	1		
	HBZ 614	Bolt	1		] USA-dual line BRAKES WITH SERVO.
	PWZ 306	Washer-plain	1		
	LNZ 106	Stiffnut	1		] Quantity reduced for automatic.
	BHH 1097	Spacer	NLA		
	PWZ 206	Washer-plain	2/1		
7	CLZ 514	Pin-clevis	1		] USA-dual line BRAKES WITH SERVO.
	PWZ 105	Washer-plain	1		
8	AAA 1628	Spring-pull-off \$	1		] Quantity reduced for automatic.
9	AHH 8421	Box-master cylinder \$	1		
	BHH 1606	Box-master cylinder	1	(C)G-HN4-138401 TO 187210	] Finished at (C)G-HN5-360300 and (C)G-HD5-361000 LHD versions only.
	BHH 1091	Box-master cylinder \$	1	(C)G-HN5-187211 ON	
	BHH 1860	Box-master cylinder \$	1	(C)G-HD4-138401 TO 187840	] Except USA-dual line brakes with SERVO.
10	AHH 6163	Stiffener-box	1	(C)G-HD5-187841 ON	
	HZS 405	Screw	6	(C)G-HN5-360301 ON	] Dual line brakes with servo
	HZS 407	Screw	1	(C)G-HD5-361001 ON	
	FNZ 104	Nut	1	(LHD Versions only)	] Dual line brakes with servo
	PWZ 104	Washer-plain	7	Use prior to BHH 1860	
	LWZ 204	Washer-spring	7	(C)G-HN5-386601 ON	
	HZS 505	Screw	1		
	PWZ 105	Washer-plain	1		
	WL 600051	Washer-spring	1		

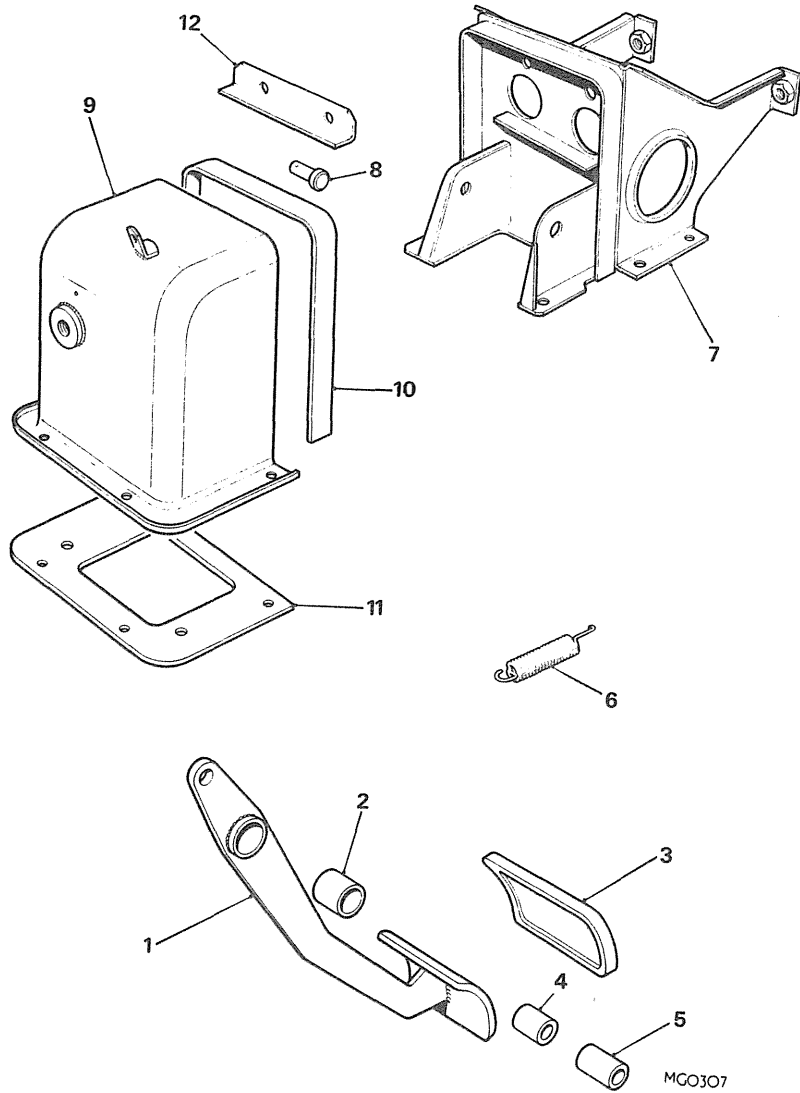
\$ This item is subject to safety regulations.



Ill. No.	Part No.	DESCRIPTION	Qty.	Change Point	REMARKS
----------	----------	-------------	------	--------------	---------

**BRAKE AND PEDAL LINKAGE-NOT V8-continued.**

11	AHH 6919	Cover-box .....	1		Use prior to AHH 8556/8899 (C)G-HN4,G-HD4- 138401 ON USA, 153878 ON Canada, (C)G-HN5-187211 ON (C)G-HD5-187841 ON Sweden and Germany. (C)G-HN5,G-HD5- 258001 ON Switzerland (C)G-HN5-360301 ON (C)G-HD5-361001 ON All other Markets
12	AHH 8556	Cover-box \$ .....	1		
13	AHH 8899	Spacer-box cover .....	1		
	PMZ 308	Screw .....	A/R		
	PMZ 312	Screw-LHD .....	1		
	LWZ 203	Washer-spring .....	4		
	PMZ 308	Screw .....	2		
	LWZ 203	Washer-spring .....	2		
	HZS 505	Screw .....	1		
	WL 600051	Washer-spring .....	1		
	HZS 405	Screw .....	1		
	LWZ 204	Washer-spring .....	1		
	HZS 403	Screw .....	2		
	LWZ 204	Washer-spring .....	2		
14	AHH 6156	Seal-master cylinder box cover .....	1		Except dual line brakes with servo.
	BHH 1108	Seal-master cylinder box cover .....	NLA		Dual line brakes with servo.
15	AHH 7052	Seal-master cylinder box cover-bottom .....	1		Use prior to BHH 1608
	BHH 1608	Seal-master cylinder box cover-bottom .....	1		(C)G-HN5-360301 ON (C)G-HD5-361001 ON
	BHH 1096	Seal-master cylinder box cover- bottom .....	NLA		Except dual line brakes with servo.  Dual line brakes with servo.



Ill. No.	Part No.	DESCRIPTION	Qty.	Change Point	REMARKS
<b>BRAKE PEDAL AND LINKAGE-V8.</b>					
1	AHH 8522	PEDAL ASSEMBLY-BRAKE \$	1		
2	AAA 4129	Bush	1		
3	AHH 5100	Pad(rubber)	1		
4	AHH 720	Tube-distance	1		
	HBZ 632	Bolt-fulcrum	1		
	PWZ 206	Washer-plain	2		
	LWZ 206	Washer-spring	1		
	FNZ 106	Nut	1		
5	AHH 6063	Spacer	1		
6	AAA 1628	Spring-pull-off	1		
7	AHH 8421	Box-master cylinder \$	1		
8	CLZ 514	Pin-clevis	1		
	PWZ 105	Washer-plain	1		
	HZS 405	Screw-box to bulkhead	6/7		
	HZS 407	Screw-inboard fixing	1		
	FNZ 104	Nut	1	(C)G-D2D1-101 TO 2100	Quantity increased at(C)G-D2D1-2101
	PWZ 104	Washer-plain	7		
	LWZ 204	Washer-spring	7		
	HZS 505	Screw	1		
	PWZ 105	Washer-plain	1		
	WL 600051	Washer-spring	1		
9	AHH 8556	Cover-master cylinder box	1		
10	AHH 6156	Seal-cover	1		
11	AHH 7052	Seal-cover bottom	1	(C)G-D2D1-101 TO 2100	
	BHH 1608	Seal-cover bottom	1	(C)G-D2D1-2101 TO 2903	
	LWZ 203	Washer-spring	4		
	PMZ 308	Screw-cover	4		
12	AHH 6163	Stiffener	1		