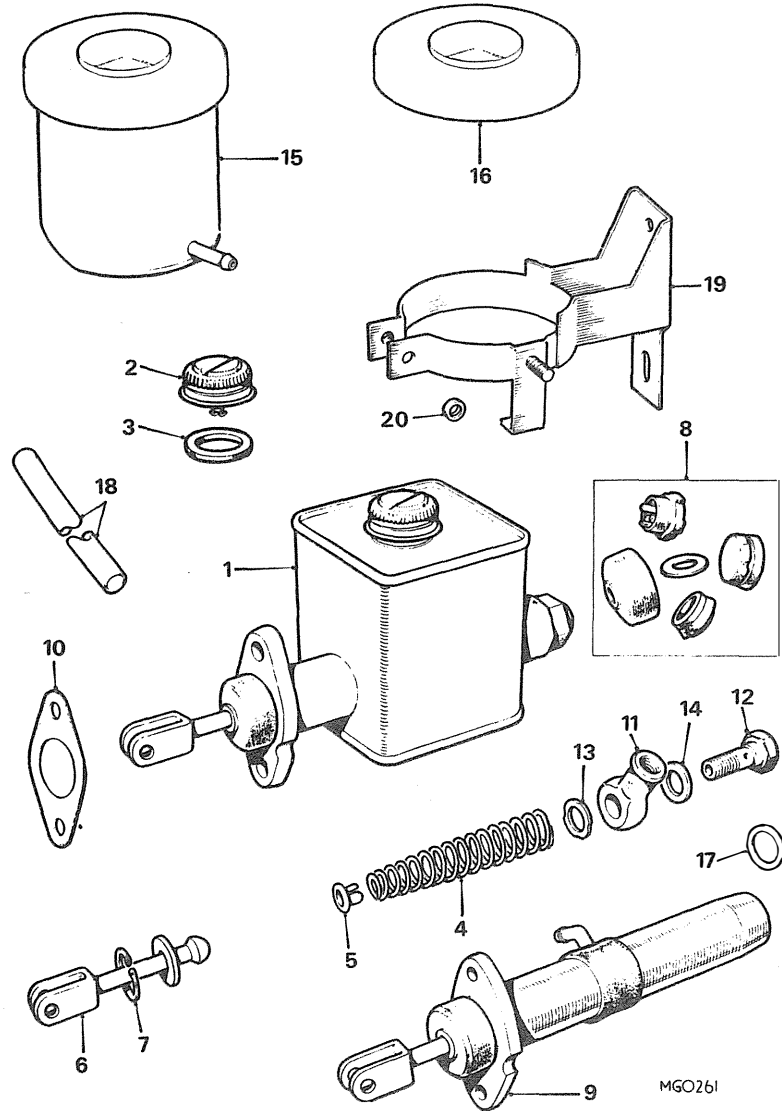
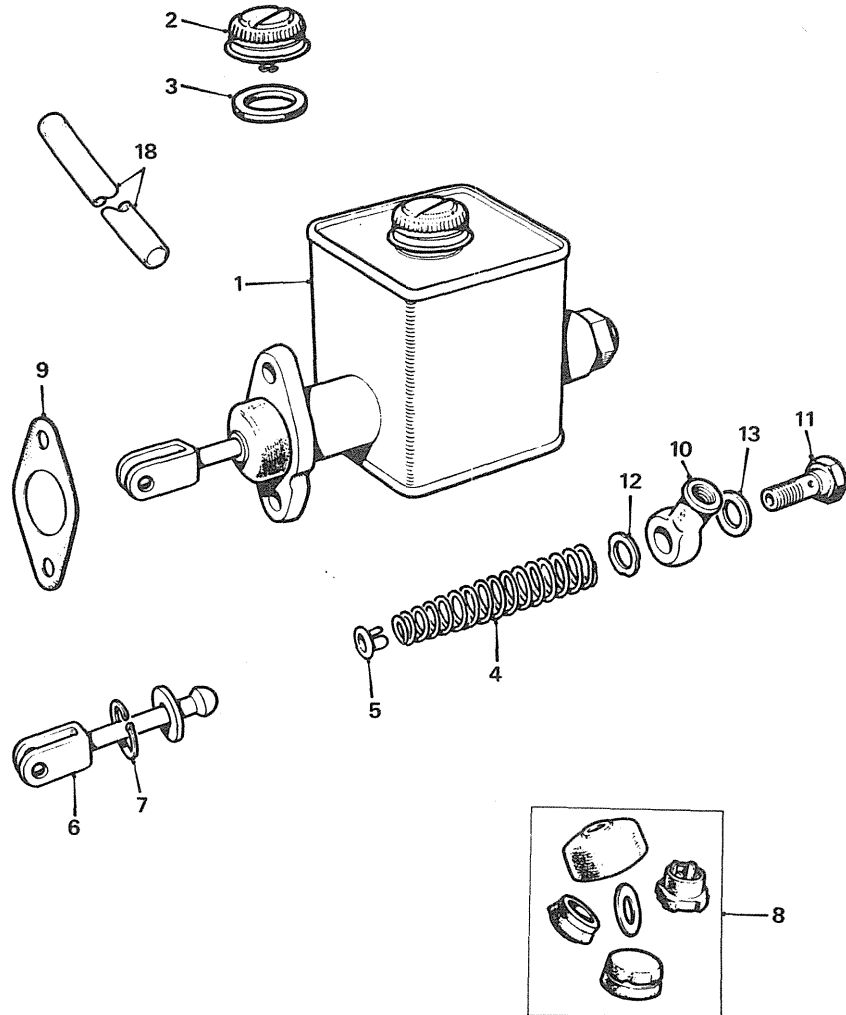


Ill. No.	Part No.	DESCRIPTION	Qty.	Change Point	REMARKS
<b>BRAKE MASTER CYLINDER-SINGLE LINE SYSTEM-NOT V8.</b>					
1	GMC 122	CYLINDER ASSEMBLY-BRAKE MASTER .....	1		(C)G-HN3,G-HD3-101 TO 138400 (C)G-HN4,G-HD4-138401 TO (+)except France and Benelux. (C)G-HN3,G-HD3-101 TO 119499 France and benelux
2	17H 6861	Cap-filler .....	1		
3	17H 7408	Seal-cap .....	1		
4	17H 7981	Spring-piston return .....	1		
5	17H 7554	Retainer-spring .....	1		
6	17H 7985	Push-rod .....	1		
7	17H 7560	Circlip .....	1		
8	8G 8258	KIT-CYLINDER REPAIR .....	1		
1	GMC 150	CYLINDER ASSEMBLY-BRAKE MASTER .....	1		Identified with Two concentric Rings
2	17H 6861	Cap-filler .....	1		
6	17H 7985	Push rod .....	1		(C)G-HN5,G-HD5(+) TO 410000 (Tourer) 410350 (GT) (Except France and Benelux)
7	17H 7560	Circlip .....	1		
9	BHA 4663	Kit-cylinder repair .....	1		
4	27H 7751	Spring-piston return .....	1		(C)G-HN3,G-HD3-119500 TO 138401 (C)G-HN4-138401 TO 187210 (C)G-HN5-187211 TO 410000 (C)G-HD4-138401 TO 187840 (C)G-HD5-187841 TO 410350
6	17H 7985	Push-rod .....	1		
7	17H 7560	Circlip .....	1		
8	8G 8258	KIT-CYLINDER REPAIR .....	1		
	HZS 507	Screw .....	1		Benelux and France.
	HZS 508	Screw .....	1		
	WL 600051	Washer-spring .....	2		
	FNZ 105	Nut .....	2		



Ill. No.	Part No.	DESCRIPTION	Qty.	Change Point	REMARKS
<b>BRAKE MASTER CYLINDER-SINGLE LINE SYSTEM-NOT V8-continued.</b>					
10	AHH 8847	Shim-brake master cylinder.....	1	(C)G-HN4-138401 TO 187210 (C)G-HN5-187211 TO 410000 (C)G-HD4-138401 TO 187840 (C)G-HD5-187841 TO 410000	
11	7H 7851	Banjo-cylinder.....	1		
12	11D 5264	Bolt-cylinder \$.....	1		
13	233220	Gasket \$.....	1		
14	3H 550	Gasket \$.....	1		
15	BHA 4810	TANK ASSEMBLY-SUPPLY-MASTER CYLINDER \$.....	1		
16	37H 2173	Cap-filler.....	1	(C)G-HN3,G-HD3-119500 TO 138400 (C)G-HN4-138401 TO 187210	Benelux and France.
17	11D 5082	Gasket-adaptor.....	1	(C)G-HN5-187211 TO 410000 (C)G-HD4-138401 TO 187840	
18	AHH 8685	Hose-supply tank to brake master cylinder(nylon) \$.....	1	(C)G-HD5-187841 TO 410000	
19	AHH 8418	Bracket-tank-Overdrive.....	1		
20	PMZ 810	Screw.....	1		
	2K 2551	Washer-DC spring.....	1		
	PMZ 310	Screw.....	2		
	LWZ 203	Washer-spring.....	2		
	PWZ 103	Washer-plain.....	2		

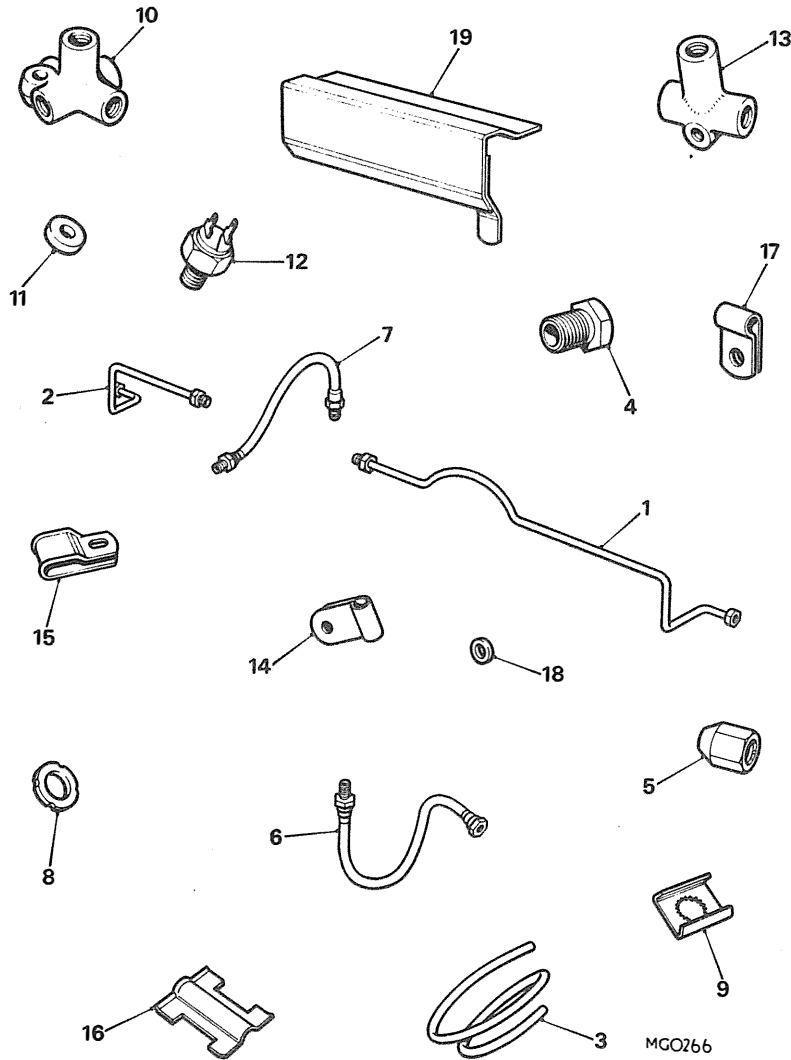
\$ This item is subject to safety regulations.



MG O305

Ill. No.	Part No.	DESCRIPTION	Qty.	Change Point	REMARKS
<b>BRAKE MASTER CYLINDER-V8.</b>					
1	GMC 122	CYLINDER ASSEMBLY-BRAKE MASTER	1		Identified with Two concentric Rings
2	17H 6861	Cap-filler	1	(C)G-D2D1-101 TO(+)	
3	17H 7408	Seal-cap	1		
4	17H 7981	Spring-piston return	1		
5	17H 7554	Retainer	1		
6	17H 7985	Push-rod	1		
7	17H 7560	Circlip	1	(C)G-D2D1 (+)TO 2903	
8	8G 8258	Kit-cylinder repair	1		
1	GMC 150	CYLINDER ASSEMBLY-BRAKE MASTER	1		
2	17H 6861	Cap-filler	1		
6	17H 7985	Push-rod	1		
7	17H 7560	Circlip	1		
	BHM 7125	Kit-cylinder repair	1		
	HZS 507	Screw	1		
	HZS 508	Screw	1		
	WL 600051	Washer-spring	2		
	FNZ 105	Nut	2		
9	AHH 8847	Shim-master cylinder	1		
10	7H 7851	Banjo-cylinder	1		
11	11D 5264	Bolt-banjo \$	1		
12	233220	Gasket \$	1		
13	3H 550	Gasket \$	1		

\$ This item is subject to safety regulations.(+)Change point not known.



III. No.	Part No.	DESCRIPTION	Qty.	Change Point	REMARKS
<b>PIPE-BRAKE</b>					
AHH 5633		Master cylinder to servo			Use pipe 37H 7147 M WITH 2 OFF NUT 3H 2249
17H 7941		101.6cm(40")-RHD	NLA		
AHH 9266		Master cylinder to servo			Use pipe 37H 7147 M WITH 2 OFF NUT 3H 2249
AHH 6344		106.7cm(42")-LHD	NLA		
AHH 6344		Servo to 5-way connection			Use pipe 37H 7147 M WITH 2 OFF NUT 3H 2249
AHH 6365		27.9cm(11")-LHD	1		
AHH 6365		Master cylinder to 4-way			Use pipe 37H 7147 M WITH 2 OFF NUT 3H 2249
AHH 6367		connection-63.5cm(25") \$	NLA		
AHH 6366		Master cylinder to 4-way			Use pipe 37H 7147 M WITH 1 OFF NUT 3H 2249 and 1 OFF NUT 11D 5050
AHH 6370		connection-117cm(46") \$	NLA		
1	21A 42	4-way connection to RH front			Use pipe 37H 7147 M with 2 off nut 3H 2249-tubed type axles only.
2	AHH 7817	hose-56cm(22") \$	NLA		
AHH 6366		4-way connection to LH front			Use pipe 37H 7147 M with 2 off nut 3H 2249-tubed type axles only.
AHH 6370		hose-130cm(51") \$	NLA		
1	21A 42	4-way connection to rear			Use pipe 37H 7147 M with 2 off nut 3H 2249-tubed type axles only.
2	AHH 7817	hose-238cm(93") \$	NLA		
AHH 6365		3-way connection to LH rear			Use pipe 37H 7147 M with 2 off nut 3H 2249-tubed type axles only.
AHH 6365		cylinder-109.5cm(43")	1		
AHH 6365		3-way connection to RH rear			Use pipe 37H 7147 M with 2 off nut 3H 2249-tubed type axles only.
AHH 6365		cylinder-43.2cm(17")	1		
AHH 6365		3-way connection to LH rear			Use pipe 37H 7147 M with 2 off nut 3H 2249-tubed type axles only.
AHH 6365		cylinder-117cm(46") \$	NLA		

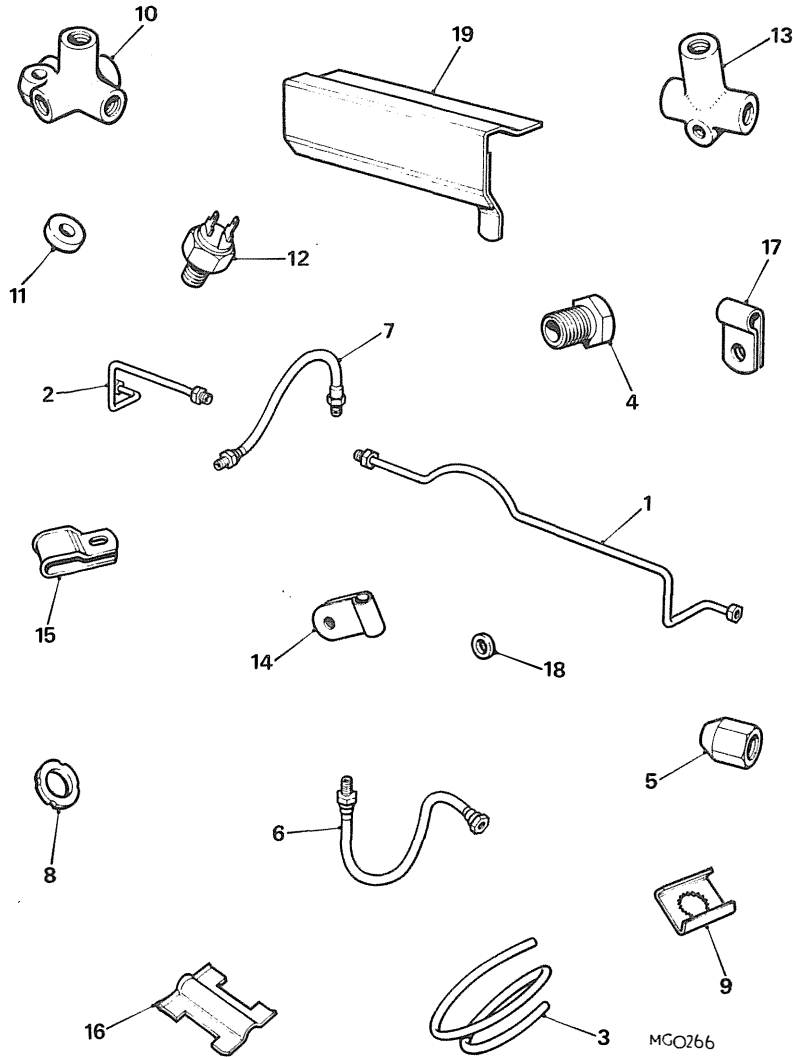
Finished at  
(C)G-HN5-360300  
(C)G-HD5-361000

Use pipe  
37H 7147 M  
WITH 2 OFF NUT  
3H 2249

Use pipe  
37H 7147 M  
WITH 2 OFF NUT  
3H 2249  
Make from pipe  
37H 7147 M  
WITH 1 OFF NUT  
3H 2249 and 1  
OFF NUT 11D  
5050

Tubed type axles  
ONLY.

Use pipe  
37H 7147 M with  
2 off nut  
3H 2249-tubed  
type axles only.

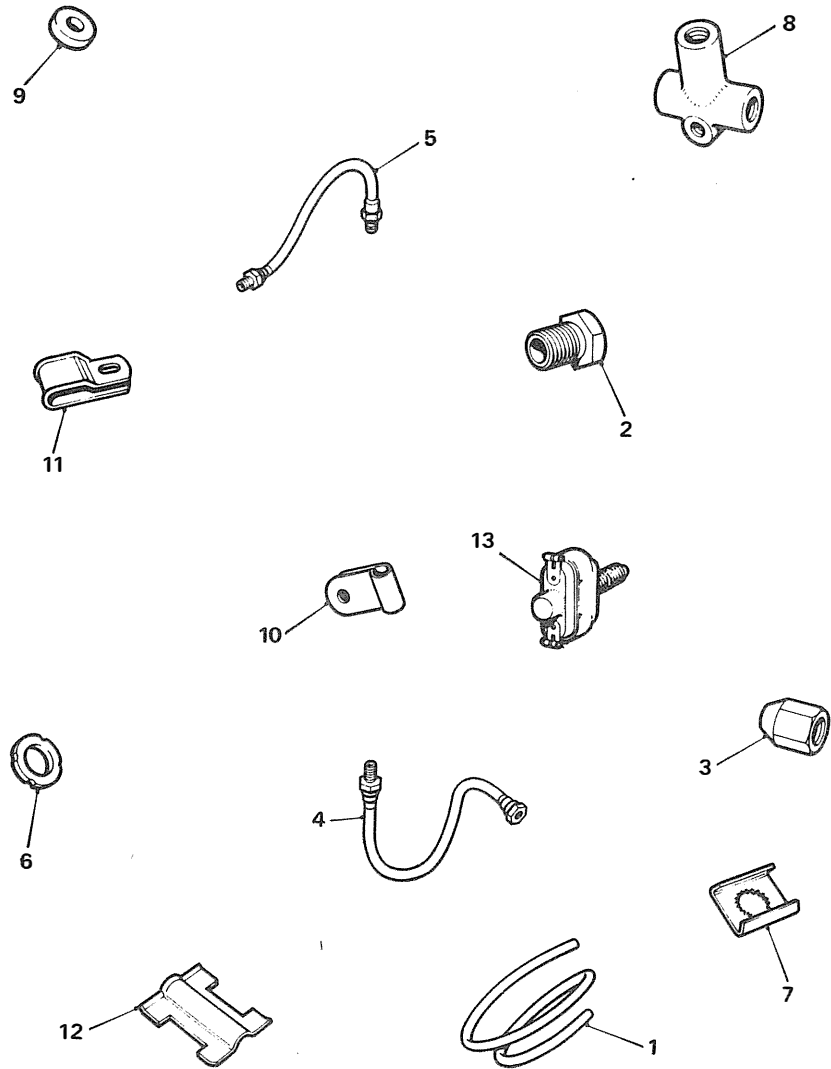


Ill. No.	Part No.	DESCRIPTION	Qty.	Change Point	REMARKS
----------	----------	-------------	------	--------------	---------

**BRAKE PIPES AND FITTINGS-SINGLE LINE SYSTEM-continued.**

3	37H 7147 M	Pipe-brake 4.762mm (.188")O/D \$	A/R		Supplied in 7 metre(25')rolls.
4	3H 2249	Tube nut-internal	A/R		
5	11D 5050	Tube-nut-external	A/R		
6	GBH 109	Hose-brake-front	NLA		Use GBH 158
7	GBH 120	Hose-brake-rear	NLA		Use GBH 159
8	233220	Gasket-hose	3		
	FNZ 206	Lock-nut	3		
9	1G 9198	Plate-locking	3		
10	17H 7108	Connection-4-way \$	1		
11	AHH 6247	Spacer	NLA		Finished at (C)G-HN5-360300 (C)G-HD5-361000
	HZS 410	Screw	1		
	LWZ 204	Washer-spring	1		
12	C 16062	Switch-stop lamp	1		
13	3H 2424	Connection-3-way	1		
	HBZ 408	Bolt	1		
	LWZ 204	Washer-spring	1		
	FNZ 104	Nut	1		
	HZS 507	Screw	1		
	LWZ 205	Washer-spring	1		
	FNZ 105	Nut	1		
14	PCR 307	Clip-pipe to front sidemember	A/R		
15	AHA 8683	Clip-pipe	NLA		
14	CHR 307	Clip-pipe to sidemember	1		
	PTZ 1003	Screw	1		
16	AHC 171	Clip-pipe to front sidemember-LHD	NLA		
17	PCR 807	Clip-pipe to bulkhead	1		Benelux and France.
	PTZ 1004	Screw	1		
	PWZ 205	Washer-plain	1		(C)G-HN3,G-HD3-101 TO 138400 (C)G-HN4-138401 TO 187210 (C)G-HN5-187211 TO 360300 (C)G-HD4-138401 TO 187840 (C)G-HD5-187841 TO 361000
	PTZ 1006	Screw	1		
18	AHA 8497	Washer-plain	1		
	LWZ 203	Washer-spring	1		
	FNZ 105	Nut-clip to differential cage	2		
	PWZ 105	Washer-plain	2		
	WL 600051	Washer-spring	2		
19	AHH 8900	Heat shield-brake pipe	1		(C)G-HN4-138401 TO 187210 (C)G-HN5-187211 TO 360300 (C)G-HD4-138401 TO 187840 (C)G-HD5-187841 TO 361000

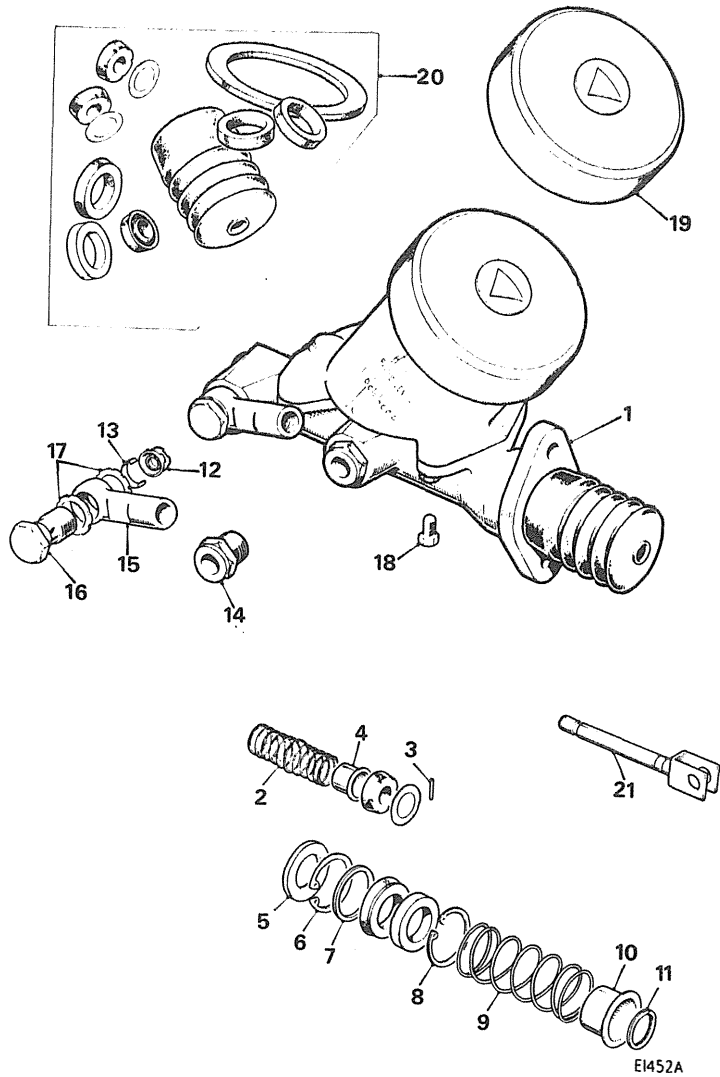
\$ This item is subject to safety regulations.



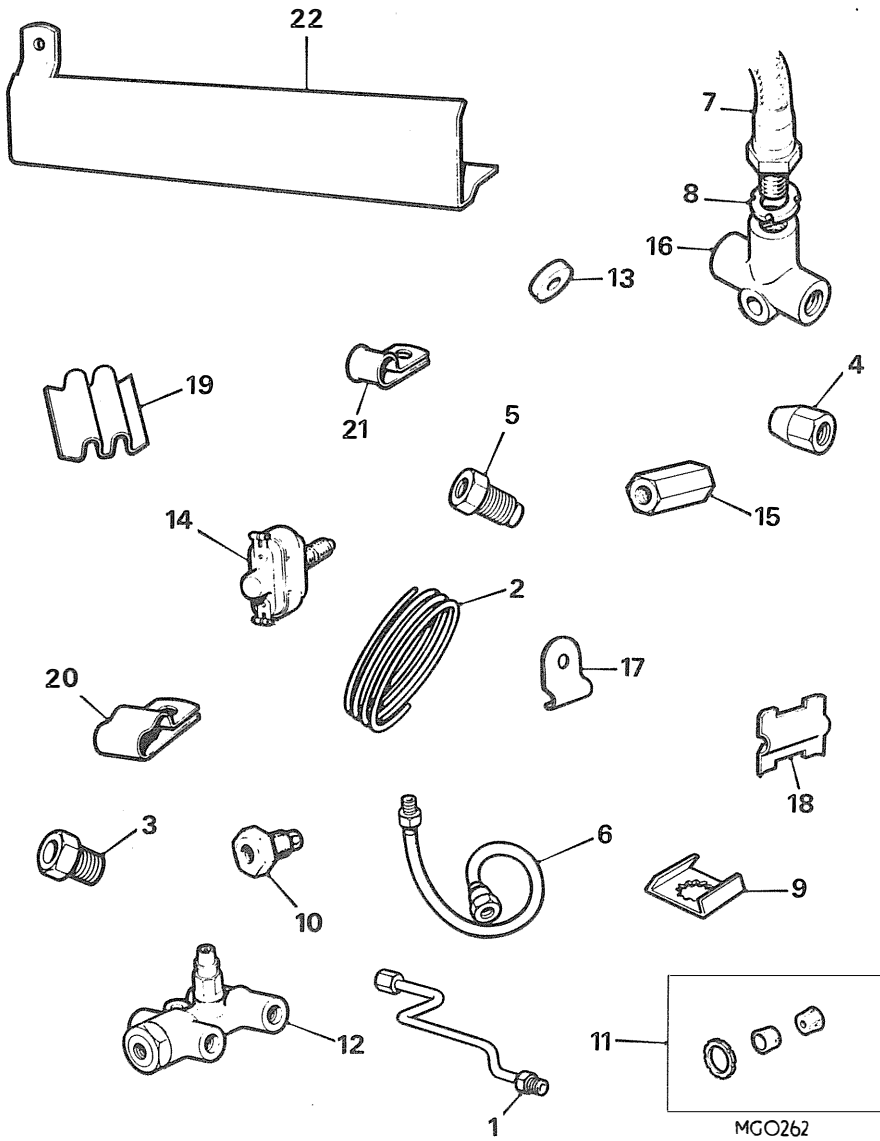
MG 0304

Ill. No.	Part No.	DESCRIPTION	Qty.	Change Point	REMARKS	
<b>BRAKE PIPES AND FITTINGS SINGLE LINE SYSTEM-continued.</b>						
		<b>PIPE-BRAKE</b>				
	NSP	Servo to 3-way-117cm(46")	NLA		Make from pipe 37H 7147 M with TUBE NUTS 3H 2249 and 11D 5050.	
	NSP	Servo to master cylinder 99.2cm(39")	NLA			
	NSP	3-way to RH front hose 78.7cm(31")	NLA			
	NSP	Servo to LH front hose 111.7cm(44")	NLA	(C)G-HN5-360301 TO 410000 (C)G-HD5-361001 TO 410000		
	NSP	3-way to connector 81.3cm(32")	NLA	(C)-D2D1-101 TO 2903		
	AHH 6370	Connector to rear brake hose-155cm(61")	NLA			
	AHH 7817	3-way to RH rear wheel cylinder 40.6cm(16")	NLA			
	AHH 6365	3-way to LH rear wheel cylinder 116.8cm(46")	NLA			
	1 37H 7147 M	Pipe-brake .25"(4.762mm)O/D \$	A/R			Supplied in 7 metre(25')rolls.
	2 3H 2249	Nut-tube-internal	A/R			Use prior to GBH 158/159 (C)G-HN5-378385 TO 394300 (C)G-HD5-378517 TO 394300 (C)G-D2D1-1720 TO 2707 (C)G-HN5,G-HD5-394301 TO 410000 (C)G-D2D1-2708 ON (C)G-HN5-378385 ON (C)G-HD5-378517 ON (C)G-D2D1-1720 ON
	3 11D 5050	Nut-tube-external	A/R			
	4 GBH 109	Hose-brake-front \$	NLA			
	5 GBH 120	Hose-brake-rear \$	NLA			
	4 GBH 158	Hose-brake-front \$	2			
	4 GBH 172	Hose-brake-front \$	2			
	5 GBH 159	Hose-brake-rear \$	1			
	6 233220	Gasket-hose	3		(C)G-HN5-360301 TO 410000 (C)G-HD5-361001 TO 410000 (C)G-D2D1-101 TO 2903	
	7 1G 9198	Plate-locking	3			
	FNZ 206	Locknut	3			
	8 3H 2424	Connector-3-way	2			
	HZS 410	Screw-front connector	1			
	9 AHH 6247	Spacer	NLA			
	HBZ 408	Bolt-rear connector	1			
	LWZ 204	Washer-spring	2			
	NH 604041	Nut	1			
	HZS 507	Screw-3-way to axle	1			
	WL 600051	Washer-spring	1			
	FNZ 105	Nut	1			
	10 PCR 307	Clip-pipe to front sidemember	A/R			
	11 AHA 8683	Clip-double	NLA			
	12 AHC 171	Clip-pipe	NLA			
	PTZ 1003	Screw-clip	1			
	PWZ 105	Washer-plain	2			
	WL 600051	Washer-spring	2			
	FNZ 105	Nut	2			
	13 BHA 4675	Switch-stop light	1			
	FNZ 206	Nut	1			

\$ This item is subject to safety regulations.

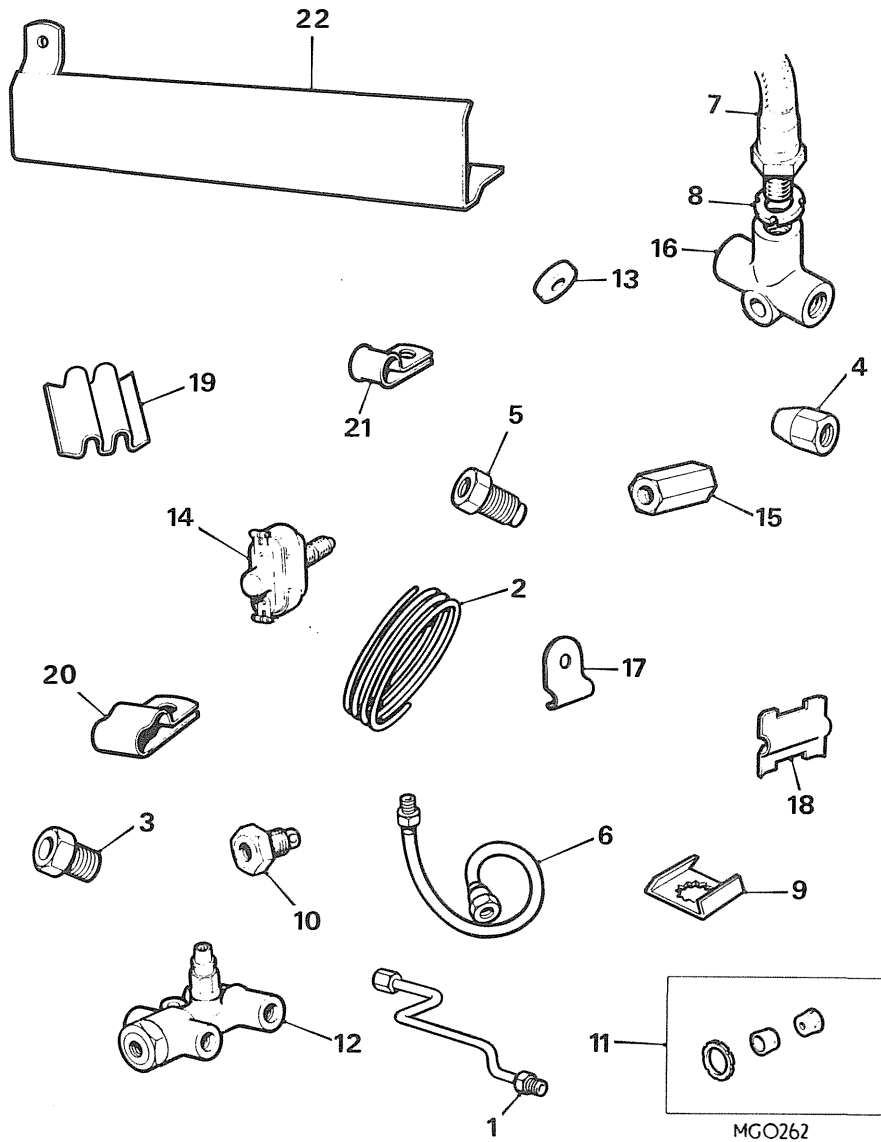


Ill. No.	Part No.	DESCRIPTION	Qty.	Change Point	REMARKS
<b>BRAKE MASTER CYLINDER-DUAL LINE SYSTEM-(LESS SERVO).</b>					
1	37H 2780	CYLINDER ASSEMBLY-BRAKE MASTER \$	1		
2	37H 2763	Spring-piston return \$	1		
3	27H 8442	Pin-piston link retaining \$	1		
4	27H 8443	Retainer-pin \$	1		
5	37H 5912	Washer-piston stop \$	1		
6	27H 8445	Circlip-retaining-stop washer \$	1		
7	27H 8446	Washer-cup support \$	1		
8	27H 8445	Circlip-bearing retaining \$	1		
9	37H 2764	Spring-primary piston return \$	1		
10	27H 8449	Retainer-spring \$	1		
11	27H 8450	Ring-security-retainer to piston \$	1		
12	27H 8453	Body-trap valve \$	1		
13	27H 8454	Clip-trap valve \$	1		
14	27H 8456	Adaptor-outlet(straight) \$	1		
15	37H 2782	Connector-outlet(angled) \$	NLA		
16	37H 2783	Bolt-banjo \$	1		
17	11D 5070	Gasket-bolt to connector and body \$	1		
18	7H 7520	Bolt-fluid tank to body \$	1		
	LWN 404	Washer-bolt	4		
19	37H 7022	Cap-filler \$	1		
20	18G 8587	KIT-REPAIR \$	1SET		
21	37H 2781	Push-rod-master cylinder \$	1		
	HZS 508	Screw	2		
	FNZ 105	Nut	2		
	WL 600051	Washer-spring	2		



Ill. No.	Part No.	DESCRIPTION	Qty.	Change Point	REMARKS
<b>PIPE-BRAKE</b>					
<b>BRAKE PIPES AND FITTINGS-DUAL LINE SYSTEM-(LESS SERVO).</b>					
AHH 8696		Master cylinder to failure switch-front outlet-58.4cm(23") \$.....	NLA		Use pipe 37H 7147 M with 1 off nut 3H 2249 and 1 off nut BHA 4706
AHA 6482		Master cylinder to failure switch-rear outlet-55.9cm(22") \$.....	NLA		
AHH 8699		Pressure failure switch to RH front brake hose-167.6cm(66") \$.....	NLA	Finished at (C)G-HN5-360300 (C)G-HD5-361001	Use pipe 37H 7147 M with 1 off nut 11D 5050 and 1 off nut
AHH 8702		Pressure failure switch to LH front brake hose-114.3cm(45") \$.....	NLA		
2A 5619		Pressure failure switch to rear pipe connection-160cm(63") \$.....	NLA		Use pipe 37H 7147 M with 2 off nut 3H 2249.

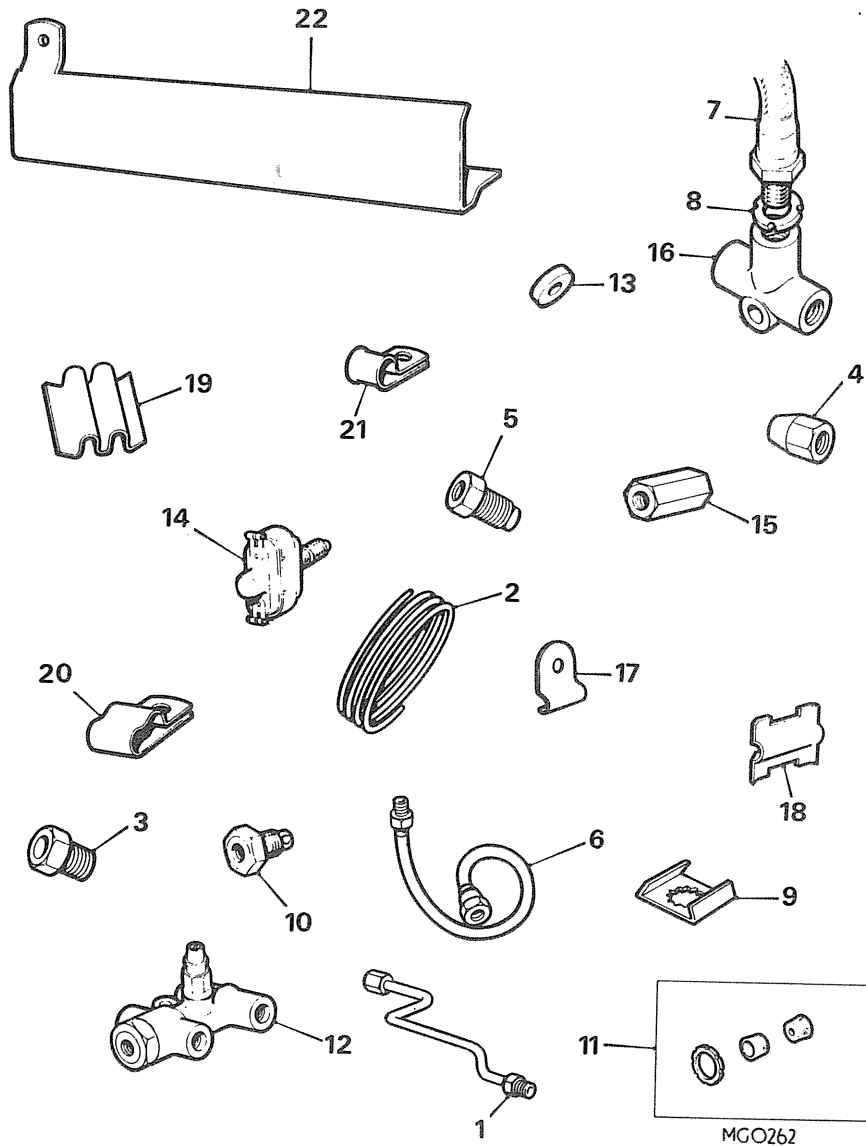




Ill. No.	Part No.	DESCRIPTION	Qty.	Change Point	REMARKS
<b>PIPE-BRAKE</b>					
37H 7147 M		Master cylinder to failure switch-rear outlet-45.7cm(18")long \$.....	1		(C)G-HN5-360301 TO 410000 (C)G-HD5-361001 TO 410000 With 2 off nut 3H 2249. With 1 off 11D 5050 and 1 OFF NUT BHA 4706
37H 7147 M		Pressure-failure switch to RH front brake-hose-236cm (93")long \$.....	1		
37H 7147 M		Pressure failure switch to LH front brake hose-78.7cm (31")long \$.....	1		
37H 7147 M		Pressure failure switch to rear tube connection 228.6cm (90")long \$.....	1		
13H 1237		Rear pipe connection to rear brake hose-155cm(61") \$.....	NLA		With 2 off nut 3H 2249.
AHH 6365		3-Way connection to LH rear cylinder-117cm(46") \$.....	NLA		Use pipe 37H 7147 M with 1 off nut 3H 2249 and 1 off nut 11D 5050.
1 AHH 7817		3-Way connection to RH rear cylinder-43.2cm(17") \$.....	1		Use pipe 37H 7147 M with 2 off nut 3H 2249.
2	37H 7147 M	Pipe-brake 4.762mm(.188")O/D \$.....	A/R		Supplied in 7 metre(25')rolls.
3	3H 2249	Tube nut-internal	A/R		
4	11D 5050	Tube nut-external	A/R		
5	BHA 4706	Tube nut-internal	A/R		

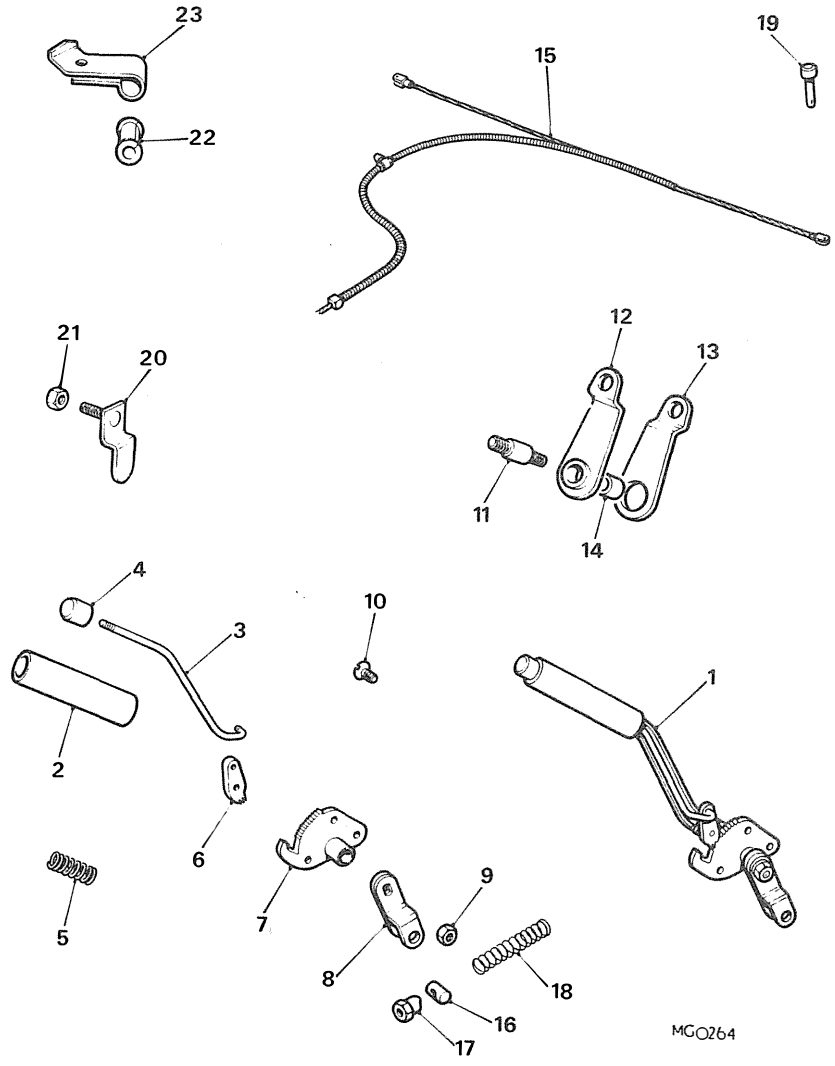
MGO262

\$ This item is subject to safety regulations.



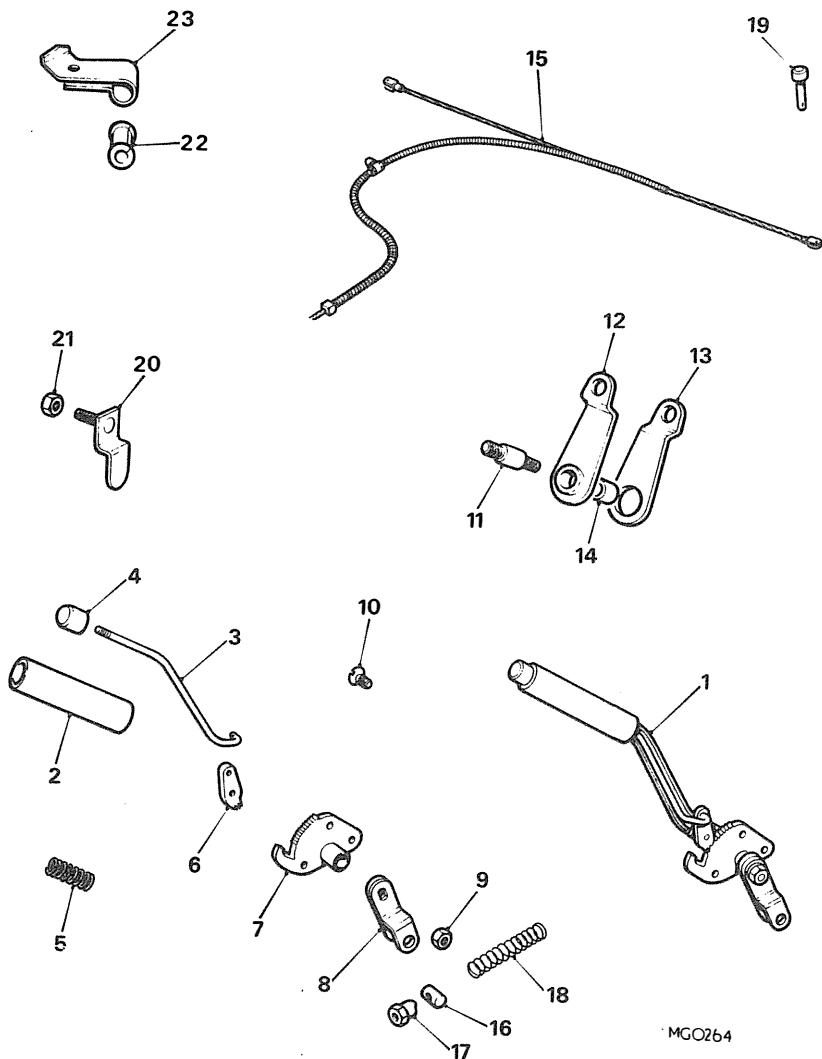
Ill. No.	Part No.	DESCRIPTION	Qty.	Change Point	REMARKS
<b>BRAKE PIPES AND FITTINGS-DUAL LINE SYSTEM-LESS SERVO-continued.</b>					
6	GBH 109	Hose-front brake \$	NLA		Use prior to GBH 158/GBH 159 (C)G-HN5-378385 TO 391932 (C)G-HD5-378517 TO 391932 (C)G-HN5,G-HD5-391933 ON (C)G-HN5-378385 ON (C)G-HD5-378517 ON
7	GBH 120	Hose-rear brake \$	1		
6	GBH 158	Hose-front brake	2		
6	GBH 172	Hose-front brake \$	2		
7	GBH 159	Hose-rear brake	1		
8	233220	Gasket-hose \$	3		
	FNZ 206	Locknut	3		
9	1G 9198	Plate-locking	3		
	13H 4956	SWITCH ASSEMBLY-PRESSURE FAILURE \$	NLA		Use 13H 5905 (C)G-HN4,G-HD4-138401 TO 167815
10	37H 2542	Cap-end \$	1		
11	18G 8353	Kit-repair \$	1		(C)G-HN4,G-HD4-167816 TO 187210 (Tourer), 187840 (GT)(C)G-HN5-187211 TO 386600 (Except USA/Canada) (C)G-HD5-187841 TO 386600(Except USA/Canada) (C)G-AN5-187211 TO 360301(USA/Canada) (C)G-HD5-187841 TO 367803(USA/Canada)
12	13H 5905	SWITCH ASSEMBLY-PRESSURE FAILURE \$	1		
11	18G 8700	Kit-repair \$	1		
AAU 2583		Switch-pressure-failure (with latching valve)	1		(C)G-HN5,G-HD5 386601 ON
13	AHH 6247	Spacer	NLA		
	HZS 410	Screw	1		
	LWZ 204	Washer-spring	1		
14	BHA 4675	Switch-stop lamp \$	1		
	FNZ 206	Nut	1		
15	BCA 4002	Connection-rear brake pipe \$	1		
16	3H 2424	Connection-3 way	NLA		
	HBZ 408	Bolt	NLA		
	LWZ 204	Washer-spring	1		
	FNZ 104	Nut	1		
17	PCR 307	Clip-pipe to side-member	2		
18	AHC 171	Clip-pipe to side-member	NLA		
19	AHH 8736	Clip-pipe to bulkhead	2		
20	AHH 8897	Clip-pipe(dual)to bulkhead	1		
21	PCR 407	Clip-pressure switch leads to bulkheads	1		
	PTZ 1003	Screw	1		
	FNZ 105	Nut	2		
	PWZ 105	Washer-plain	2		
	WL 600051	Washer-spring	2		
22	AHH 8900	Shield-heat-brake pipe	1		

\$ This item is subject to safety regulations

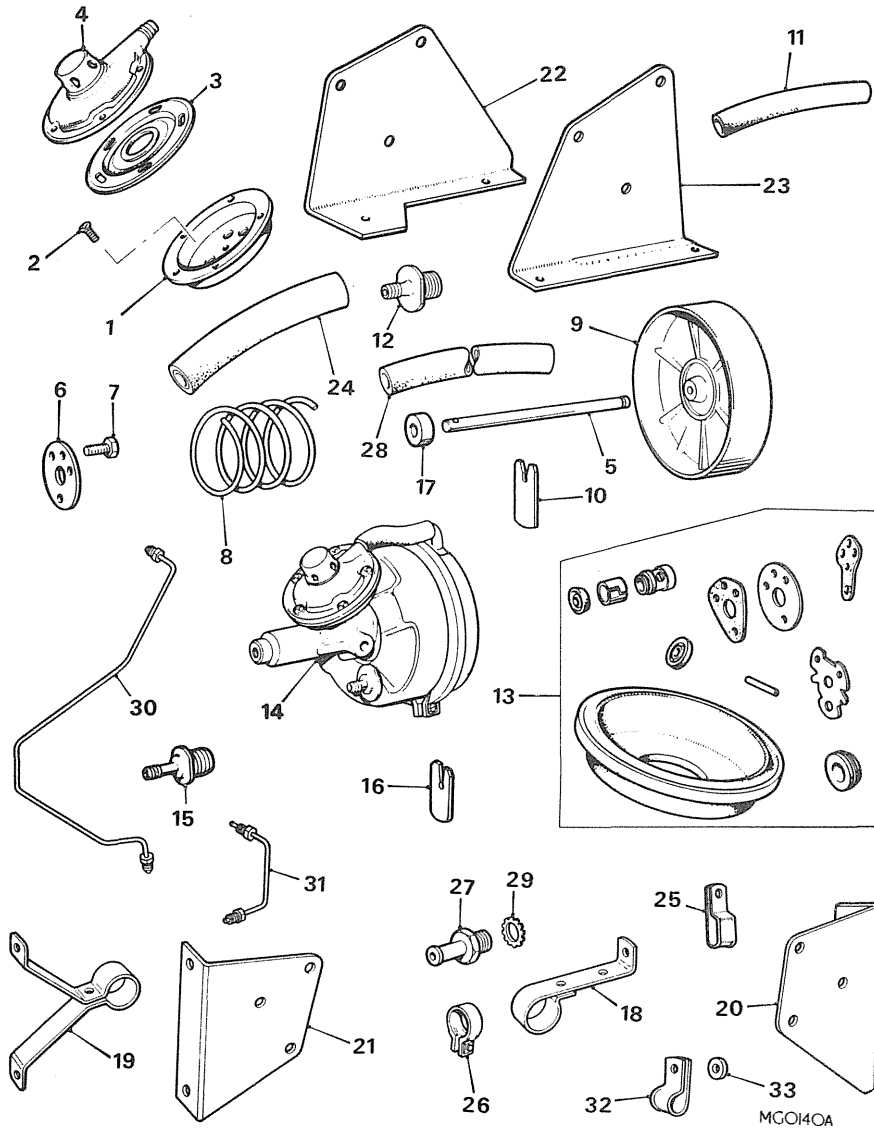


Ill. No.	Part No.	DESCRIPTION	Qty.	Change Point	REMARKS
<b>HANDBRAKE MECHANISM</b>					
1	AHC 546	HANDBRAKE ASSEMBLY \$ .....	1		
1	BHH 538	HANDBRAKE ASSEMBLY \$ .....	1		Use prior to BHH 538 (C)G-HN5,G-HD5-258001 TO 360300 (Tourer)361500(GT) (C)G-D2D1-101 TO 2100
	BHH 1377	HANDBRAKE ASSEMBLY \$ .....	1		(C)G-HN5-360301 TO 386600 (C)G-HD5-361001 TO 386600 (C)G-D2D1-2101 TO 2700
	BHH 1923	HANDBRAKE ASSEMBLY \$ .....	1		(C)G-HN5,G-HD5-386601 ON (C)G-D2D1-2701 ON
2	AHH 6228	Grip-handle \$ .....	1		
3	AHC 548	Rod-pawl \$ .....	1		
4	AHH 6231	Knob-rod \$ .....	1		
5	AHC 549	Spring-rod \$ .....	1		
6	AHH 6232	Pawl \$ .....	1		
	PWZ 104	Washer-plain.....	1		
7	AHH 6233	Plate-ratchet and stop \$.....	1		Use prior to BHH 1928
	BHH 1928	Plate-ratchet c/w stop and handbrake switch bracket.....	1		(C)G-HN5,G-HD5-386601 ON (C)G-D2D1-2701 ON
8	AHH 6235	Lever-operating-hand brake \$ .....	1		Use prior to BHH 1469
	BHH 1469	Lever-operating-handbrake \$ .....	1		(C)G-HN5-360301 ON (C)G-HD5-361001 ON
9	53K 1663	Locknut.....	1		
	AAU 2492	Switch and leads-LHD.....	1		(C)G-HN5,G-HD5-386601 ON
	WA 110061	Washer-plain.....	1		
10	88G 295	Screw-hand brake to gearbox cover \$ .....	3		
11	AHH 5025	Fulcrum-hand brake compensator \$.....	1		
	LNZ 106	Nut .....	1		
	LNZ 105	Nut .....	1		
	PWZ 205	Washer-plain.....	1		
12	AHH 5203	Lever-compensating-inner \$ .....	1		
13	ACH 5101	Lever-compensating-outer \$ .....	1		
14	AHH 5225	Bush-lever \$ .....	1		
	AWZ 107	Washer-anti-rattle .....	1		(C)G-HN3,G-HD3-101 TO 90624
	PWZ 107	Washer-plain.....	2		
	HZS 405	Screw .....	1		
	LWZ 204	Washer-spring .....	1		
	FNZ 104	Nut .....	1		

\$ This item is subject to safety regulations



Ill. No.	Part No.	DESCRIPTION	Qty.	Change Point	REMARKS
<b>HAND BRAKE MECHANISM-continued</b>					
<b>CABLE-HAND BRAKE</b>					
15	AHH 5227	Disc wheels.....	1	] (C)G-HN3-101 TO 132922 FITTED intermittently from 123715	] Use with banjo TYPE AXLE
15	AHH 5228	Wire wheels.....	1		
15	AHH 7391	Disc wheels.....	1	] (C)G-HN3-132923 TO 138400 FITTED intermittently from 123715	] Use with tubed type axle
15	AHH 7392	Wire wheels.....	1		
15	AHH 8450	Disc wheels \$ .....	1	] (C)G-HD3-71933 TO 138400	] Use with tubed type axle
15	AHH 8451	Wire wheels \$ .....	1		
BHH 1470		Disc wheels \$ .....	1	] (C)G-HN4-138401 TO 187210	] Use with tubed type axle
BHH 1471		Wire wheels \$ .....	1		
16	AHH 5322	Trunnion-cable \$ .....	1	] (C)G-HN5-187211 TO 360300	] Use with tubed type axle
17	ACH 5104	Nut-adjuster \$ .....	1		
18	ACH 8508	Spring-cable \$ .....	1	] (C)G-HD4-138401 TO 187840	] Use with tubed type axle
	PWZ 104	Washer-plain.....	1		
	PWZ 204	Washer-plain.....	1	] (C)G-HD5-187841 TO 361001	] Use with tubed type axle
19	ACB 87 15	Pin-clevis \$ .....	2		
	FNZ 105	Nut-abutment .....	1	] (C)G-D2D1-101 TO 2100	] Use with tubed type axle
	WL 60005 1	Washer-spring .....	1		
20	AHH 6236	Clamp-cable \$ .....	NLA	] (C)G-HN5-360301 ON (C)G-HD5-361001 ON (C)G-D2D1-2101 ON	] Use with tubed type axle
21	53K 1420	Nut-clamp .....	1		
21	LNZ 203	Nut-clamp .....	1	(C)G-HN3,G-HD3- 101 TO 138400 (C)G-HN4-138401 TO 187210 (C)G-HN5-187211 ON (C)G-HD4-138401 TO 187840 (C)G-HD5-187841 ON (C)G-D2D1-101 ON	
22	ACH 8529	Ferrule-cable \$ .....	1		
23	AHH 6237	Clip-cable.....	1		
	HZS 405	Screw .....	1		
	PWZ 104	Washer-plain.....	1		
	LWZ 204	Washer-spring .....	1		
	FNZ 104	Nut .....	1		



MCOI40A

Ill. No.	Part No.	DESCRIPTION	Qty.	Change Point	REMARKS
----------	----------	-------------	------	--------------	---------

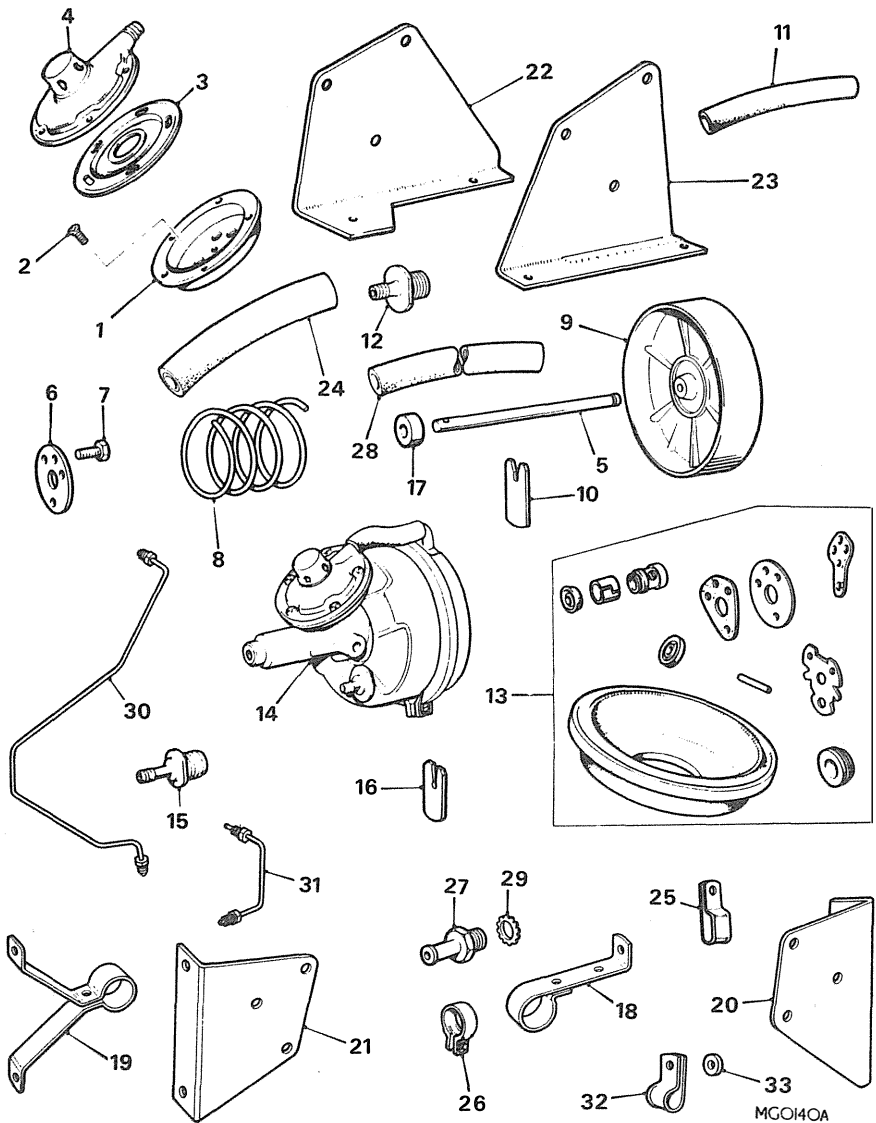
**SERVO SYSTEM-NOT FOR USE WITH DUAL LINE BRAKING OR V8**

OPTIONAL EXTRA, FINISHED FOR  
UK AT (C)G-HN5-328100,  
G-HD5-328800

	BHA 4842	SERVO ASSEMBLY-VACUUM.....	NLA		Use BHA 5076
1	27H 9309	Housing-lower-air control valve.....	1		
2	37H 3251	Screw-housing to body.....	3		Use prior to BHA 5076
3	27H 9311	Diaphragm-air control valve.....	1		
4	37H 3812	Cover-air control valve.....	1		
5	27H 9314	Push-rod.....	1		
6	27H 9317	Plate-abutment.....	1		
7	27H 9318	Screw-shell to body.....	3		
8	27H 9319	Spring-vacuum piston return.....	1		
9	37H 3813	Piston-vacuum.....	NLA		
10	27H 2929	Key-piston to push-rod.....	NLA		
11	27H 9321	Pipe-valve cover to end cover.....	1		
12	37H 4896	Valve-non-return.....	1		
13	18G 8579	KIT-SERVO REPAIR.....	1		
14	BHA 5076	SERVO ASSEMBLY-VACUUM \$.....	1		
4	37H 3812	Cover.....	1		
15	37H 4896	Valve-non-return.....	1		
16	27H 2929	Key.....	NLA		
5	27H 9314	Push-rod.....	1		
17	27H 9316	Bearing.....	1		
6	27H 9317	Plate-abutment.....	1		
7	27H 9318	Screw-shell to body.....	3		
8	27H 9319	Spring-return.....	1		
9	37H 3813	Piston-vacuum.....	NLA		
1	27H 9309	Housing-lower.....	1		
3	27H 9311	Diaphragm-air control valve.....	1		
11	27H 9321	Pipe.....	1		
2	37H 3251	Screw.....	3		

(C)G-HN5-220129  
TO 410000  
(C)G-HD5-219491 TO  
410000

\$ This item is subject to safety regulations



Ill. No.	Part No.	DESCRIPTION	Qty.	Change Point	REMARKS
----------	----------	-------------	------	--------------	---------

**SERVO SYSTEM-NOT FOR USE WITH DUAL LINE BRAKING OR V8-continued**

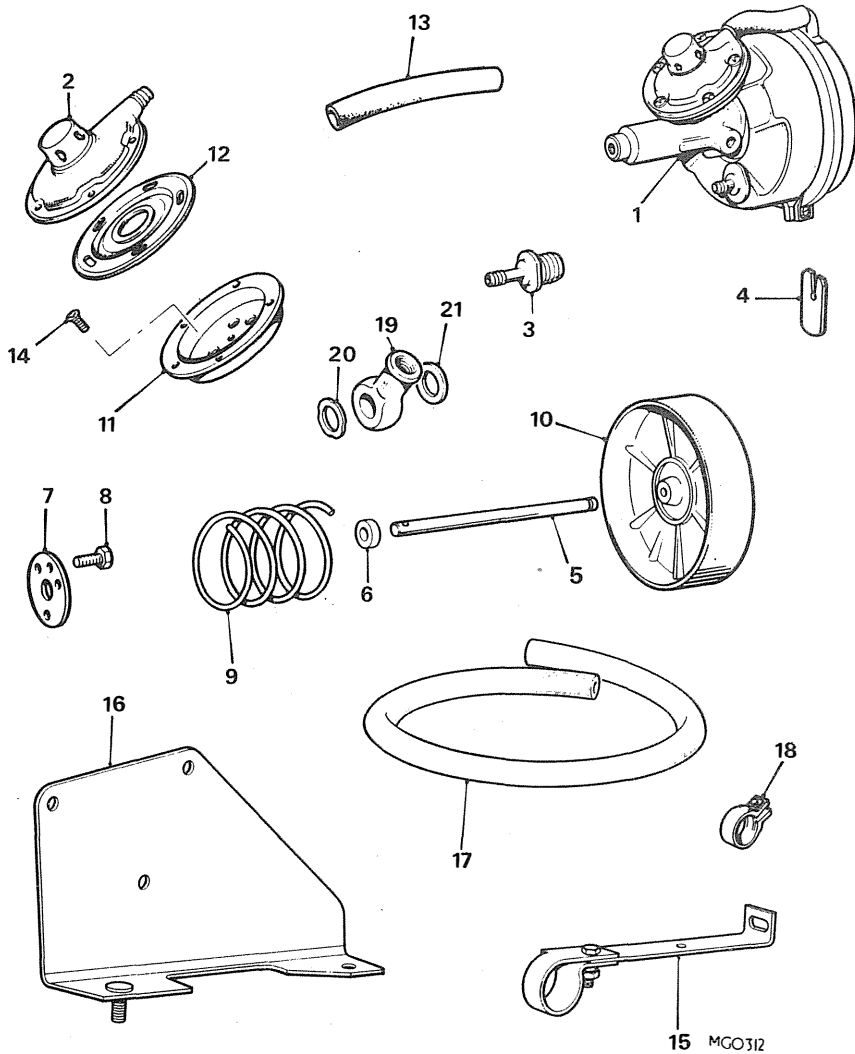
<b>BRACKET-SERVO</b>					
18	AHH 9146	Front-RHD .....	1		Use prior to BHH 1149
19	AHH 9260	Front-LHD .....	1		] Use prior to BHH 544 and 545 Use prior to BHH 1148
20	AHH 9147	Rear-RHD .....	NLA		
21	AHH 9261	Rear-LHD .....	1		
22	BHH 544	Rear-RHD .....	1		
23	BHH 545	Rear-LHD .....	1		] (C)G-HN5,G-HD5 -258001 TO 410000
	PWZ 204	Washer-plain .....	2		
	LNZ 104	Nut .....	2		] (C)G-HN5-327738 TO 410000 (C)G-HD5- 328821 TO 410000
	HZS 506	Screw-RHD .....	1		
24	21A 2255	Hose-servo-RHD .....	1		
	BHH 1149	Bracket-servo-RHD .....	1		
	BHH 1148	Bracket-servo-RHD .....	1		
25	AHA 8683	Clip-double-RHD .....	NLA		
26	AHC 234	Clip-hose to adaptor .....	NLA		
27	BHA 5044	Adaptor-manifold .....	1		
28	BHA 5039	Hose-brake servo-33"(838mm) .....	1		
	HZS 405	Screw-servo bracket .....	1		
	SH 604061	Screw-fixing .....	A/R		
	PWZ 104	Washer-plain .....	1		
	LWZ 204	Washer-spring .....	1		
	FNZ 104	Nut .....	1		
	WL 600051	Washer-spring .....	3		
	FNZ 105	Nut-servo to bracket .....	3		
32	PCR 1007	Clip-hose to bracket .....	NLA		Use prior to PCR 1207 (C)G-HN5,G-HD5- 258001 TO 410000
32	PCR 1207	Clip-hose to bracket .....	1		
	PMZ 310	Screw .....	1		
	LWZ 203	Washer-spring .....	1		
	PMZ 307	Screw-clip-pipe clamping .....	1		
	PWZ 103	Washer-plain .....	1		
	LWZ 203	Washer-spring .....	1		
32	PCR 1007	Clip-hose to heater motor flange .....	NLA		
33	AHC 735	Spacer .....	NLA		
	PMZ 316	Screw .....	1		
	PWZ 203	Washer-plain .....	1		
	LWZ 203	Washer-spring .....	1		

Use with BHH 1148 and 1149 brackets.

\$ This item is subject to safety regulations

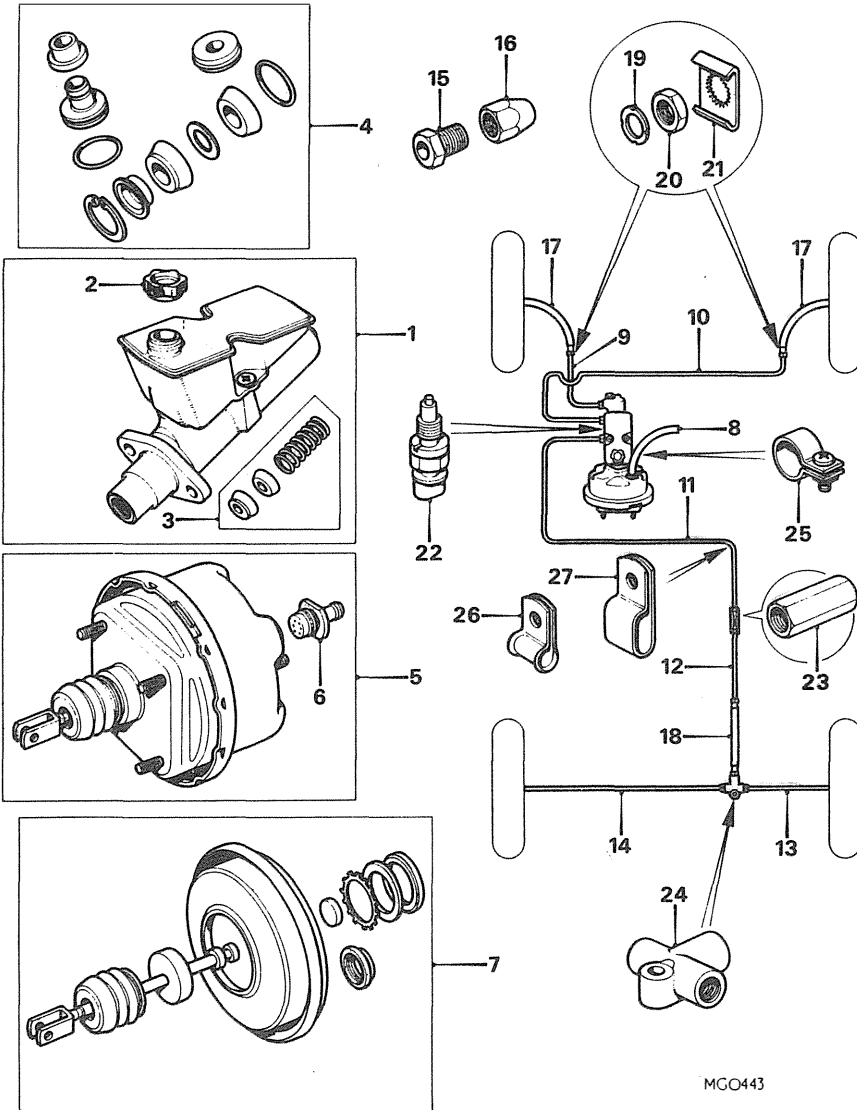
Ill. No. | Part No. | ||||| DESCRIPTION | Qty. | Change Point | REMARKS

**SERVO SYSTEM RHD AND V8**



1	BHA 5076	SERVO ASSEMBLY \$.....	1		
2	37H 3812	Cover.....	1		
3	37H 4896	Valve-non-return.....	1		
4	27H 2929	Key.....	NLA		
5	27H 9314	Push-rod.....	1		
6	27H 9316	Bearing.....	1		
7	27H 9317	Plate-abutment.....	1		
8	27H 9318	Screw-shell to body.....	3		
9	27H 9319	Spring-return.....	1		
10	37H 3813	Piston-vacuum.....	NLA		
11	27H 9309	Housing-lower.....	1		
12	27H 9311	Diaphragm-air control valve.....	1		
13	27H 9321	Pipe.....	1		
14	37H 3251	Screw.....	3		
15	BHH 1149	BRACKET ASSEMBLY.....	1		
	SH 604061	Screw.....	1		
	PWZ 104	Washer-plain.....	1		
	LWZ 204	Washer-spring.....	1		(C)G-HN5-328101 TO 410000
	NH 604041	Nut.....	1		(C)G-HN5-328801 TO 410350
	PMZ 310	Screw-bracket.....	1		(C)G-D2D1-101 TO 2903
	PWZ 103	Washer-plain.....	1		
	LWZ 203	Washer-spring.....	1		
	ANZ 103	Nut.....	1		
16	BHH 1148	Bracket-rear.....	1		
	WL 600051	Washer-spring.....	1		
	PWZ 105	Washer-plain.....	1		
	HZS 506	Screw.....	1		
	21A 2255	Hose-vacuum.....	1		] Not V8
	BHA 5044	Adaptor-manifold.....	1		
17	BHA 5039	Hose-vacuum.....	1		] Not V8
18	AHC 234	Clip-hose.....	NLA		
	PMZ 316	Screw-hose to bulkhead.....	1		
	PWZ 203	Washer-plain.....	1		
	WL 700101	Washer-spring.....	1		
	AHC 735	Piece-distance.....	NLA		
19	7H 7851	Banjo.....	1		
20	233220	Gasket.....	1		
21	3H 550	Gasket.....	1		
	FNZ 105	Nut-servo to rear bracket.....	3		
	WL 600051	Washer-spring.....	3		
	HZS 406	Screw-rear servo bracket to bulkhead.....	1		
	PWZ 204	Washer-plain.....	2		
	LNZ 104	Nut.....	2		

\$ This item is subject to safety regulations

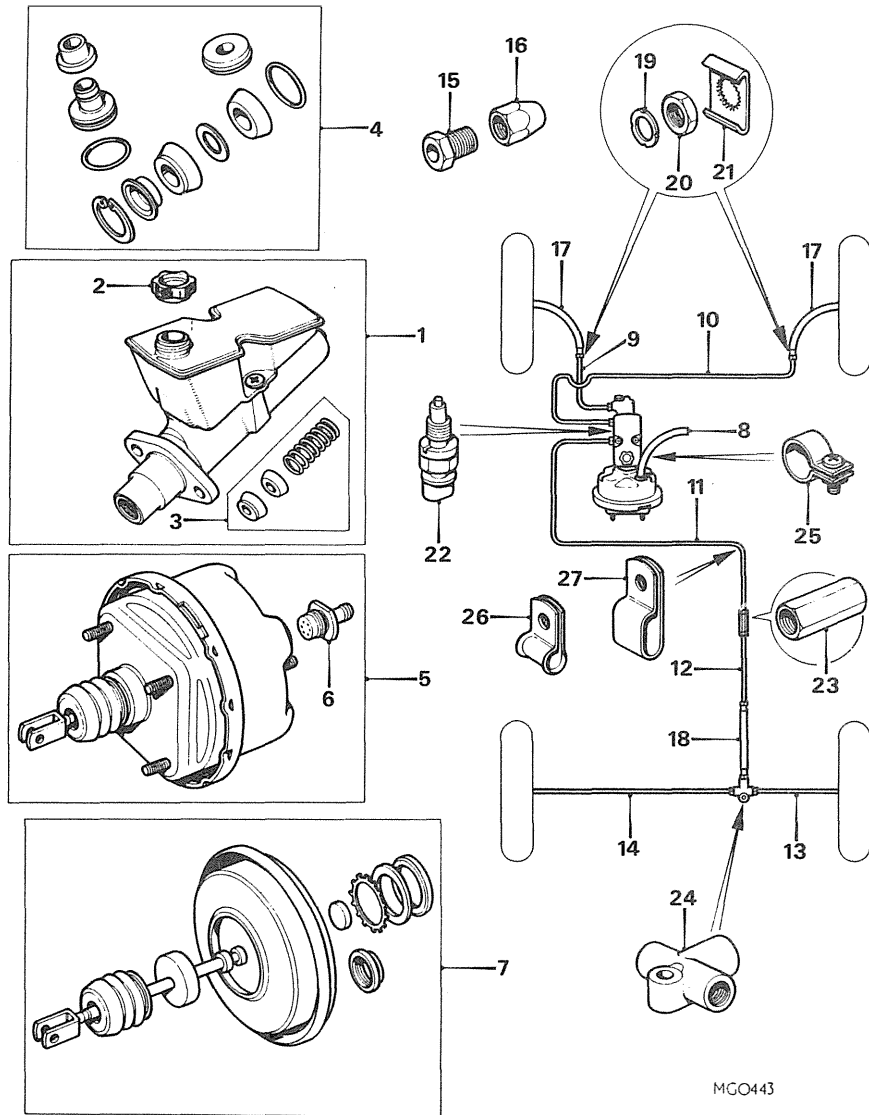


MGO443

Ill. No.	Part No.	DESCRIPTION	Qty.	Change Point	REMARKS
<b>SERVO SYSTEM-DUAL LINE BRAKES.</b>					
1	37H 8093	CYLINDER ASSEMBLY-BRAKE MASTER	1		Use prior to GMC 149
	GMC 149	CYLINDER ASSEMBLY-BRAKE MASTER \$	1		(C)G-HN5-386601 TO 410000
2	17H 6861	Cap-filler	1		Use prior to AAU 3332
3	37H 8088	Piston spring and seals	1		(C)G-HN5-386601 TO 410000
	AAU 3332	Piston spring and seals \$	1		Finished at (C)G-HN6-386600
	AAU 1752	Switch-pressure failure	1		
4	18G 9081	Kit repair	1		
	WL 600051	Washer-spring	4		
	WA 108051	Washer-plain	4		
	NH 605041	Nut	4		
5	37H 8089	SERVO ASSEMBLY	1		Use prior to AAU 3333
	AAU 3333	SERVO ASSEMBLY \$	1		(C)G-HN5-386601 TO 410000
6	37H 4896	Valve-non return	1		
7	18G 9080	Kit repair	1		
	NH 605041	Nut	2		
	WL 600051	Washer	2		
8	BHH 1182	Hose-vacuum	1		
9	37H 7147 M	Master cylinder to LH front hose 38"(965mm)long \$	1		] With 1 off nut 11D 5050 and 1 OFF NUT BHA 5234.
10	37H 7147 M	Master cylinder to RH front hose 92"(2337mm)long \$	1		
11	37H 7147 M	Master cylinder to rear pipe connection 97"(2464mm)long \$	1		With 1 off nut 3H 2249 and 1 off nut BHA 5234.
12	37H 7147 M	Tube connection to rear brake hose 61"(1549mm)long \$	1		With 1 off nut 3H 2249 and 1 off nut BHA 5050.
13	37H 7147 M	Rear axle 3 way to RH rear wheel cylinder 16"(406mm)long \$	1		With 2 off nut 3H 2249.
14	37H 7147 M	Rear axle 3 way to LH rear wheel cylinder 46"(1168mm)long \$	1		With 2 off nut 3H 2249.
	37H 7147 M	Pipe-brake-4.762mm(.188")O/D \$	A/R		Supplied in 7 metre(25')rolls.
15	11D 5050	Tube-nut-external	A/R		
16	BHA 5234	Tube-nut-internal	A/R		
16	3H 2249	Tube-nut-internal	A/R		

\$ This item is subject to safety regulations.





Ill. No.	Part No.	DESCRIPTION	Qty.	Change Point	REMARKS
<b>SERVO SYSTEM-DUAL LINE BRAKES-continued.</b>					
17	GBH 109	Hose-front brake \$	NLA		Use prior to GBH 158/GBH 159 (C)G-HN5-378385 TO 392005 (C)G-HN5-392006 TO 410000 (C)G-HN5-378385 TO 410000
18	GBH 120	Hose-rear brake \$	1		
17	GBH 158	Hose-front brake \$	2		
17	GBH 172	Hose-front brake \$	2		
18	GBH 159	Hose-rear brake \$	1		
19	233220	Gasket-hose \$	3		
20	FNZ 206	Locknut	3		
21	1G 9198	Plate-locking	3		
22	BHA 4675	Switch-stop lamp \$	1		
20	FNZ 206	Locknut	1		
23	BCA 4002	Connection-rear brake pipe \$	1		
24	3H 2424	Connection-3-way	1		
	HZS 408	Screw-3 way to bracket	1		
	WL 600041	Washer-spring	1		
	FNZ 104	Nut	1		
	HZS 507	Screw-3 way bracket	1		
	WL 600051	Washer-spring	1		
	FNZ 105	Nut	1		
25	AHC 234	Clip-vacuum hose-servo end	NLA		
25	GHC 507	Clip-vacuum hose-manifold end	1		
26	PCR 307	Clip	A/R		
27	AHA 8683	Clip-double	NLA		
	PMZ 306	Screw	1		
	LWZ 203	Washer-spring	1		
	ANZ 103	Nut	1		
	CLZ 514	Pin-clevis-push rod fork	1		
	WA 108051	Washer-plain	1		

MGO443

\$ This item is subject to safety regulations.